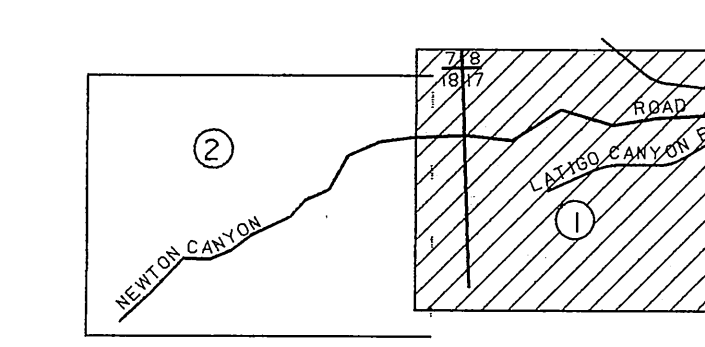
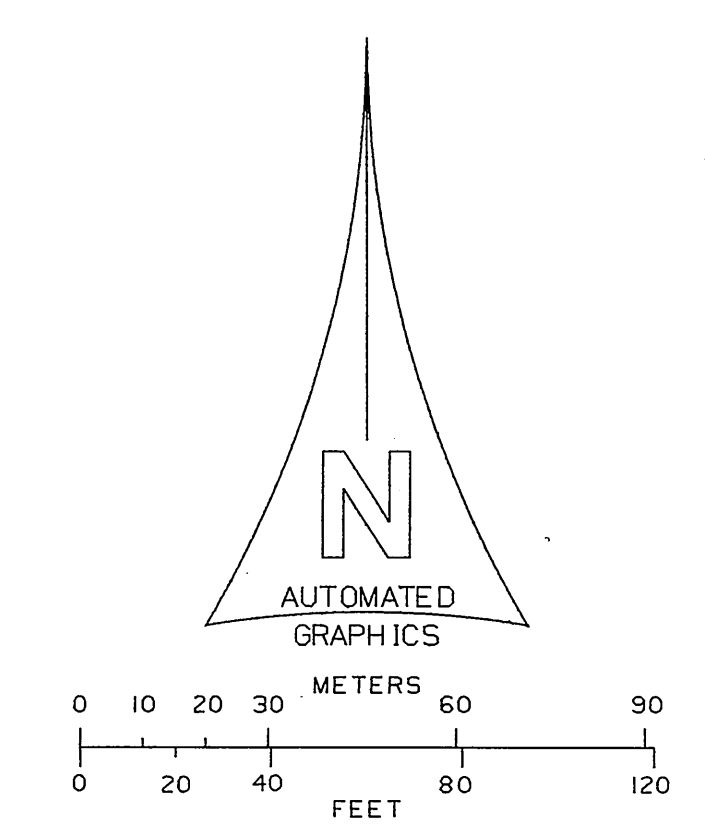
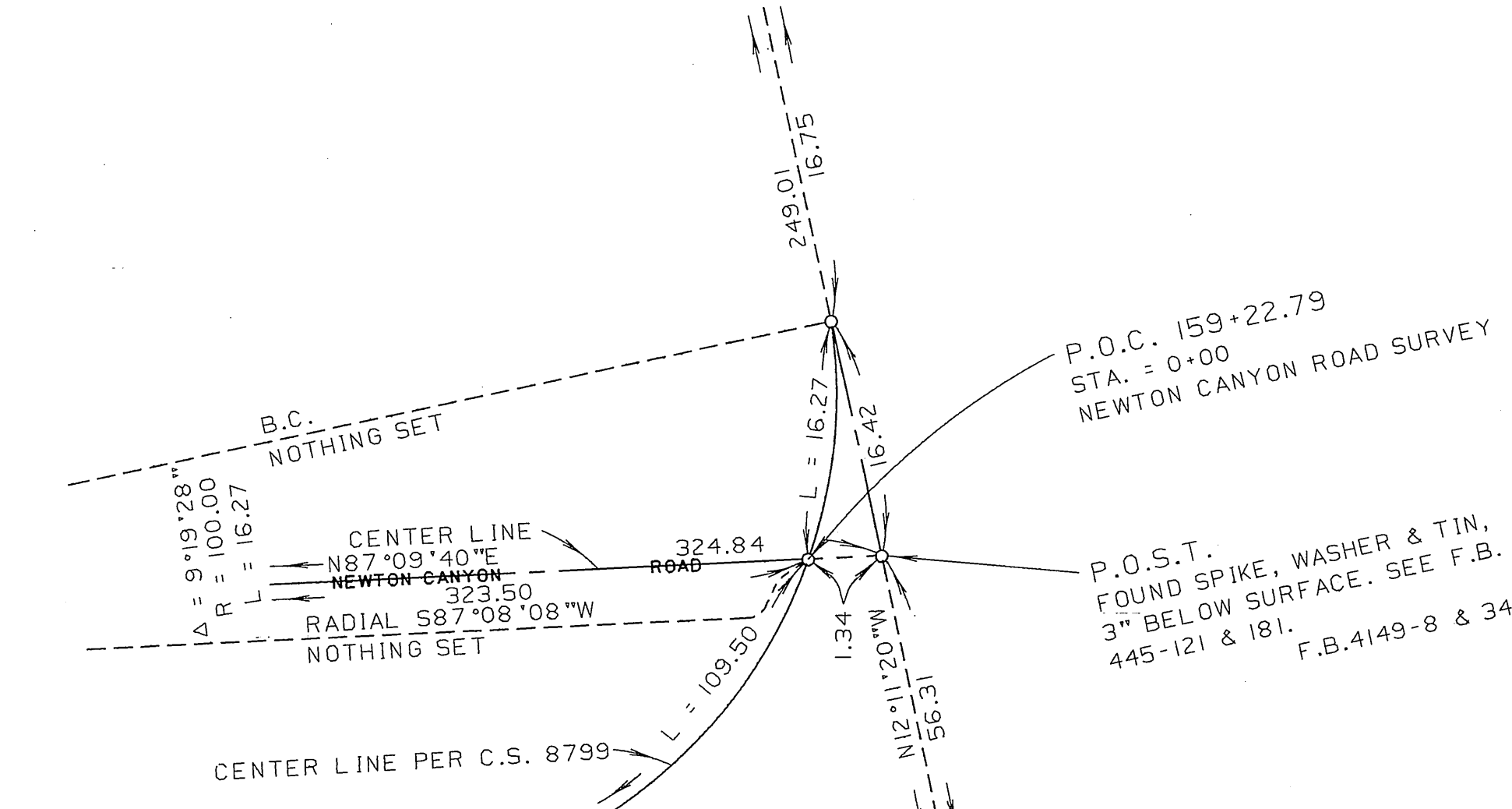
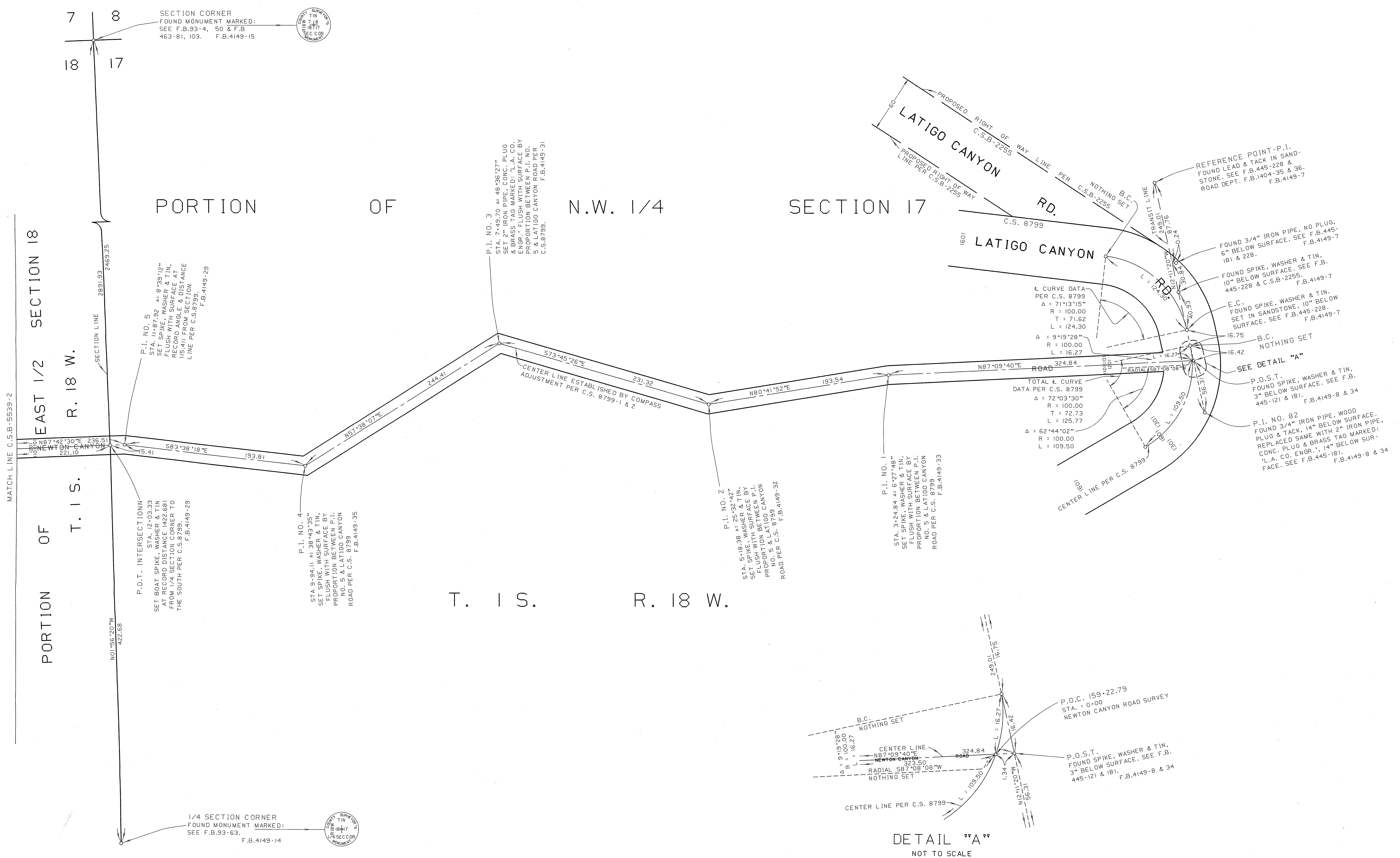


C 2 B - 2230 - 1



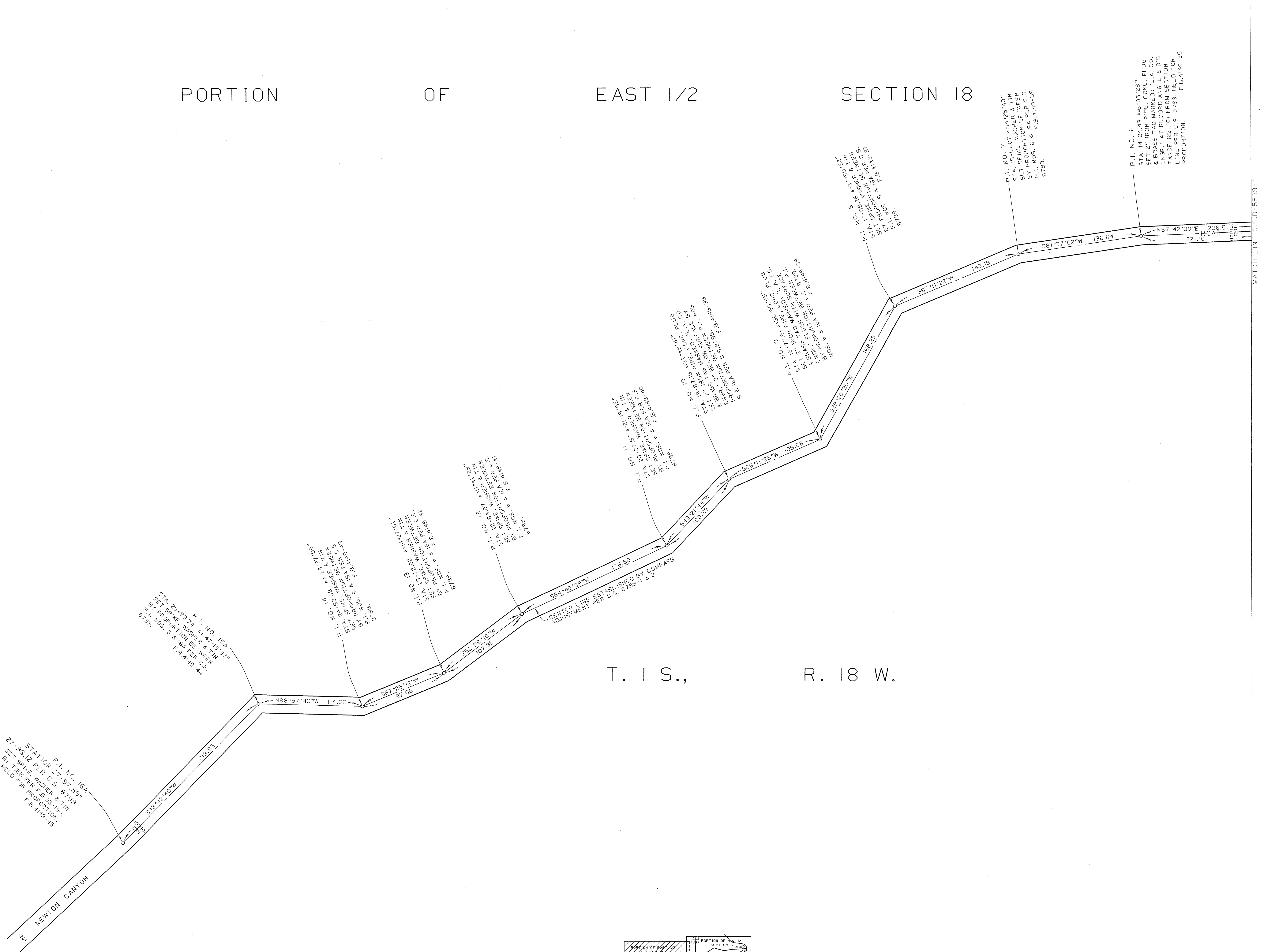
INDEX MAP
NOT TO SCALE

C 2 B - 2230 - 1

COUNTY OF LOS ANGELES DEPARTMENT OF PUBLIC WORKS T. A. TIDEMANSON - COUNTY ENGINEER PREPARED BY MAPPING AND PROPERTY MANAGEMENT DIVISION AND SURVEY DIVISION SURVEYED BY - R. C. DALE CHECKED BY - E. DUVERNAY DRAWN BY - G. MASUDA	MAP OF NEWTON CANYON ROAD FROM LATIGO CANYON ROAD TO STATION 27+96.12 PER C.S.8799		COUNTY SURVEYOR'S MAP NO B-5539 SHEET 1 OF 2 SHEETS FILED: <i>[Signature]</i> 1988 ASST. DEPUTY DIRECTOR
	BASIS OF BEARINGS THE CENTERLINE OF LATIGO CANYON ROAD (S12°11'20"E) AS SHOWN ON C.S. 8799		
			SURVEYED JUNE 1975 REFERENCE F.B. 4149
			JOB NUMBER M8752001
			INDEX MAP NO 129-037

PORTION OF EAST 1/2 SECTION 18

T. 1 S., R. 18 W.



STATION 27+96.12 PER C.S. 8799
 SET 2\"/>

P.I. NO. 164
 STA. 25+63.72
 SET 2\"/>

P.I. NO. 164
 STA. 24+24.43
 SET 2\"/>

P.I. NO. 164
 STA. 22+95.10
 SET 2\"/>

P.I. NO. 164
 STA. 21+45.87
 SET 2\"/>

P.I. NO. 164
 STA. 19+96.64
 SET 2\"/>

P.I. NO. 164
 STA. 18+47.41
 SET 2\"/>

P.I. NO. 164
 STA. 16+98.18
 SET 2\"/>

P.I. NO. 164
 STA. 15+48.95
 SET 2\"/>

P.I. NO. 164
 STA. 14+00.00
 SET 2\"/>

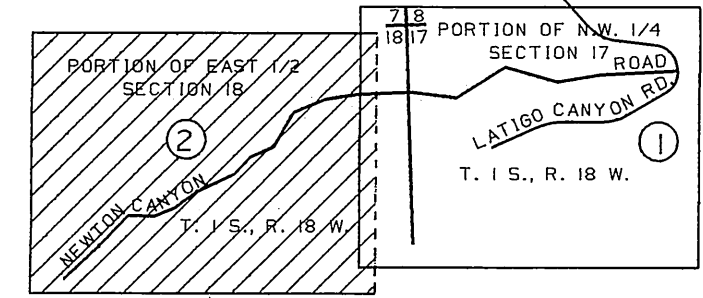
P.I. NO. 164
 STA. 12+50.77
 SET 2\"/>

P.I. NO. 164
 STA. 11+01.54
 SET 2\"/>

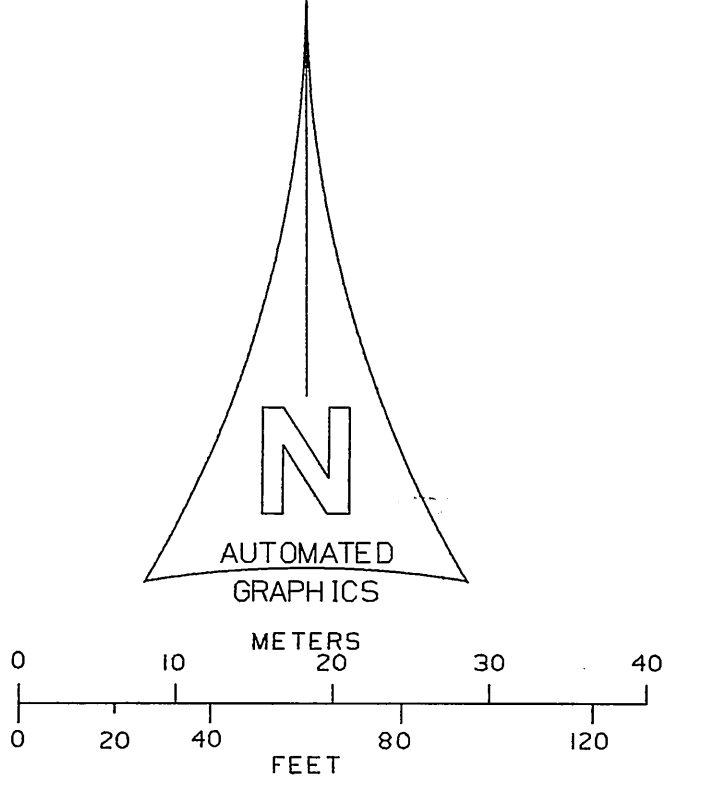
P.I. NO. 164
 STA. 9+52.31
 SET 2\"/>

P.I. NO. 164
 STA. 8+03.08
 SET 2\"/>

MATCH LINE C.S. 8799-1



INDEX MAP NOT TO SCALE



COUNTY OF LOS ANGELES DEPARTMENT OF PUBLIC WORKS PREPARED BY MAPPING AND PROPERTY MANAGEMENT DIVISION AND SURVEY DIVISION SURVEYED BY <u>R. E. DALE</u> CHECKED BY <u>F. L. DUVERNAY</u> DRAWN BY <u>S. MASUDA</u>	MAP OF NEWTON CANYON ROAD FROM LATIGO CANYON ROAD TO STATION 27+96.12 PER C.S. 8799		COUNTY SURVEYOR'S MAP NO B-5539 SHEET 2 OF 2 SHEETS
	FILED: <u>1978</u>		SURVEYED JUNE 1975
	BASIS OF BEARINGS THE CENTERLINE OF LATIGO CANYON ROAD (S12°11'20"E) AS SHOWN ON C.S. 8799		REFERENCE F.B. 4149
	JOB NUMBER M8732001	INDEX MAP NO 129-037	