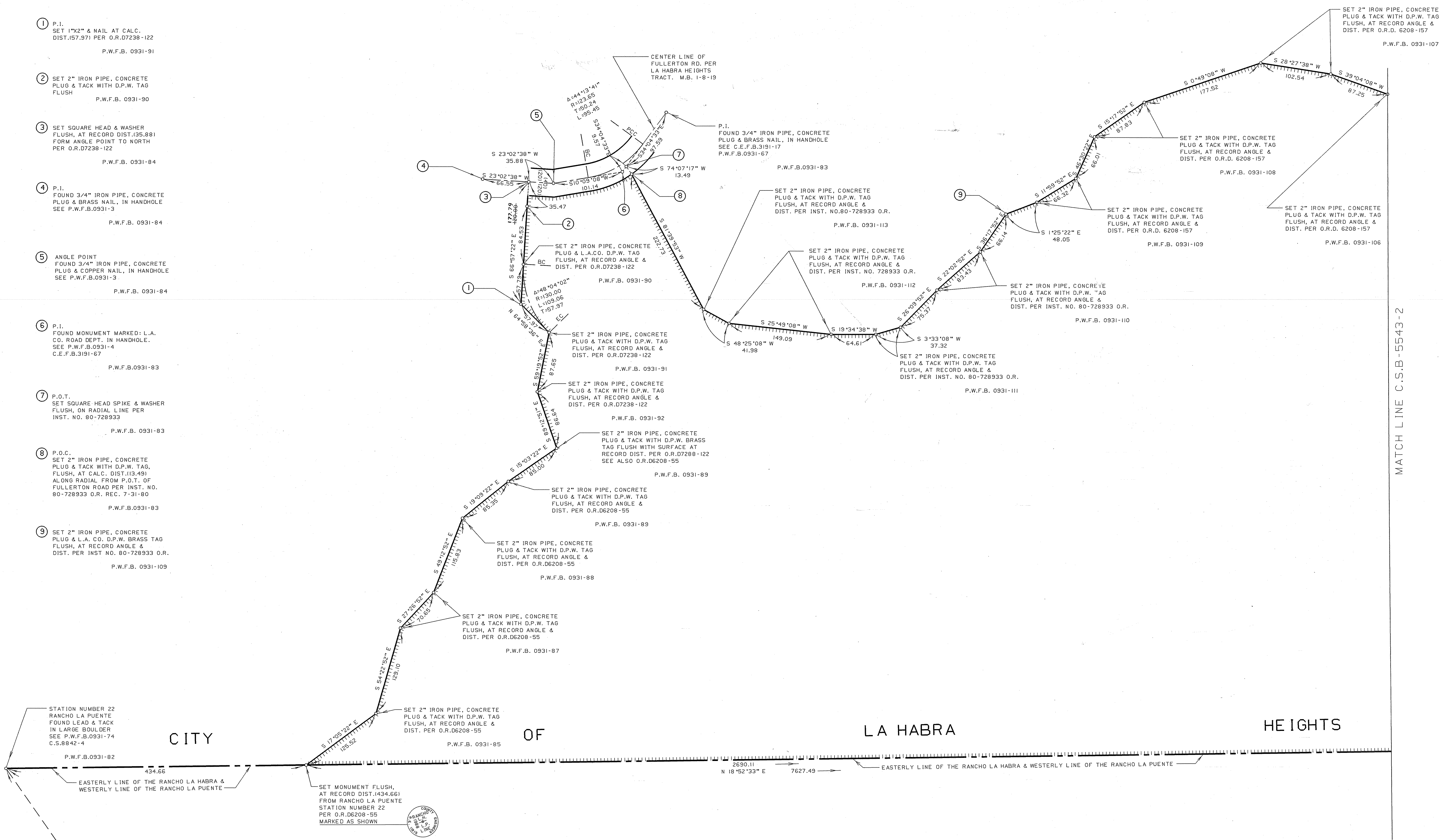
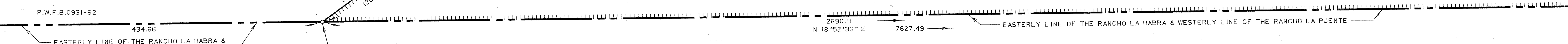


- ① P.I.
SET 1"x2" & NAIL AT CALC.
DIST. 157.971 PER O.R. 07238-122
P.W.F.B. 0931-91
- ② SET 2" IRON PIPE, CONCRETE
PLUG & TACK WITH D.P.W. TAG
FLUSH
P.W.F.B. 0931-90
- ③ SET SQUARE HEAD & WASHER
FLUSH, AT RECORD DIST. 135.881
FORM ANGLE POINT TO NORTH
PER O.R. 07238-122
P.W.F.B. 0931-84
- ④ P.I.
FOUND 3/4" IRON PIPE, CONCRETE
PLUG & BRASS NAIL, IN HANDHOLE
SEE P.W.F.B. 0931-3
P.W.F.B. 0931-84
- ⑤ ANGLE POINT
FOUND 3/4" IRON PIPE, CONCRETE
PLUG & COPPER NAIL, IN HANDHOLE
SEE P.W.F.B. 0931-3
P.W.F.B. 0931-84
- ⑥ P.I.
FOUND MONUMENT MARKED: L.A.
CO. ROAD DEPT. IN HANDHOLE.
SEE P.W.F.B. 0931-4
C.E.F.B. 3191-67
P.W.F.B. 0931-83
- ⑦ P.O.T.
SET SQUARE HEAD SPIKE & WASHER
FLUSH, ON RADIAL LINE PER
INST. NO. 80-728933
P.W.F.B. 0931-83
- ⑧ P.O.C.
SET 2" IRON PIPE, CONCRETE
PLUG & TACK WITH D.P.W. TAG,
FLUSH, AT CALC. DIST. 113.491
ALONG RADIAL FROM P.O.T. OF
FULLERTON ROAD PER INST. NO.
80-728933 O.R. REC. 7-31-80
P.W.F.B. 0931-83
- ⑨ SET 2" IRON PIPE, CONCRETE
PLUG & TACK WITH D.P.W. TAG
FLUSH, AT RECORD ANGLE &
DIST. PER INST. NO. 80-728933 O.R.
P.W.F.B. 0931-109

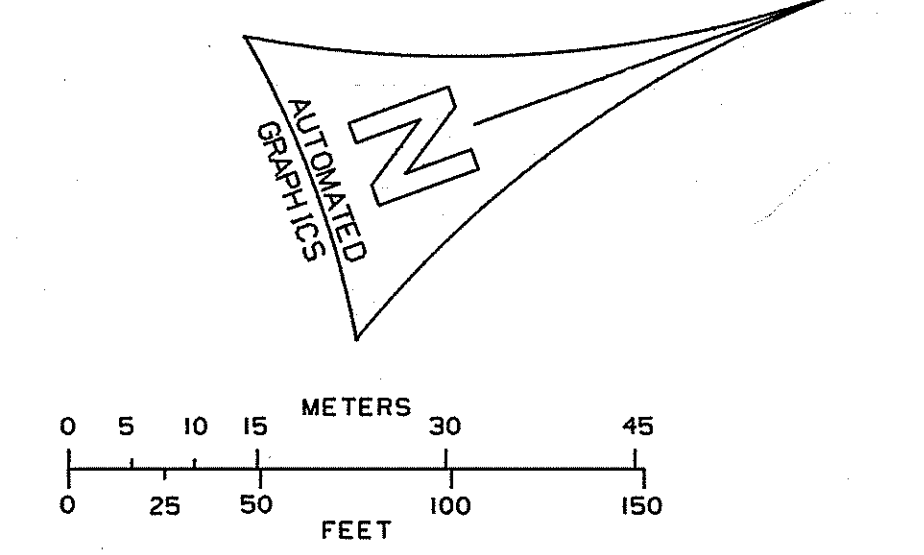
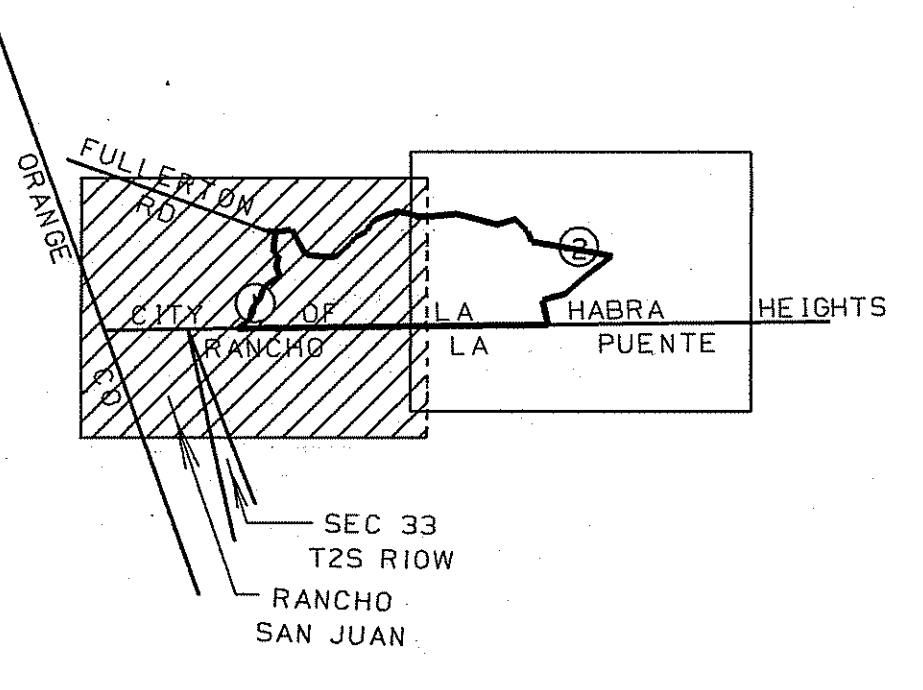
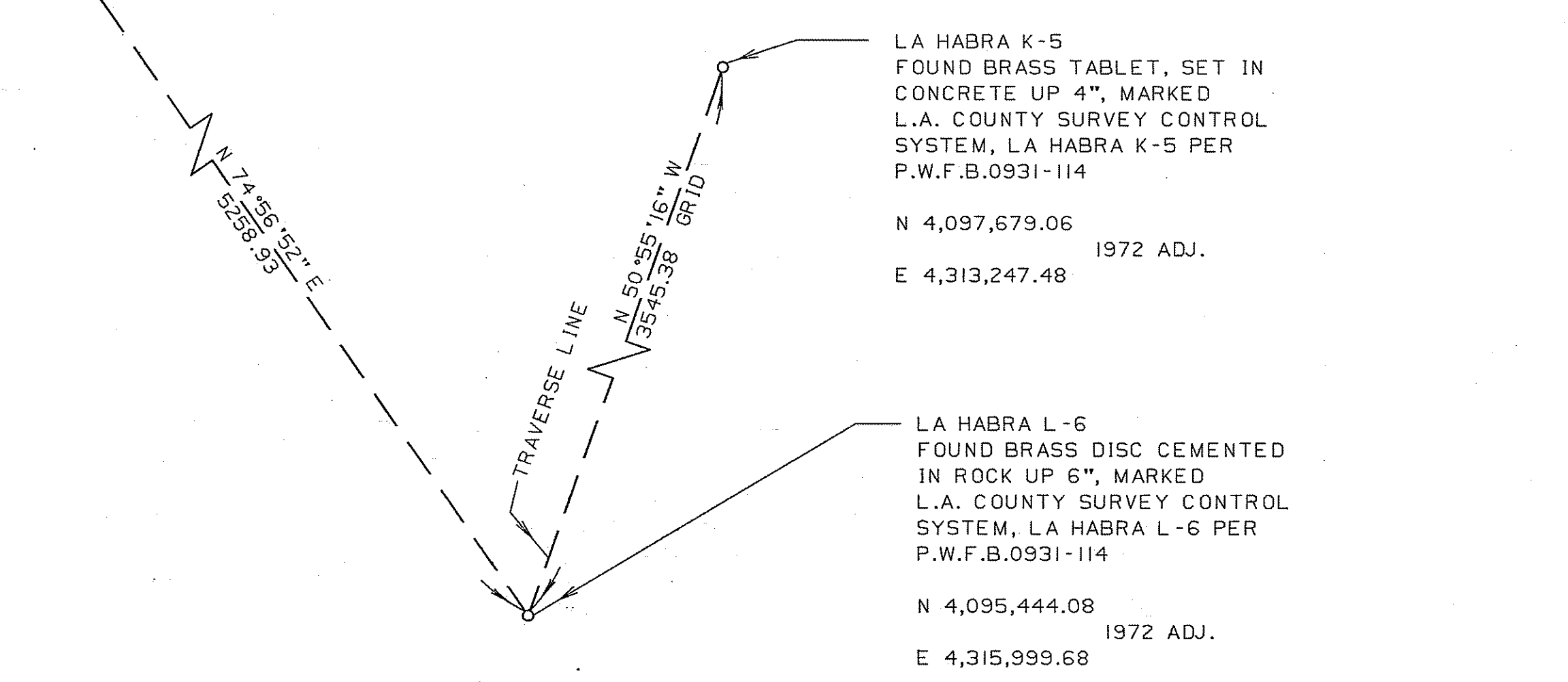


CITY OF LA HABRA HEIGHTS



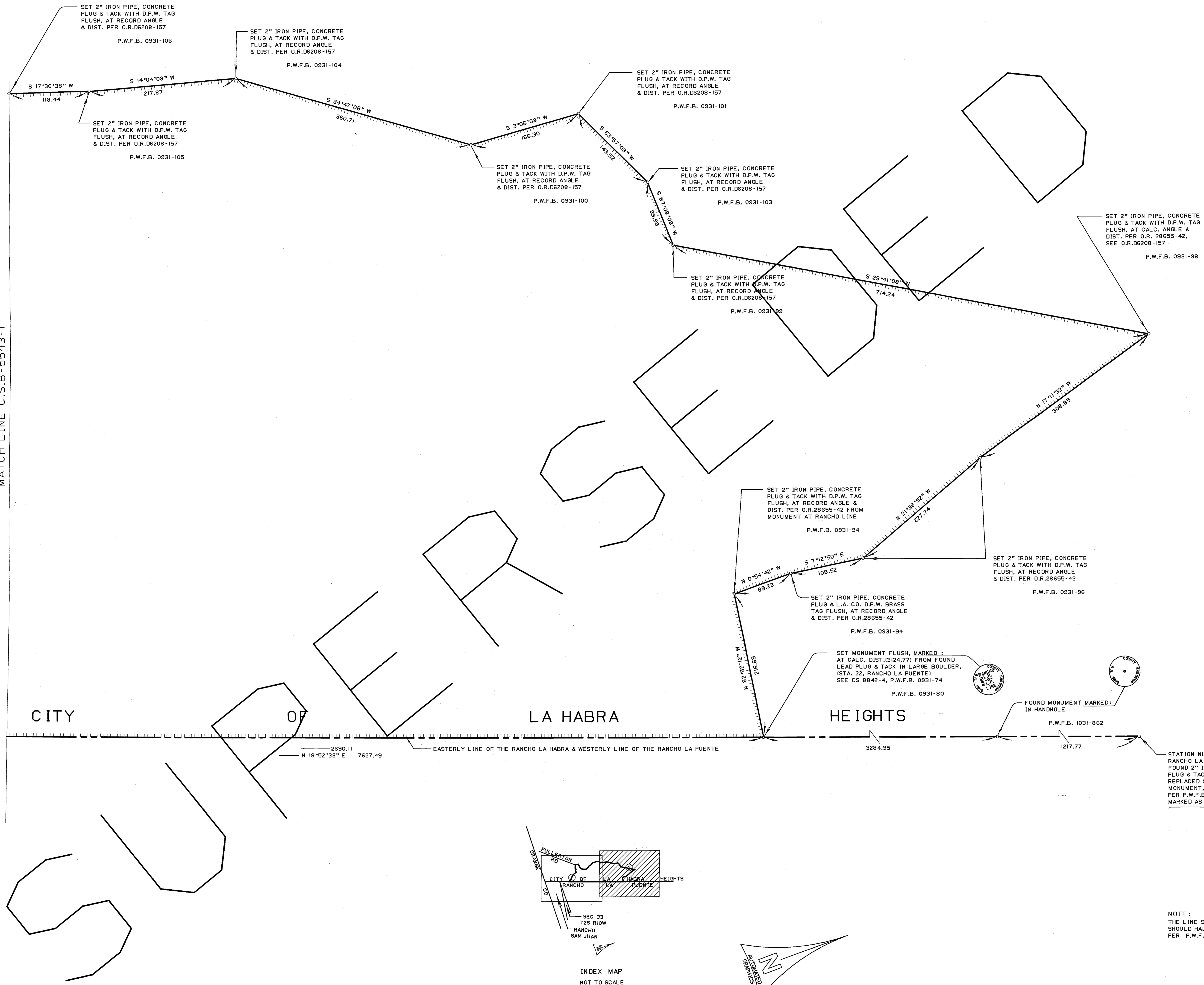
STATION NUMBER 22
RANCHO LA PUENTE
FOUND LEAD & TACK
IN LARGE BOULDER
SEE P.W.F.B. 0931-74
C.S. 8842-4
P.W.F.B. 0931-82

SET MONUMENT FLUSH,
AT RECORD DIST. 1434.661
FROM RANCHO LA PUENTE
STATION NUMBER 22
PER O.R. D6208-55
MARKED AS SHOWN



COUNTY OF LOS ANGELES DEPARTMENT OF PUBLIC WORKS T. A. TIGHEMANSON - COUNTY ENGINEER PREPARED BY MAPPING AND PROPERTY MANAGEMENT DIVISION AND SURVEY DIVISION SURVEYED BY <u>S. QUIZADO</u> CHECKED BY <u>E. DUVERNAY</u> DRAWN BY <u>A. HAYAMI</u>	MAP OF BOUNDRY MAP OF OFFSITE FULLERTON ROAD		COUNTY SURVEYOR'S MAP NO B-5543 SHEET 1 OF 2 SHEETS FILED: <u>10/18/88</u> ASST. COUNTY DIRECTOR SURVEYED MAY-JULY 1988
	BASIS OF BEARINGS CALIFORNIA COORDINATE SYSTEM ZONE 7, N.A.D. 1927		REFERENCE P.W.F.B. 0931 P.W.F.B. 1031 JOB NUMBER M8932001 INDEX MAP NO 084-297

MATCH LINE C.S.B-5543-1

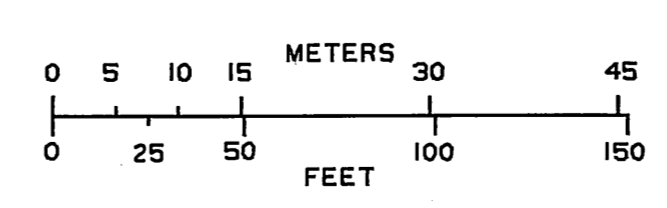
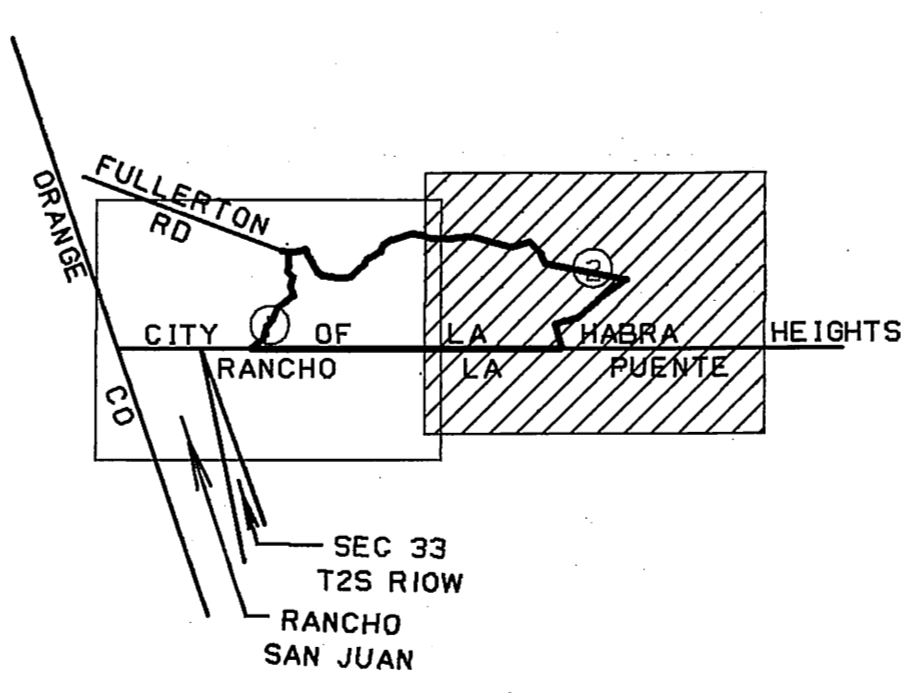


CITY

OF

LA HABRA

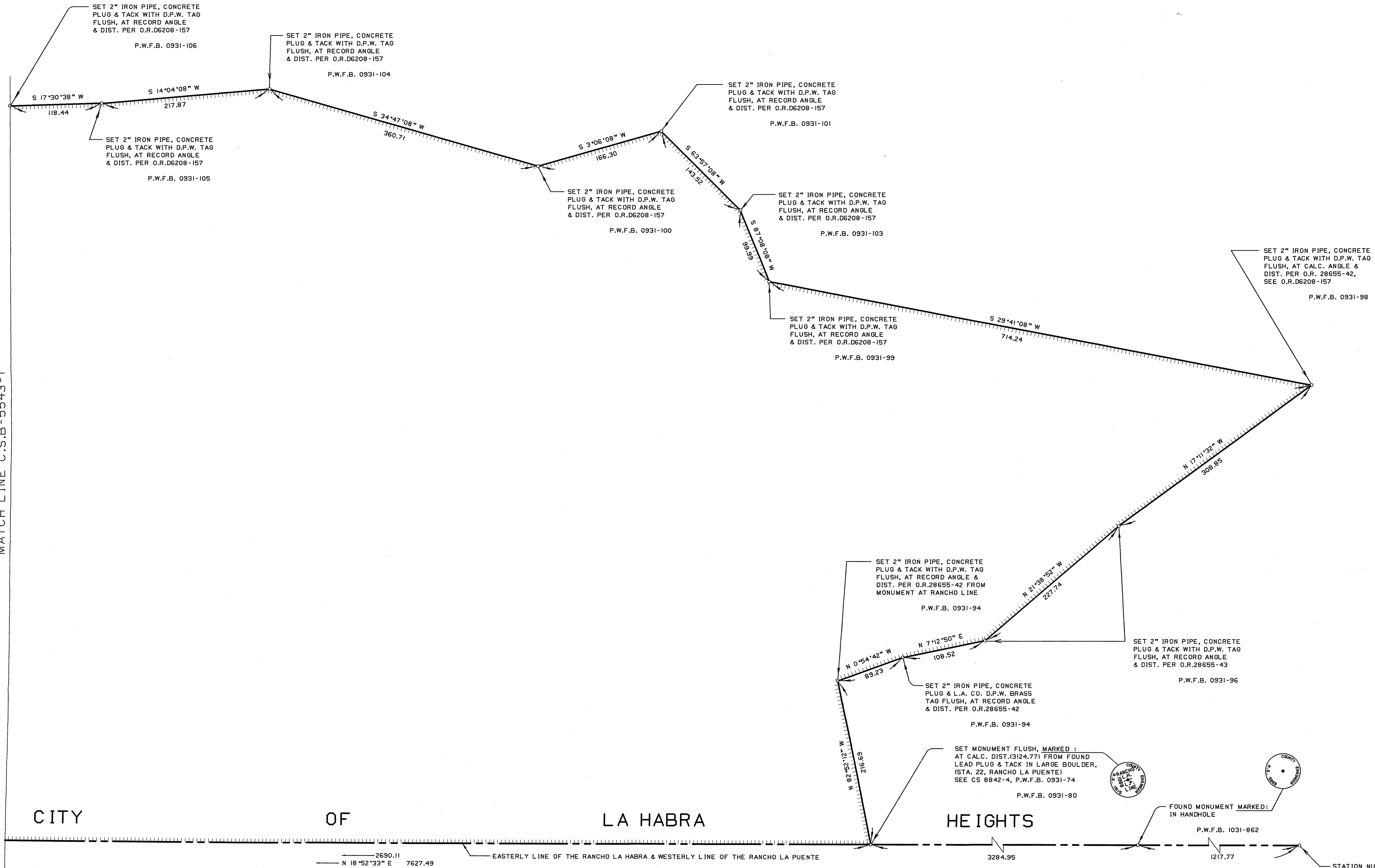
HEIGHTS



NOTE:
 THE LINE SHOWN ABOVE AS S 7°12'50\"/>

COUNTY OF LOS ANGELES DEPARTMENT OF PUBLIC WORKS T. A. TIDEMANSON - COUNTY ENGINEER PREPARED BY MAPPING AND PROPERTY MANAGEMENT DIVISION AND SURVEY DIVISION SURVEYED BY <u>S. QUIZARDO</u> CHECKED BY <u>F. DUVERNEY</u> DRAWN BY <u>A. HAYAMI</u>	MAP OF BOUNDRY MAP OF OFFSITE FULLERTON ROAD BASIS OF BEARINGS CALIFORNIA COORDINATE SYSTEM ZONE 7, N.A.D. 1927	COUNTY SURVEYOR'S MAP NO B-5543 SHEET 2 OF 2 SHEETS FILED: _____, 19__ ASST. DEPUTY DIRECTOR SURVEYED MAY-JULY 1988
		REFERENCE P.W.F.B. 0931 P.W.F.B. 1031 JOB NUMBER M8932001 TRICK MAP NO 084-297

MATCH LINE C.S.B-5543-I



CITY

OF

LA HABRA

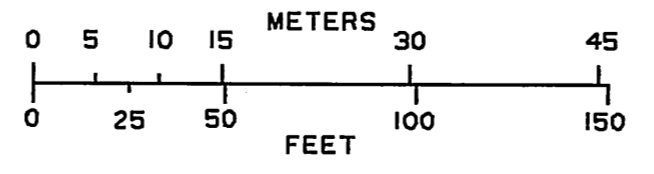
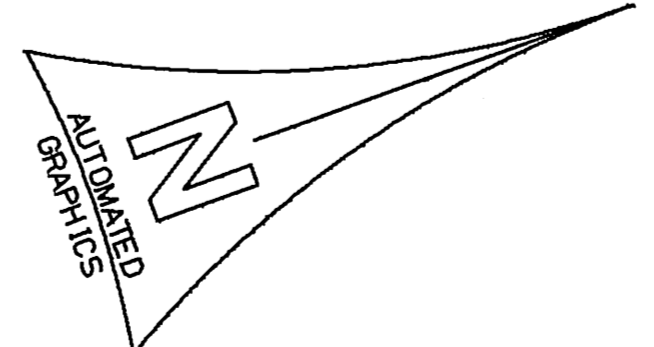
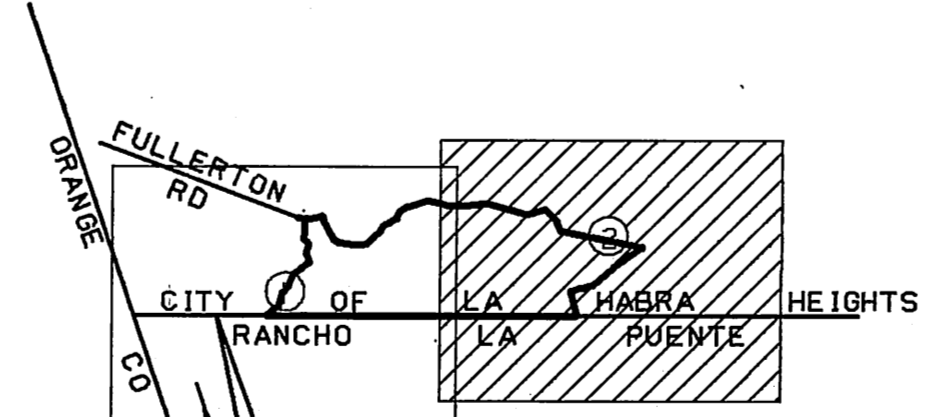
HEIGHTS

2690.11 N 18°52'33\"/>

EASTERLY LINE OF THE RANCHO LA HABRA & WESTERLY LINE OF THE RANCHO LA PUENTE

3284.95 1217.77

STATION NUMBER 23
RANCHO LA PUENTE
FOUND 2\"/>



NOTE:
THE LINE WAS SHOWN AS S 7°12'50\"/>

COUNTY OF LOS ANGELES DEPARTMENT OF PUBLIC WORKS T. A. TIDEMANSON - COUNTY ENGINEER PREPARED BY MAPPING AND PROPERTY MANAGEMENT DIVISION AND SURVEY DIVISION SURVEYED BY <u>G. GUZARDO</u> CHECKED BY <u>E. DUVERNAY</u> DRAWN BY <u>J. HAYAMI</u>	MAP OF BOUNDRY MAP OF OFFSITE FULLERTON ROAD	COUNTY SURVEYOR'S MAP NO B-5543 SHEET 2 OF 2 SHEETS FILED: <u>March 10, 1988</u> <u>Barney S. Conroy</u> ASST. CHIEF MAPS & PROP. MGT. SURVEYED MAY - JULY 1988
	BASIS OF BEARINGS CALIFORNIA COORDINATE SYSTEM ZONE 7, N.A.D. 1927	REFERENCE P.W.F.B. 0931 P.W.F.B. 1031 JOB NUMBER M8932001 INDEX MAP NO 084-297