

SECTION 36 T. 6 N., R. 11 W.

SECTION 35 T. 6 N., R. 11 W.

SECTION CORNER
FOUND MONUMENT MARKED:
12" BELOW SURFACE.
F.B.2639-176



MATCH LINE C.S.B-5545-2

70TH

T. 6 N.

SECTION 2 T. 5 N., R. 11 W.

AVENUE

ST. E

SECTION LINE

FOUND 2" IRON PIPE WITH CONCRETE
PLUG & TAC MARKED L.S.2249.
6" ABOVE SURFACE. F.B.2636-172

N 0°02'20" E
1354.73
← 2709.52

N 42°50'45" E
1047.70

E.C. 128.06.25

4°44'00"00"
R=1500.00'
T=806.04'
L=1151.92'

SET 1" IRON PIPE WITH CONCRETE
PLUG & BRASS TAG MARKED L.A. CO.
ENGINEER. 4" ABOVE SURFACE.
F.B.2636-197

128.06.25 E.C.
SET 1" IRON PIPE WITH CONCRETE
PLUG & BRASS TAG MARKED L.A. CO.
ENGINEER. 12" BELOW SURFACE.
F.B.2636-197

SET 1" IRON PIPE WITH CONCRETE
PLUG & BRASS TAG MARKED L.A. CO.
ENGINEER. 4" ABOVE SURFACE.
F.B.2636-197

SET 1" IRON PIPE WITH CONCRETE
PLUG & BRASS TAG MARKED L.A. CO.
ENGINEER. 4" ABOVE SURFACE.
F.B.2636-197

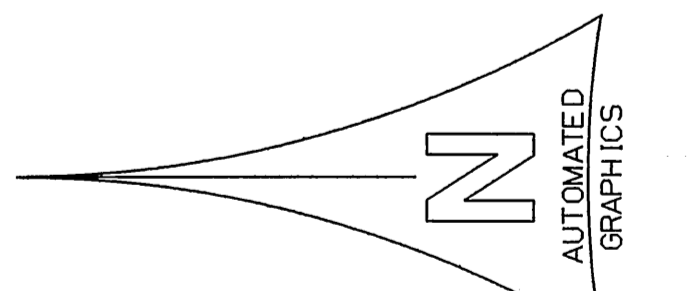
116.54.33 B.C.
SET 1" IRON PIPE WITH CONCRETE
PLUG & BRASS TAG MARKED L.A. CO.
ENGINEER. 12" BELOW SURFACE.
F.B.2636-197

SET 1" IRON PIPE WITH CONCRETE
PLUG & BRASS TAG MARKED L.A. CO.
ENGINEER. 4" ABOVE SURFACE.
F.B.2636-197

B.C. 116.54.33



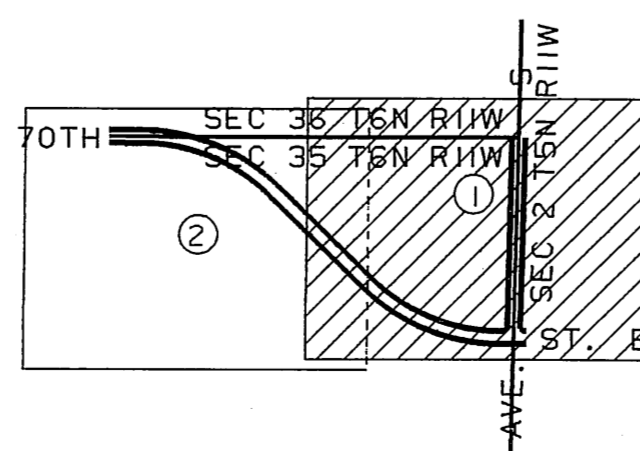
116.54.33 CLOSING CORNER
FOUND MONUMENT MARKED:
15" BELOW SURFACE.
F.B.2636-40,176



0 6 12 18 24 30 36 42 48 54
FEET
0 6 12 18 24 30 36 42 48 54
METERS

SECTION LINE
AND CENTER LINE

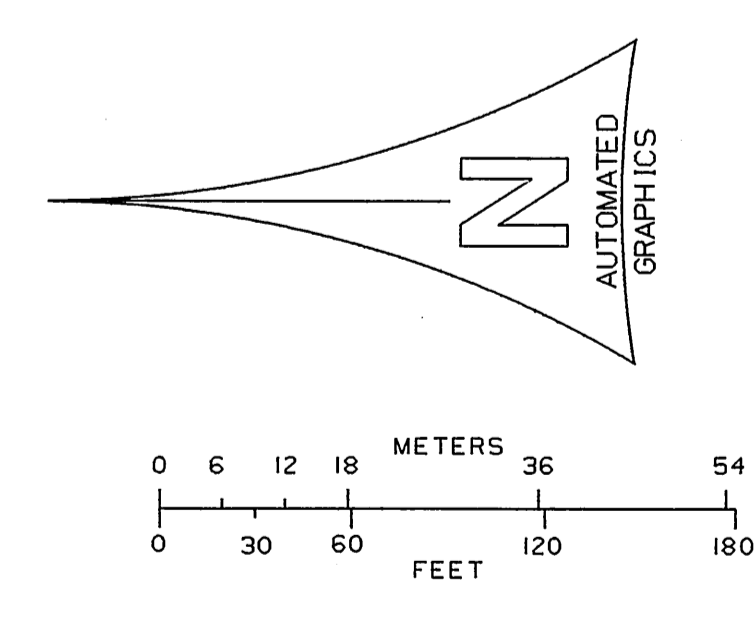
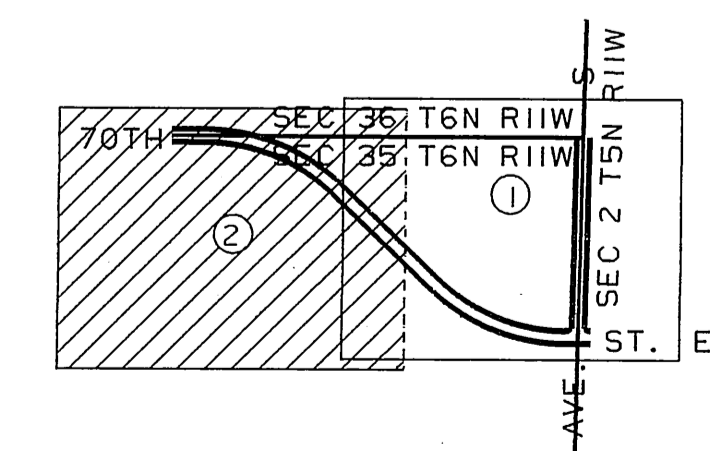
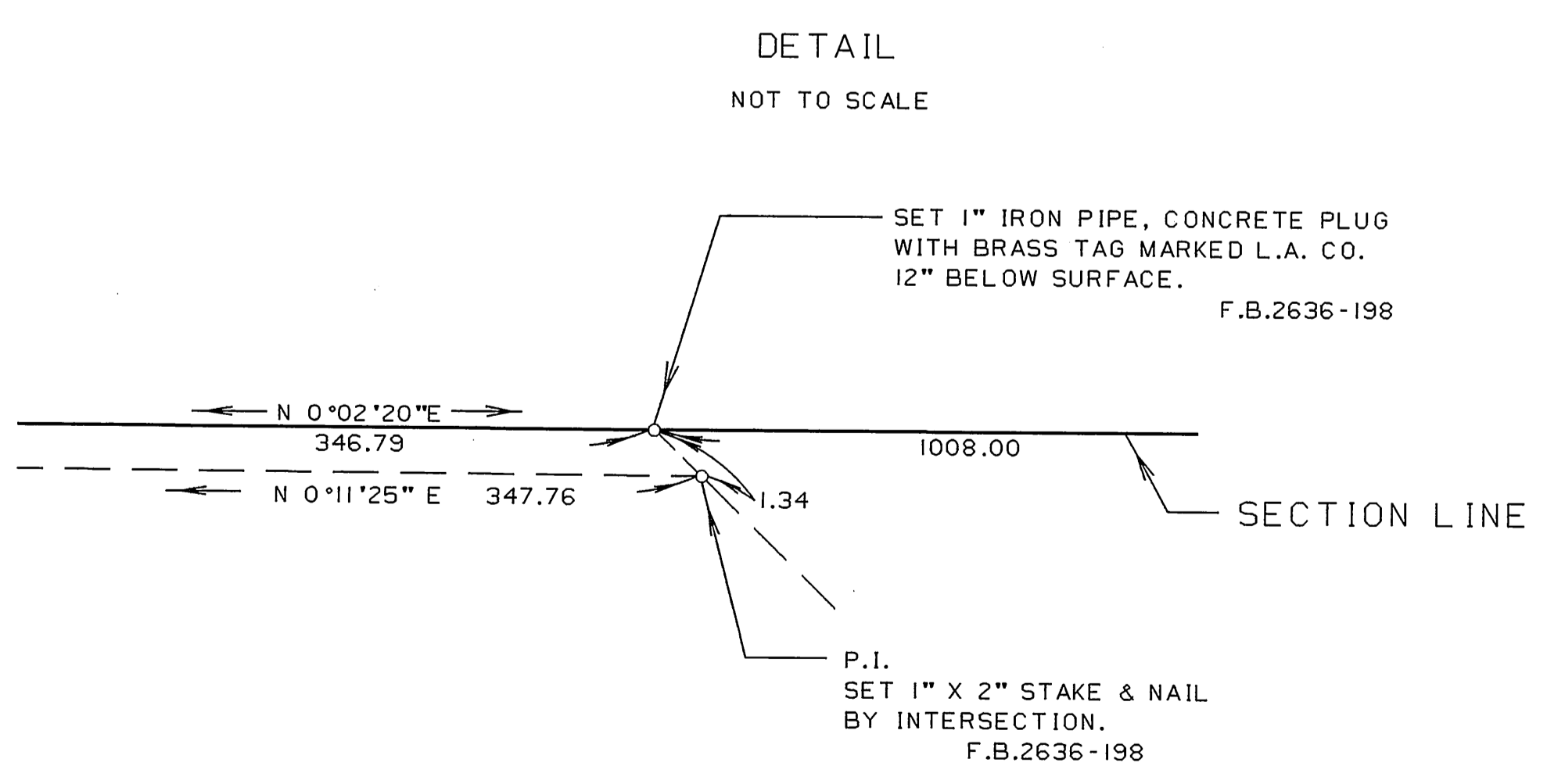
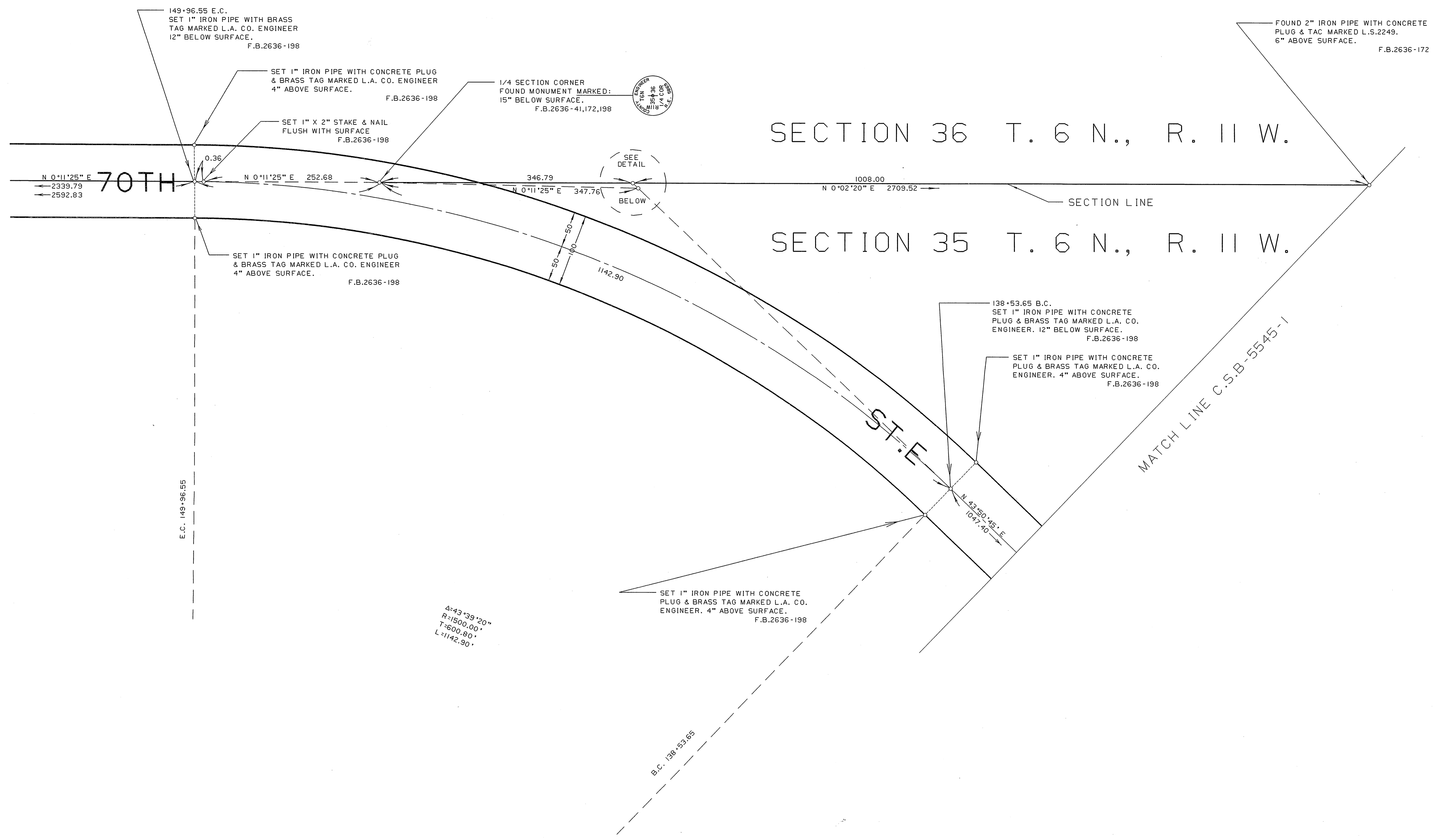
P.I.
SET 1" IRON PIPE WITH CONCRETE
PLUG & BRASS TAG MARKED L.A. CO.
ENGINEER. 12" BELOW SURFACE.
F.B.2636-197



INDEX MAP
NOT TO SCALE

NOTE: THE PURPOSE OF THIS MAP IS TO
CORRECT THE DISTANCE (2809.28) ON THE
EAST LINE OF SEC. 35, T6N, R11W AS
SHOWN ON C.S.B-2716-2 TO BE (2709.52)

COUNTY OF LOS ANGELES DEPARTMENT OF PUBLIC WORKS T. A. TIDEMANSON - COUNTY ENGINEER PREPARED BY MAPPING AND PROPERTY MANAGEMENT DIVISION AND SURVEY DIVISION SURVEYED BY <u>J.S. COATES</u> CHECKED BY <u>E. DUVERNEY</u> DRAWN BY <u>A. HAYAMI</u>	MAP OF CORRECTION MAP FOR C.S.B-2716-2	COUNTY SURVEYOR'S MAP NO B-5545 SHEET 1 OF 2 SHEETS
		FILED: <u>2020</u> 19 <u>88</u> ASST. COUNTY ENGINEER SURVEYED 1959 REFERENCE F.B. 2636-163-207
BASIS OF BEARINGS N 0°02'20" E AS SHOWN ON EAST LINE SEC. 35, T6N, R11W	JOB NUMBER M8332001	INDEX MAP NO 65-E-3



NOTE: THE PURPOSE OF THIS MAP IS TO CORRECT THE DISTANCE (2809.28) ON THE EAST LINE OF SEC. 35, T6N, R11W AS SHOWN ON C.S.B-2716-2 TO BE (2709.52)

COUNTY OF LOS ANGELES DEPARTMENT OF PUBLIC WORKS T. A. TIDEMANSON - COUNTY ENGINEER PREPARED BY MAPPING AND PROPERTY MANAGEMENT DIVISION AND SURVEY DIVISION SURVEYED BY J. S. COATES CHECKED BY E. DUVERNAY DRAWN BY A. HAYAMI	MAP OF CORRECTION MAP FOR C.S.B-2716-2	COUNTY SURVEYOR'S MAP NO B-5545 SHEET 2 OF 2 SHEETS FILED: 10/22/99 ASST. COUNTY DIRECTOR
	BASIS OF BEARINGS N 0°02'20" E AS SHOWN ON EAST LINE SEC. 35, T6N, R11W	REFERENCE F.B. 2636-163-207
	JOB NUMBER M8932001	INDEX MAP NO 65-E-3
	1959	