

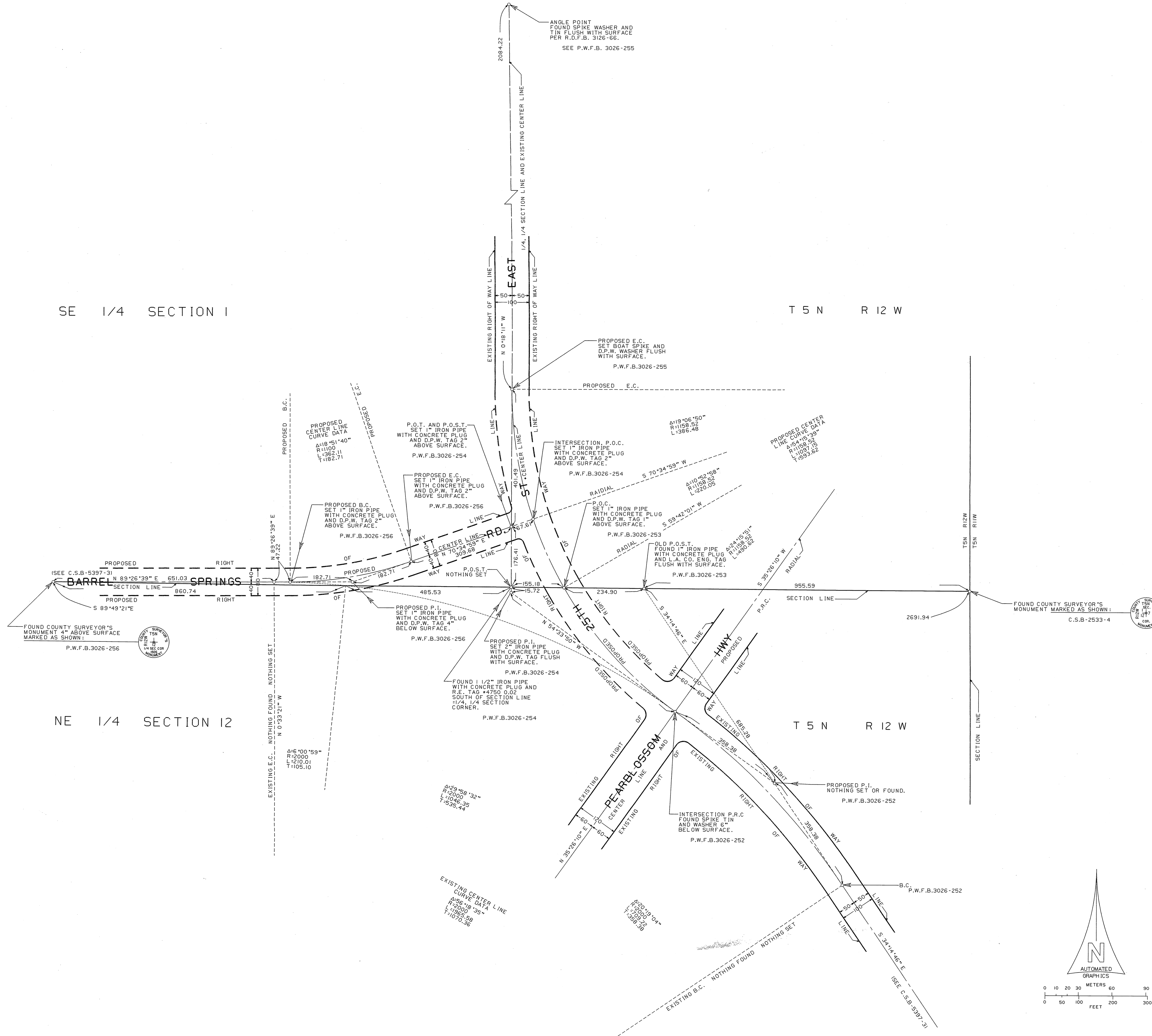
C.2.B-2241

SE 1/4 SECTION 1

T 5 N R 12 W

NE 1/4 SECTION 12

T 5 N R 12 W



NOTE:
 THIS MAP DELINEATES THE PROPOSED
 ALIGNMENT OF BARREL SPRINGS ROAD
 AND 25TH STREET EAST PER SURVEY
 SECTION FILE MAP P-210 DATED
 8-25-89

COUNTY OF LOS ANGELES DEPARTMENT OF PUBLIC WORKS T. A. TIDEWATSON - COUNTY ENGINEER PREPARED BY MAPPING AND PROPERTY MANAGEMENT DIVISION AND SURVEY DIVISION SURVEYED BY - O. BRYAN CHECKED BY - E. QUERNAY DRAWN BY - A. G. HAYAMI	ALIGNMENT MAP OF BARREL SPRINGS ROAD AND 25TH STREET EAST IN THE SE 1/4 SECTION 1, T5N, R12W AND THE NE 1/4 SECTION 12, T5N, R12W.		COUNTY SURVEYOR'S MAP NO B-5547 SHEET 1 OF 1 SHEETS FILED: <i>[Signature]</i> 11 19 89 ASST. DEPUTY DIRECTOR SURVEYED MAY 1989
	BASIS OF BEARINGS CALIFORNIA COORDINATES SYSTEM ZONE 7, NAD 1927 AS SHOWN ON C.S.B-5397.		REFERENCE P.W.F.B.3026 C.S.B-2830 C.S.B-2533-4 C.S.B-5397-3 JOB NUMBER INDEX MAP NO E0387002 304-257 309-257

C.2.B-2241