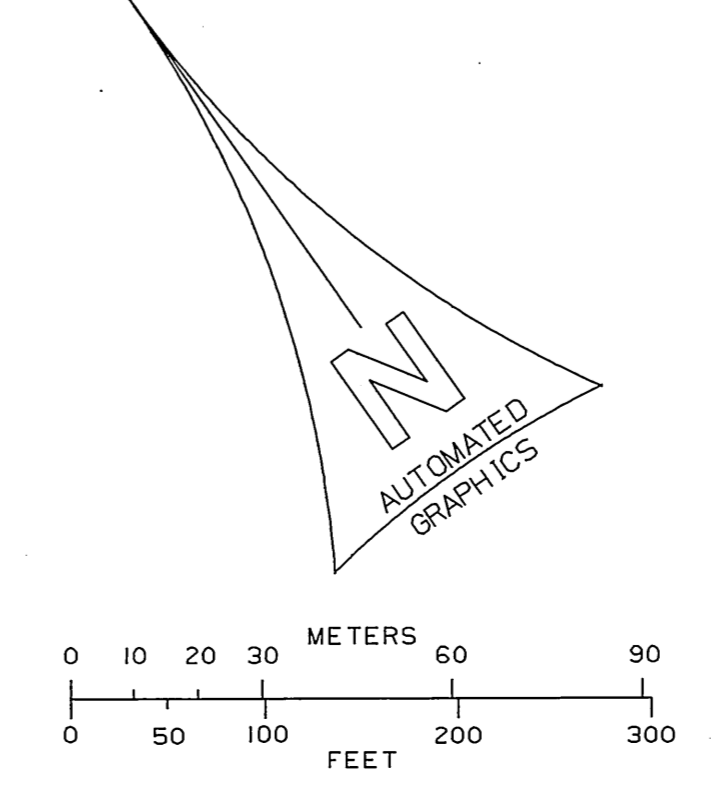
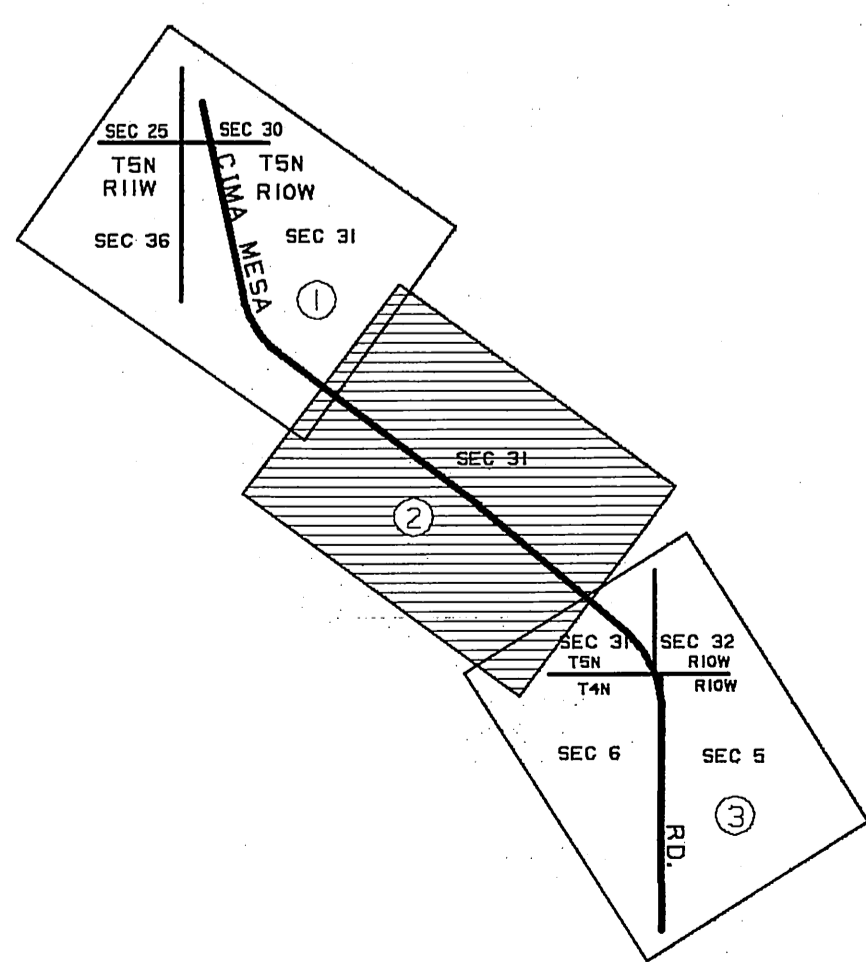
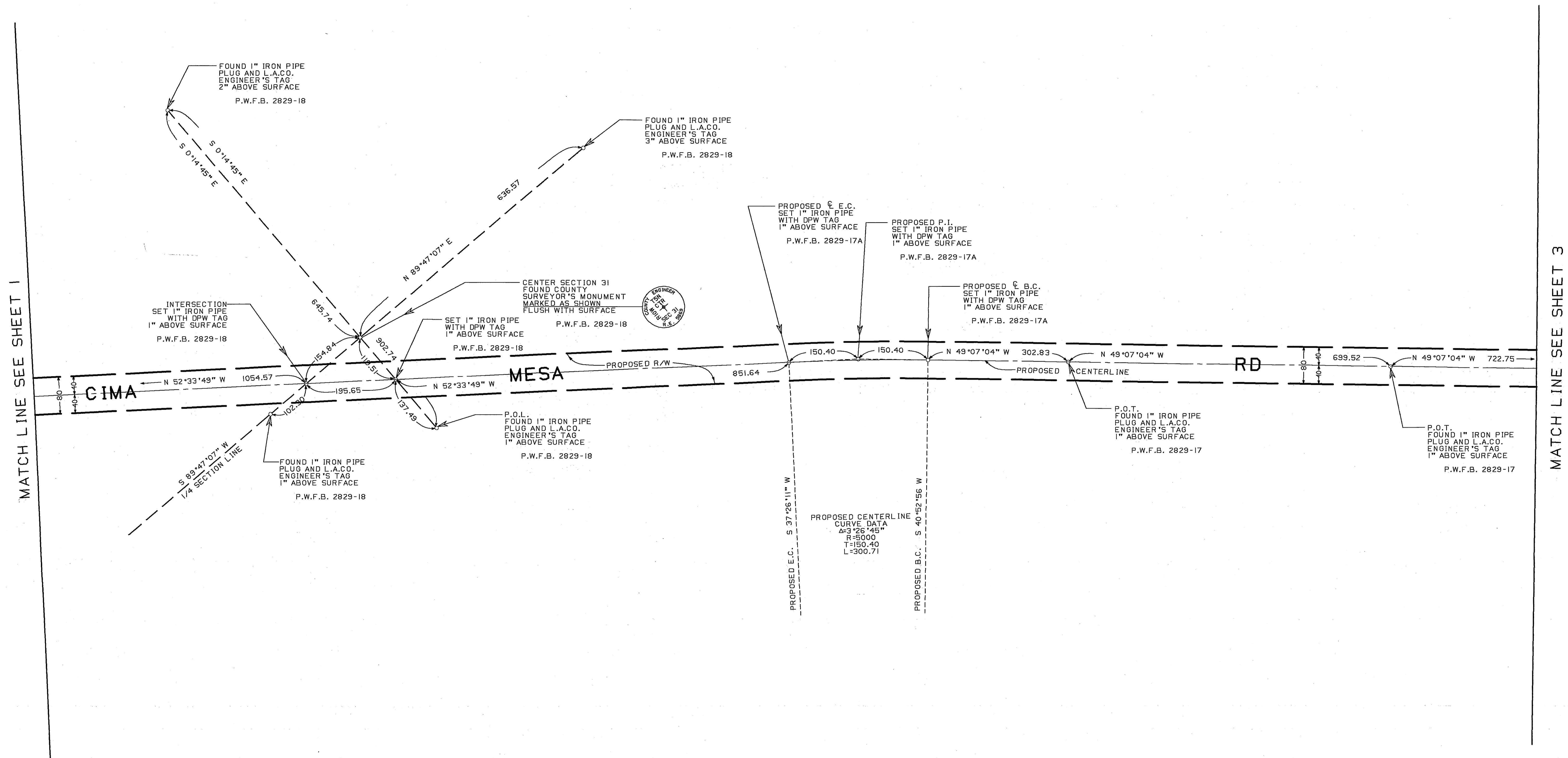


INDEX MAP NOT TO SCALE

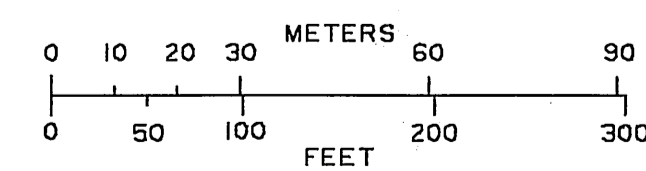
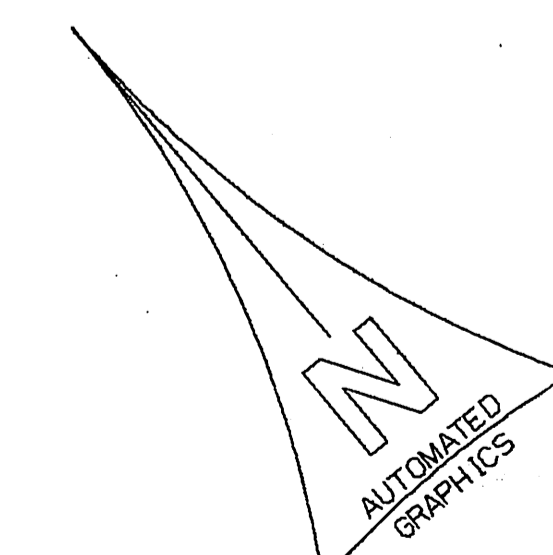


COUNTY OF LOS ANGELES DEPARTMENT OF PUBLIC WORKS T. A. TIDEMANSON - COUNTY ENGINEER PREPARED BY MAPPING AND PROPERTY MANAGEMENT DIVISION AND SURVEY DIVISION SURVEYED BY <u>P.B. SMITH</u> CHECKED BY <u>D.V.L. ARBEAL</u> DRAWN BY <u>A.B. HAYAMI</u>	MAP OF CIMA MESA ROAD (PROPOSED CENTERLINE ALIGNMENT)	COUNTY SURVEYOR'S MAP NO B-5549 SHEET 1 OF 3 SHEETS FILED: <u>May 20</u> , 19 <u>77</u> ASST. CHIEF MAPS & PROP. MGT. SURVEYED FEB. 1983 REFERENCE P.W.F.B. 2829
	BASIS OF BEARINGS CALIFORNIA COORDINATE SYSTEM, ZONE 7	JOB NUMBER E0387002 INDEX MAP NO I.M. 66

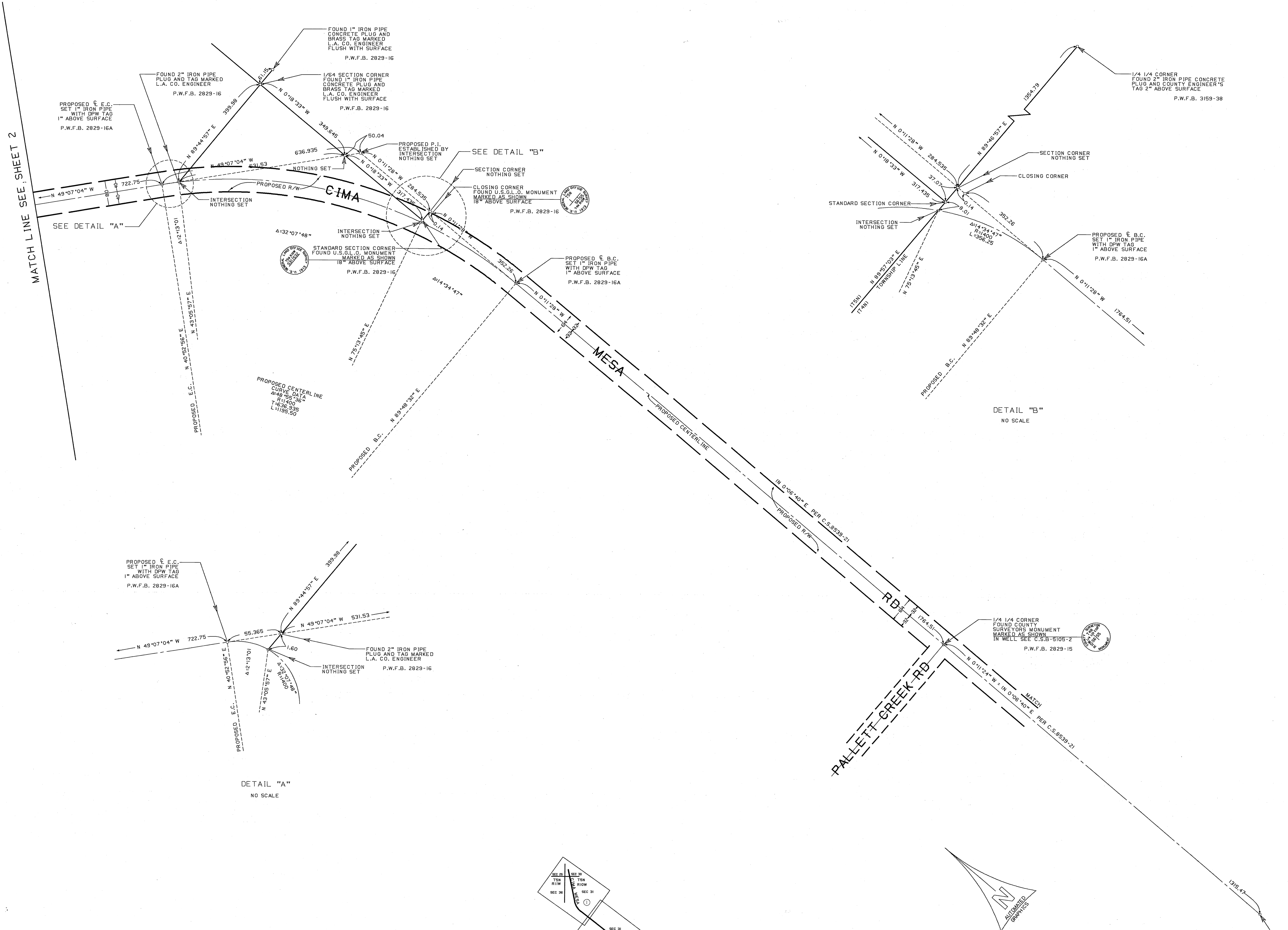
MATCH LINE SEE SHEET 2



INDEX MAP
NOT TO SCALE



COUNTY OF LOS ANGELES DEPARTMENT OF PUBLIC WORKS T. A. TIDEMANSON - COUNTY ENGINEER PREPARED BY MAPPING AND PROPERTY MANAGEMENT DIVISION AND SURVEY DIVISION SURVEYED BY <u>R.B. SMITH</u> CHECKED BY <u>D.V. LARREAL</u> DRAWN BY <u>A.S. HAYAMI</u>	MAP OF CIMA MESA ROAD (PROPOSED CENTERLINE ALIGNMENT)		COUNTY SURVEYOR'S MAP NO B-5549 SHEET 2 OF 3 SHEETS
	BASIS OF BEARINGS CALIFORNIA COORDINATE SYSTEM, ZONE 7		FILED: <u>Map 30</u> , 1922 <u>Charles S. Condit</u> ASST. CHIEF MAPP. & PROP. MGT. SURVEYED FEB. 1989 REFERENCE P.W.F.B. 2829 JOB NUMBER E0387002 INDEX MAP NO I.M. 66



MATCH LINE SEE SHEET 2

PROPOSED E.C. SET 1" IRON PIPE WITH DPW TAG 1" ABOVE SURFACE P.W.F.B. 2829-16A

FOUND 2" IRON PIPE PLUG AND TAG MARKED L.A. CO. ENGINEER P.W.F.B. 2829-16

FOUND 1" IRON PIPE CONCRETE PLUG AND BRASS TAG MARKED L.A. CO. ENGINEER FLUSH WITH SURFACE P.W.F.B. 2829-16

1/4 SECTION CORNER FOUND 1" IRON PIPE CONCRETE PLUG AND BRASS TAG MARKED L.A. CO. ENGINEER FLUSH WITH SURFACE P.W.F.B. 2829-16

PROPOSED P.I. ESTABLISHED BY INTERSECTION NOTHING SET

CLOSING CORNER FOUND U.S.G.L.O. MONUMENT MARKED AS SHOWN 18" ABOVE SURFACE P.W.F.B. 2829-16

STANDARD SECTION CORNER FOUND U.S.G.L.O. MONUMENT MARKED AS SHOWN 18" ABOVE SURFACE P.W.F.B. 2829-16

PROPOSED E.C. SET 1" IRON PIPE WITH DPW TAG 1" ABOVE SURFACE P.W.F.B. 2829-16A

PROPOSED CENTERLINE CURVE DATA
A=32°07'148"
R=1400
T=336.935
L=3196.50

N 0°11'28" W 284.535

N 89°48'57" E 1324.79

SECTION CORNER NOTHING SET

CLOSING CORNER

STANDARD SECTION CORNER

INTERSECTION NOTHING SET

N 89°48'32" E 1764.51

PROPOSED E.C. SET 1" IRON PIPE WITH DPW TAG 1" ABOVE SURFACE P.W.F.B. 2829-16A

DETAIL "B"
NO SCALE

PROPOSED E.C. SET 1" IRON PIPE WITH DPW TAG 1" ABOVE SURFACE P.W.F.B. 2829-16A

N 89°44'57" E 399.98

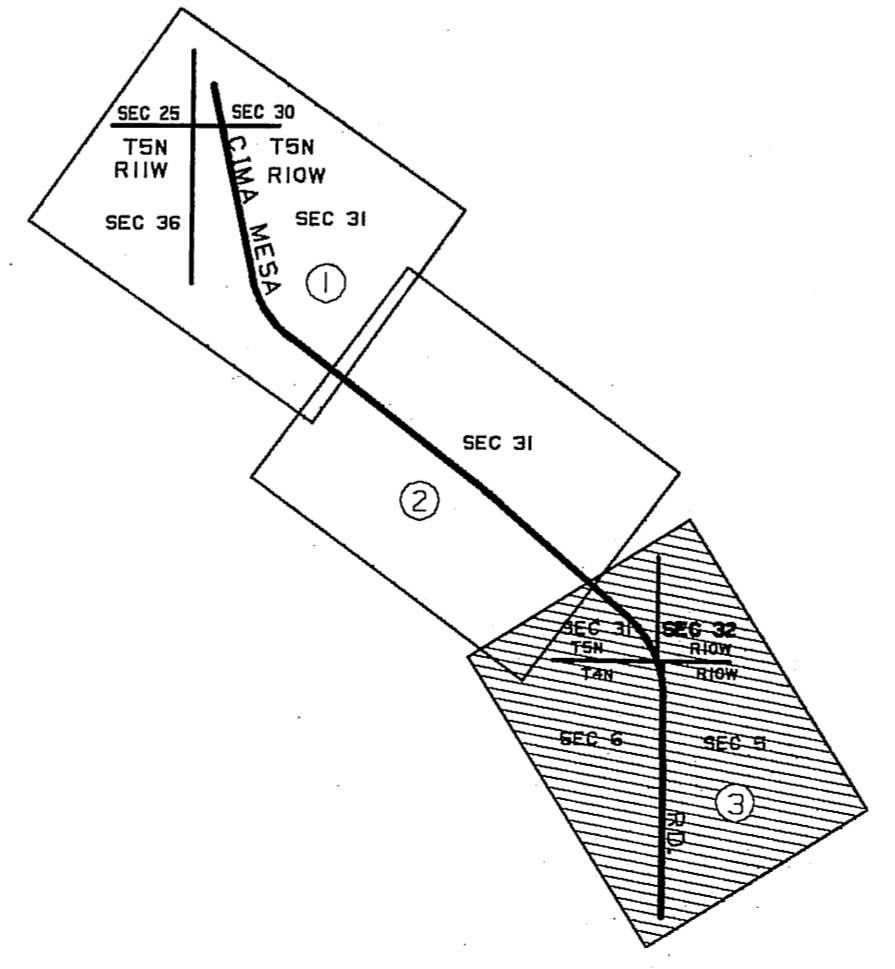
N 49°07'04" W 531.53

FOUND 2" IRON PIPE PLUG AND TAG MARKED L.A. CO. ENGINEER P.W.F.B. 2829-16

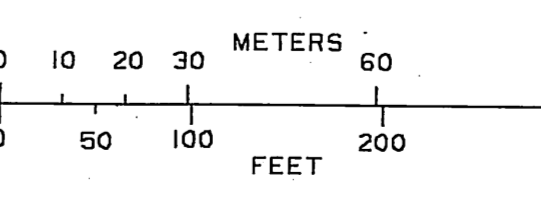
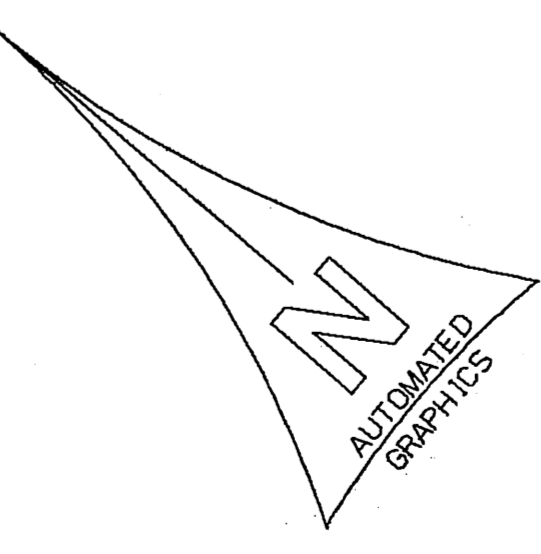
INTERSECTION NOTHING SET

DETAIL "A"
NO SCALE

1/4 1/4 CORNER FOUND COUNTY SURVEYORS MONUMENT MARKED AS SHOWN IN WELL SEE C.S.B. 5105-2 P.W.F.B. 2829-15



INDEX MAP
NOT TO SCALE



1/4 SECTION CORNER FOUND U.S.G.L.O. MONUMENT MARKED AS SHOWN IN WELL SEE C.S.B. 5105-2 P.W.F.B. 2829-15

COUNTY OF LOS ANGELES DEPARTMENT OF PUBLIC WORKS T. A. TIDEMAN - COUNTY ENGINEER PREPARED BY MAPPING AND PROPERTY MANAGEMENT DIVISION AND SURVEY DIVISION SURVEYED BY R.B. SMITH CHECKED BY G.W. LARREAL DRAWN BY A.S. HAYAMI	MAP OF CIMA MESA ROAD (PROPOSED CENTERLINE ALIGNMENT)	COUNTY SURVEYOR'S MAP NO B-5549 SHEET 3 OF 3 SHEETS FILED: <i>May 20</i> 1992 <i>Benjamin Scanlon</i> ASST. CHIEF MAPS & PROP. MGT. SURVEYED FEB. 1989 REFERENCE P.W.F.B. 2829
	BASIS OF BEARINGS CALIFORNIA COORDINATE SYSTEM, ZONE 7	JOB NUMBER E0387002 INDEX MAP NO I.M.66