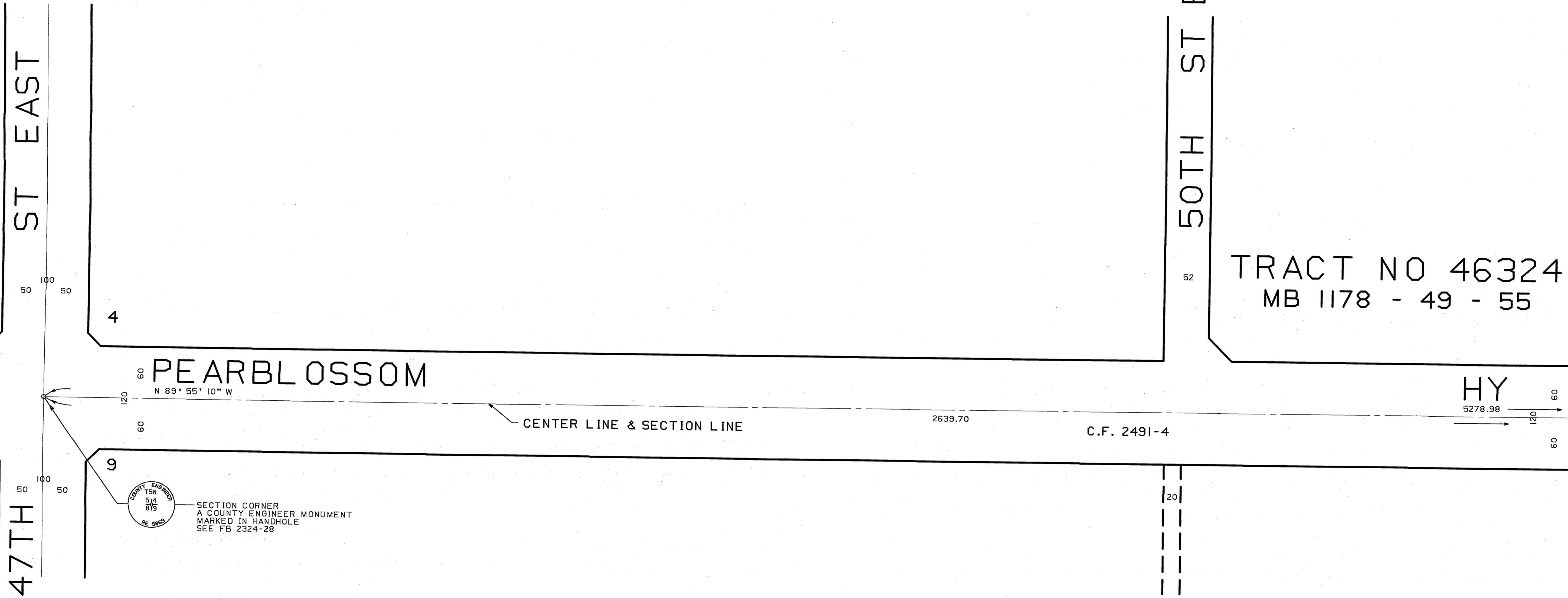


INDEX MAP NOT TO SCALE



PEARBLOSSOM

47TH ST EAST

50TH ST EAST

TRACT NO 46324  
MB 1178 - 49 - 55

CENTER LINE & SECTION LINE

2639.70

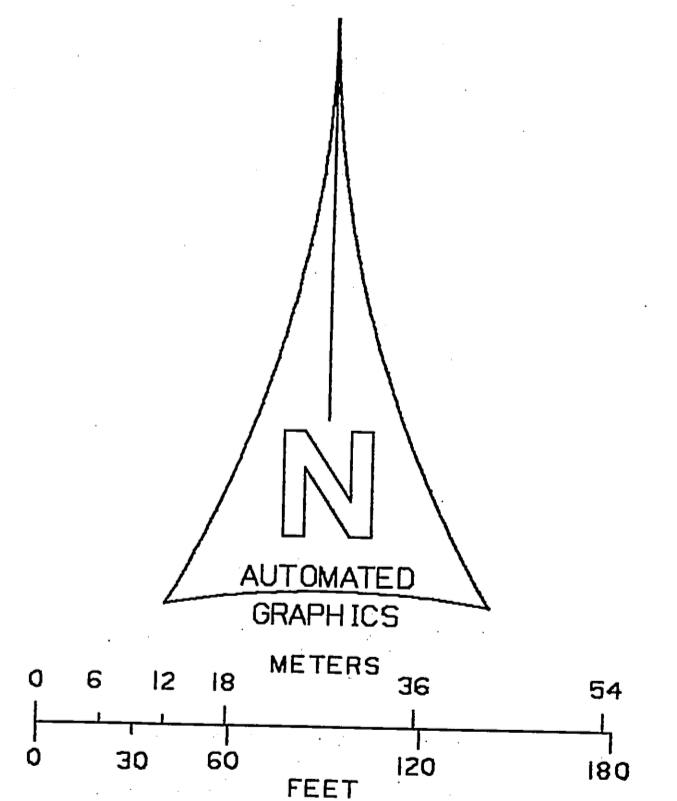
C.F. 2491-4

HY

5278.98

MATCH LINE  
SEE SHEET 2 OF 3 SHEETS

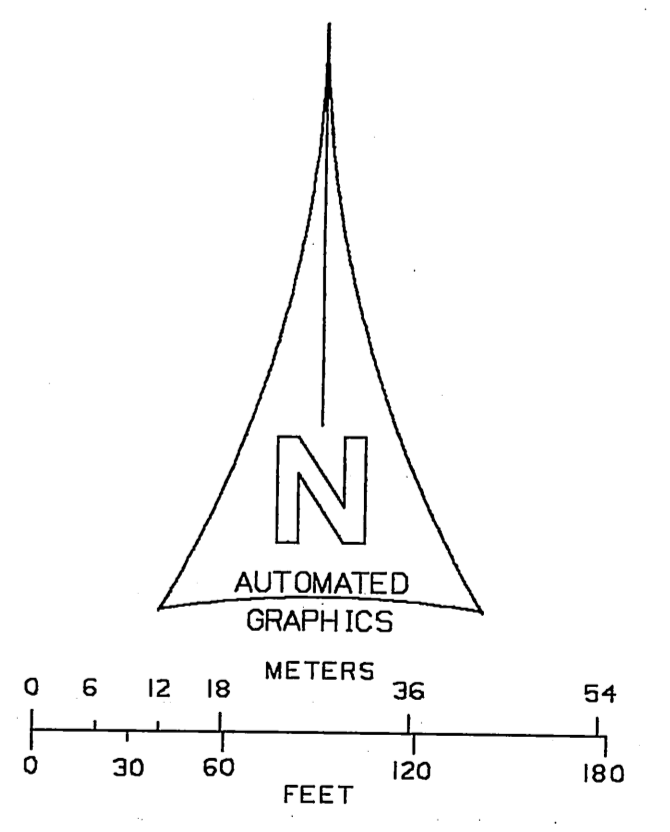
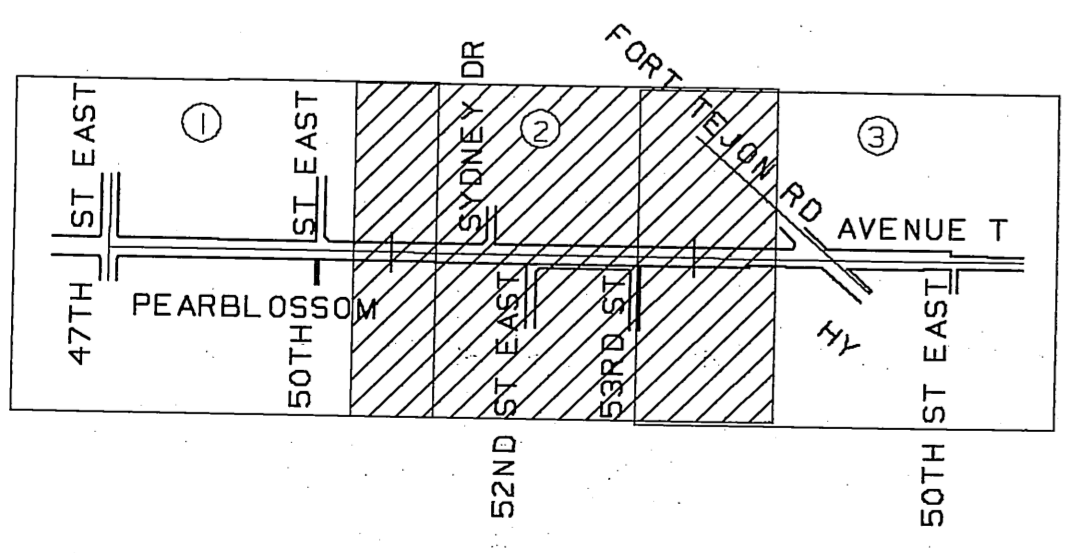
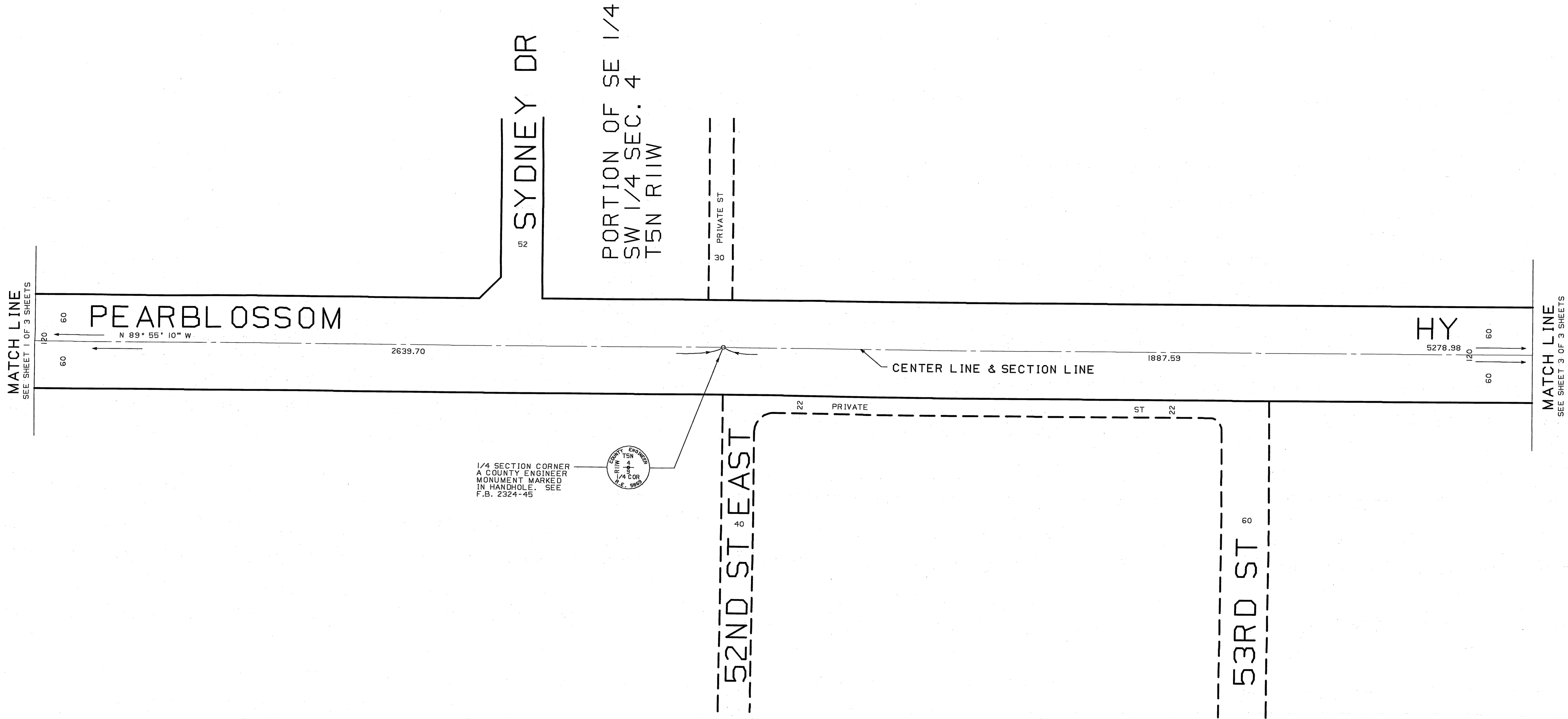
SECTION CORNER  
A COUNTY ENGINEER MONUMENT  
MARKED IN HANDHOLE  
SEE FB 2324-28



NOTE:

THIS MAP SUPERSEDES THE 60' WIDTH FROM CENTERLINE OF PEARBLOSSOM HIGHWAY AS SHOWN ON C.S.B. 2858 A3 OF A4 WITHIN THE LIMITS SHOWN HEREIN TO 60' WIDTH FROM CENTERLINE PER SECTION 22.48.200.B.19 OF THE PLANNING AND ZONING CODE.

COUNTY OF LOS ANGELES <b>DEPARTMENT OF PUBLIC WORKS</b> T. A. IDEMANSON - COUNTY ENGINEER PREPARED BY MAPPING AND PROPERTY MANAGEMENT DIVISION AND SURVEY DIVISION SURVEYED BY <u>J.S. COATES</u> CHECKED BY <u>R. HILARIO</u> DRAWN BY <u>J. BURGESSE</u>	<b>MAP OF</b> <b>PEARBLOSSOM HIGHWAY</b> FROM 47TH STREET EAST TO FORT TEJON ROAD	COUNTY SURVEYOR'S MAP NO <b>B-5559</b> SHEET 1 OF 3 SHEETS FILED: <u>NOV 10</u> 19 <u>62</u> <u>Rosario Scalet</u> ASST. CHIEF, MAPP. & PRGP. MGT. SURVEYED NOV. 1962 - MAY 1963
		REFERENCE BEARINGS ARE BASED ON THE BEARING N 89° 55' 10" W OF THE CENTERLINE OF PEARBLOSSOM HIGHWAY AS SHOWN ON C.S.B. 2858



NOTE :  
 THIS MAP SUPERSEDES THE 50' WIDTH FROM CENTERLINE OF PEARLBLOSSOM HIGHWAY AS SHOWN ON C.S.B. 2858 A3 OF A4 WITHIN THE LIMITS SHOWN HEREIN TO 60' WIDTH FROM CENTERLINE PER SECTION 22.48.200.819 OF THE PLANNING AND ZONING CODE.

COUNTY OF LOS ANGELES <b>DEPARTMENT OF PUBLIC WORKS</b> T. A. TIDEMANSON - COUNTY ENGINEER PREPARED BY MAPPING AND PROPERTY MANAGEMENT DIVISION AND SURVEY DIVISION SURVEYED BY J.S. COATES CHECKED BY R. HILARIO DRAWN BY J. BURGESS	<b>MAP OF PEARLBLOSSOM HIGHWAY</b> <b>FROM 47TH STREET EAST TO FORT TEJON ROAD</b>	COUNTY SURVEYOR'S MAP NO <b>B-5559</b> SHEET 2 OF 3 SHEETS FILED: <i>Nov 10 1963</i> ASST. CHIEF MAP & PROP. MGT. SURVEYED NOV. 1962 - MAY 1963 REFERENCE F.B. 2324 C.S.B. 2858
	BASIS OF BEARINGS BEARINGS ARE BASED ON THE BEARING $N 89^{\circ} 55' 10'' W$ OF THE CENTERLINE OF PEARLBLOSSOM HIGHWAY AS SHOWN ON C.S.B. 2858	
	JOB NUMBER M332001	INDEX MAP NO 3025

A SPIKE, WASHER & TIN  
SEE STATE DIVISION OF  
HIGHWAYS. SEE F.B. 2324-118, 119

N 48° 45' 10" W  
FORT TEJON

PORTION OF SE 1/4  
SEC. 4 T5N R11W

MATCH LINE  
SEE SHEET 2 OF 3 SHEETS

PEARBLOSSOM HY

RD  
VARIES

AVENUE

N 89° 55' 10" W  
1887.59  
CENTER LINE & SECTION LINE

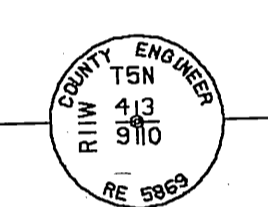
PROPOSED R/W LINE

A STANDARD STATE HIGHWAY  
BRASS CAP MONUMENT  
MARKED IN HANDHOLE.  
SEE F.B. 2324-46

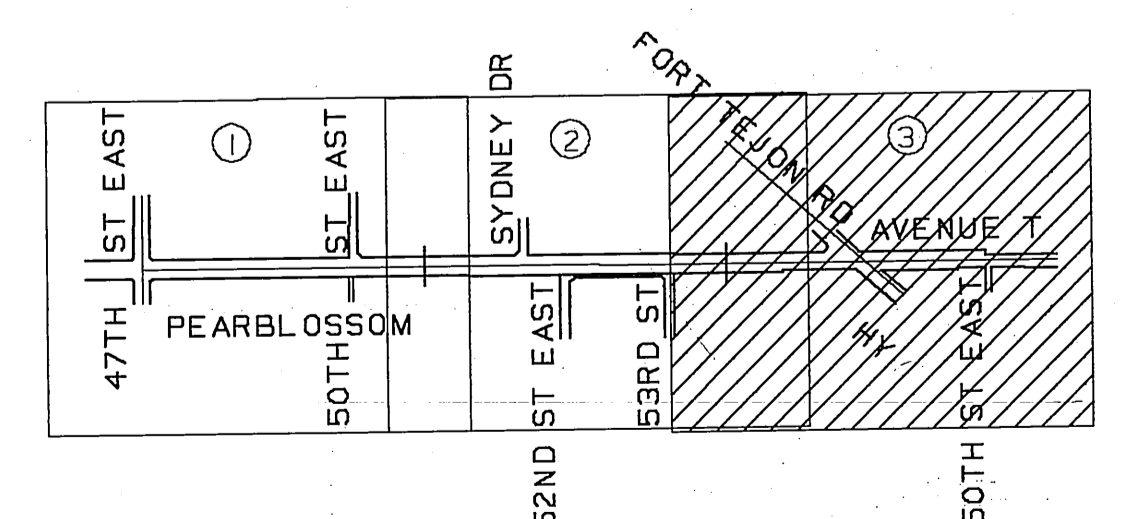


PEARBLOSSOM HY

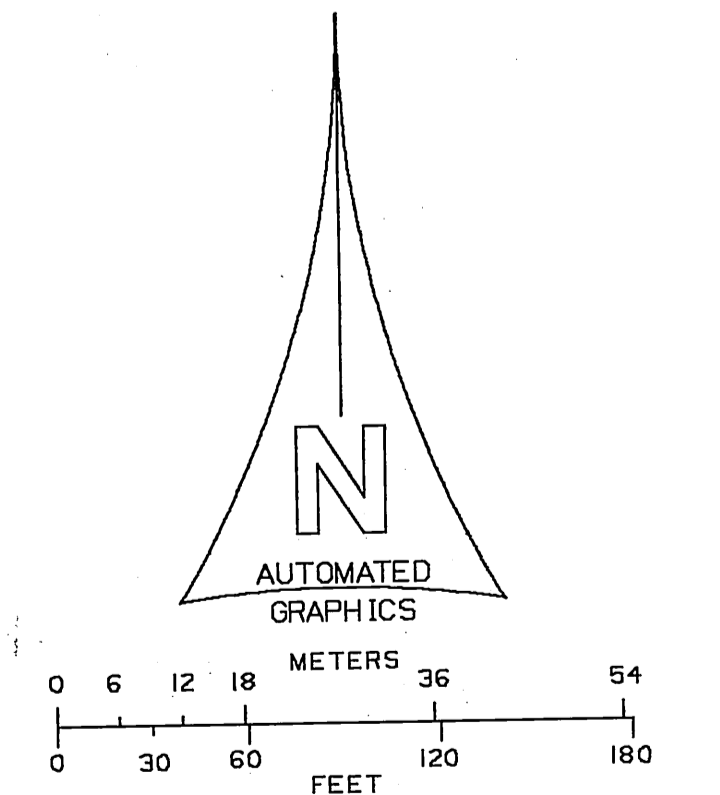
50TH ST EAST



SECTION CORNER  
A COUNTY ENGINEER MONUMENT  
MARKED IN HANDHOLE  
SEE F.B. 2324-46



INDEX MAP  
NOT TO SCALE



NOTE:  
THIS MAP SUPERSEDES THE 50' WIDTH FROM  
CENTERLINE OF PEARBLOSSOM HIGHWAY AS  
SHOWN ON C.S.B. 2858 AS OF 44' WITHIN THE  
LIMITS SHOWN HEREIN TO 60' WIDTH FROM  
CENTERLINE PER SECTION 22.48.200.B.15  
OF THE PLANNING AND ZONING CODE.

COUNTY OF LOS ANGELES <b>DEPARTMENT OF PUBLIC WORKS</b> T. A. TIDEMANSON - COUNTY ENGINEER PREPARED BY MAPPING AND PROPERTY MANAGEMENT DIVISION AND SURVEY DIVISION SURVEYED BY J.S. COATES CHECKED BY R. HILARIO DRAWN BY J. BURGES	<b>MAP OF</b> <b>PEARBLOSSOM HIGHWAY</b> <b>FROM 47TH STREET EAST</b> <b>TO FORT TEJON ROAD</b>		COUNTY SURVEYOR'S MAP NO <b>B-5559</b> SHEET 3 OF 3 SHEETS FILED: <i>Nov 10 1963</i> <i>Boyd Stender</i> ASST. CHIEF, MAPS & PROP. MGT. SURVEYED NOV. 1962 - MAY 1963 REFERENCE F.B. 2324 C.S.B. 2858
	BASIS OF BEARINGS BEARINGS ARE BASED ON THE BEARING N 89° 55' 10" W OF THE CENTERLINE OF PEARBLOSSOM HIGHWAY AS SHOWN ON C.S.B. 2858		JOB NUMBER M8932001 INDEX MAP NO 3025 PART NAME: CALSR.3025.C889999