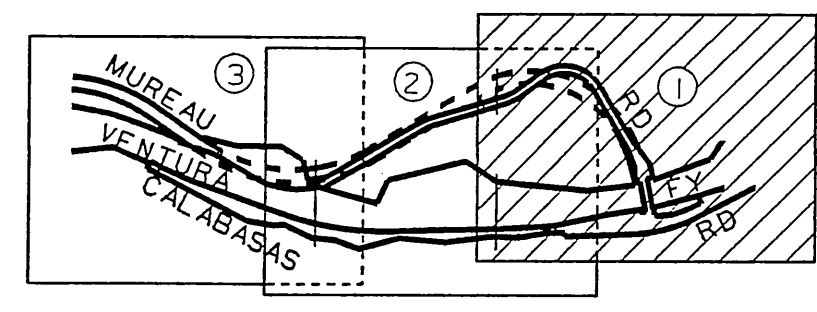


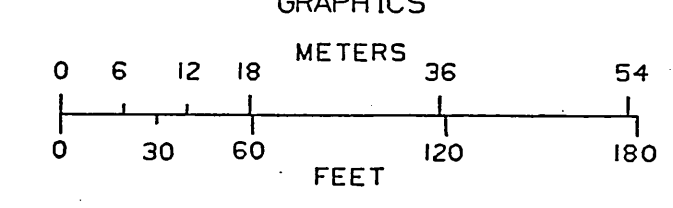
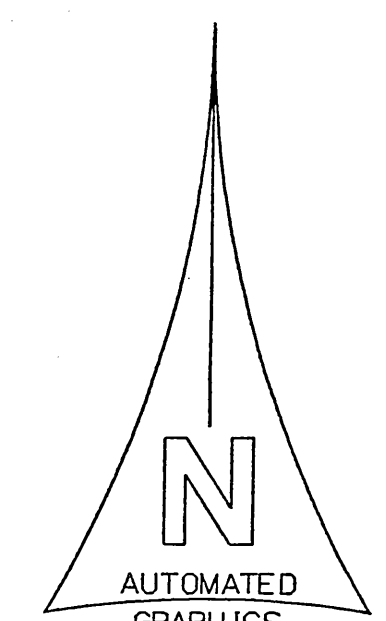
MATCH LINE
SEE SHEET 2 OF 3 SHEETS

MATCH LINE
SEE SHEET 2 OF 3 SHEETS



INDEX MAP
NOT TO SCALE

NOTE:
1. THE ALIGNMENT AND PROPOSED RIGHT OF WAY SHOWN HEREON SUPERSEDES THAT SHOWN ON C.S.B. 3063 WITHIN THE LIMITS SHOWN HEREON.



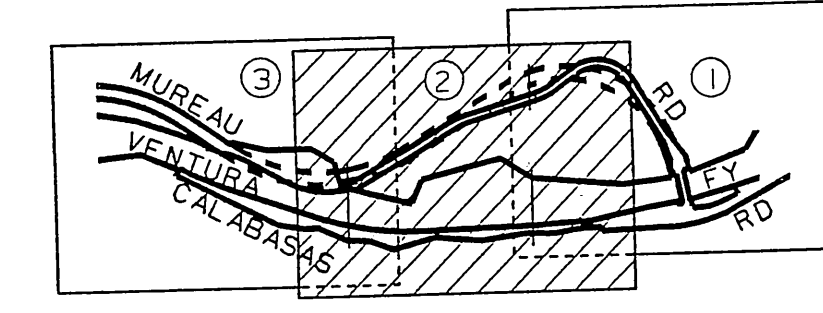
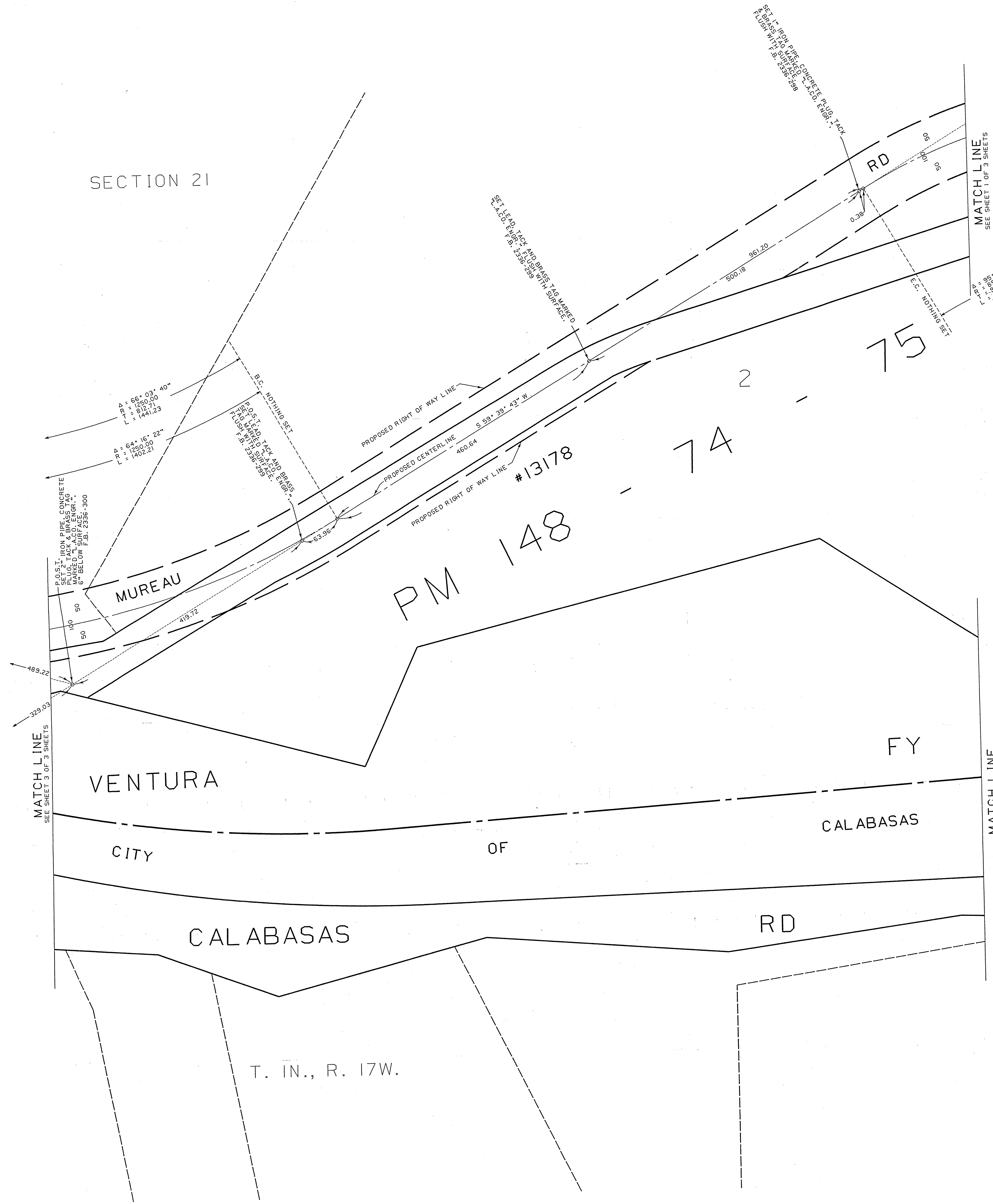
COUNTY OF LOS ANGELES
DEPARTMENT OF
PUBLIC WORKS
T. A. TIDEMANSON - COUNTY ENGINEER
PREPARED BY
MAPPING AND PROPERTY MANAGEMENT
DIVISION
AND
SURVEY DIVISION
SURVEYED BY W. J. VOGEL
CHECKED BY G. L. BARR
DRAWN BY J. L. BURGESS

MAP OF
MUREAU ROAD
FROM CALABASAS RD. TO THE
SOUTHEASTERLY CORNER OF
TR 39509, M.B. 1119-38/66
BASIS OF BEARINGS
BEARINGS ARE BASED ON THE PROPOSED CENTERLINE
OF MUREAU RD. 'S 59° 39' 43" W' AS SHOWN ON
COUNTY SURVEYORS MAP NO. B-3063

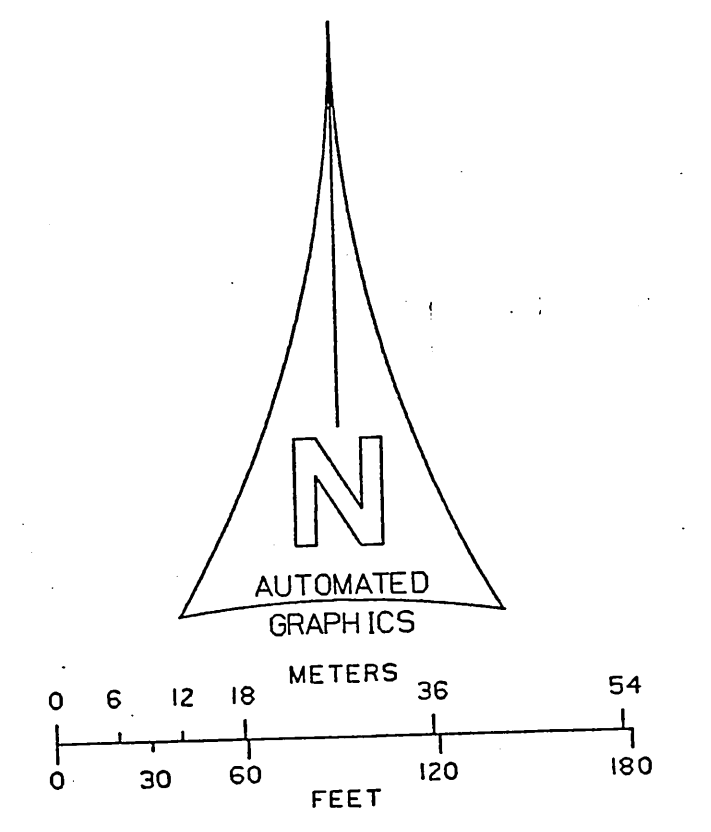
COUNTY SURVEYOR'S MAP NO
B-5566
SHEET 1 OF 3 SHEETS
FILED February 1, 1966
W. J. VOGEL
ASSISTANT COUNTY ENGINEER
NOVEMBER, 1966
REFERENCE
C.S.B. 3063
JOB NUMBER INDEX MAP NO
M8932001 159-077
PART NAME: C46R1607.C09566

C.2.B.-2200

SECTION 21



NOTE:
 1. THE ALIGNMENT AND PROPOSED RIGHT OF WAY SHOWN HEREON SUPERSEDES THAT SHOWN ON C.S.B. 3063 WITHIN THE LIMITS SHOWN HEREON.

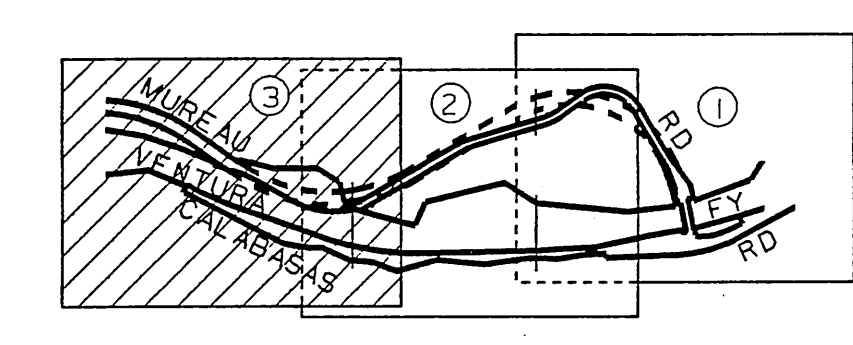
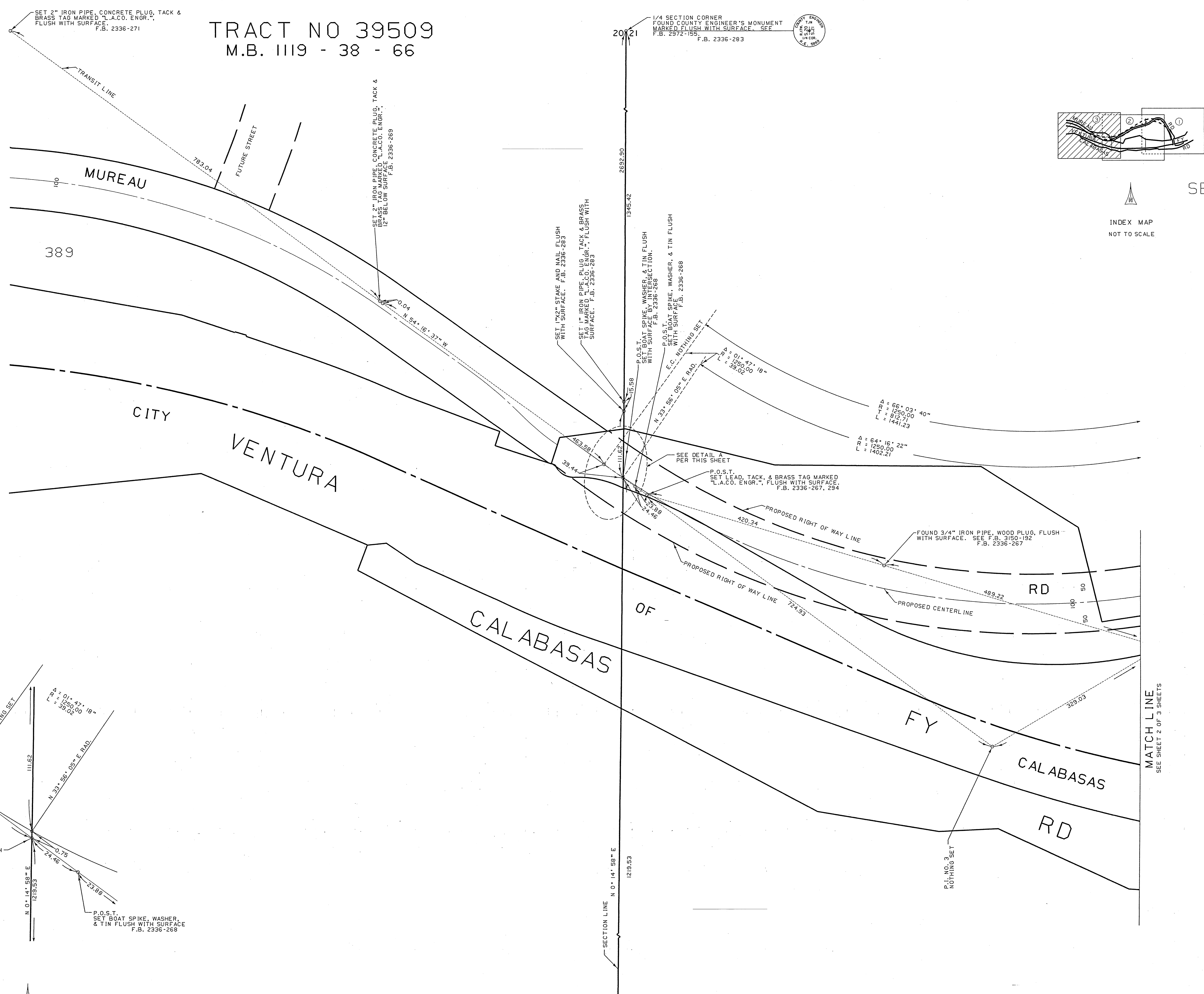


COUNTY OF LOS ANGELES DEPARTMENT OF PUBLIC WORKS T. A. YIDEMANSON - COUNTY ENGINEER PREPARED BY MAPPING AND PROPERTY MANAGEMENT DIVISION AND SURVEY DIVISION SURVEYED BY - W.J. VOGEL CHECKED BY - S. GARR DRAWN BY - J. BURRESS	MAP OF MUREAU ROAD FROM CALABASAS RD. TO THE SOUTHEASTERLY CORNER OF TR 39509, M.B. 1119-38/66		COUNTY SURVEYOR'S MAP NO B-5566 SHEET 2 OF 3 SHEETS
	FILED: <i>[Signature]</i> , 1966 ASST. CHIEF MAPS & PROP. MGMT.		SURVEYED NOVEMBER, 1966
	BASIS OF BEARINGS BEARINGS ARE BASED ON THE PROPOSED CENTERLINE OF MUREAU RD. IS $59^\circ 39' 43''$ W AS SHOWN ON COUNTY SURVEYORS MAP NO. B-3063		REFERENCE C.S.B. 3063
	JOB NUMBER M8532001		INDEX MAP NO 159-077

C.2.B.-2200

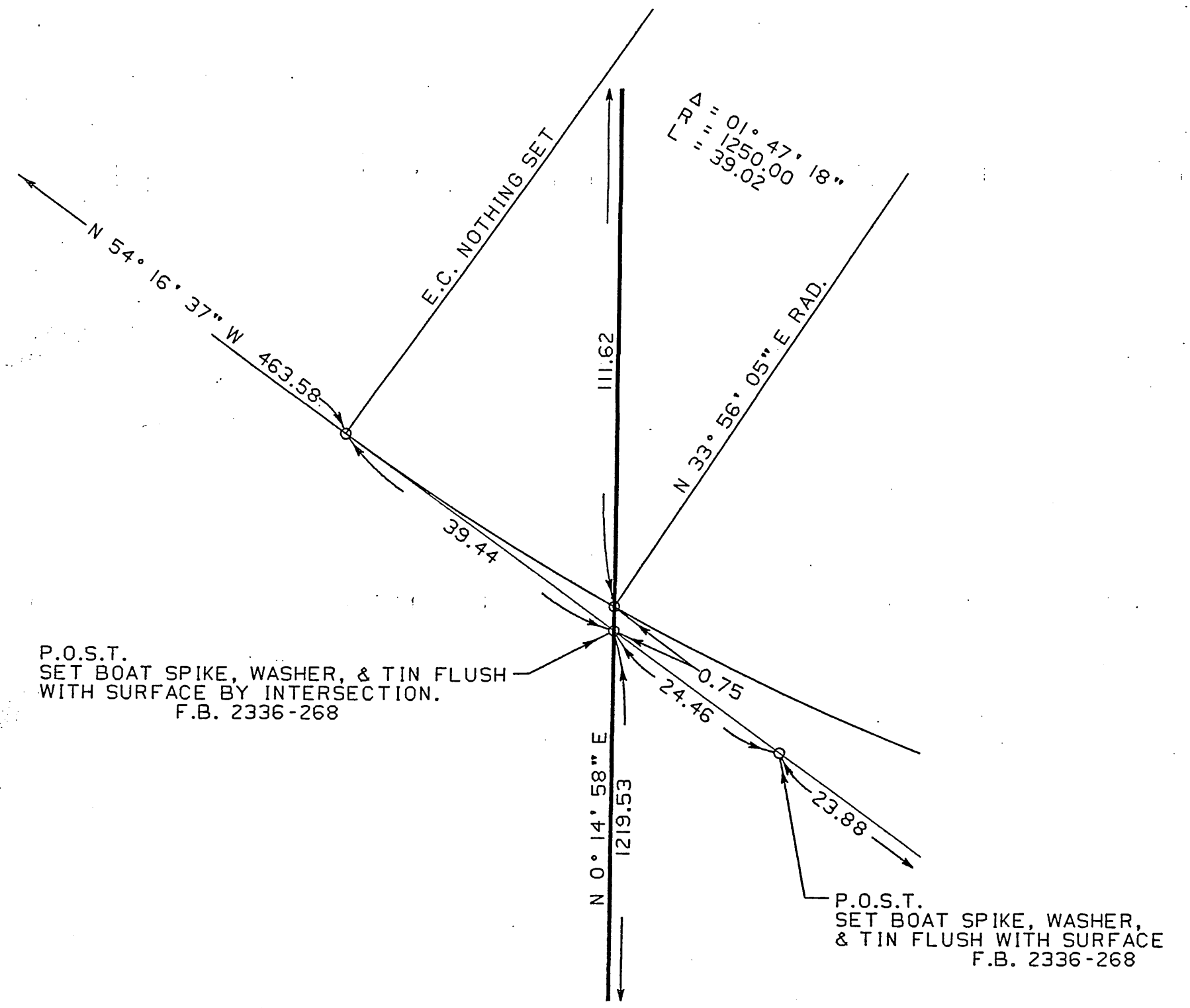
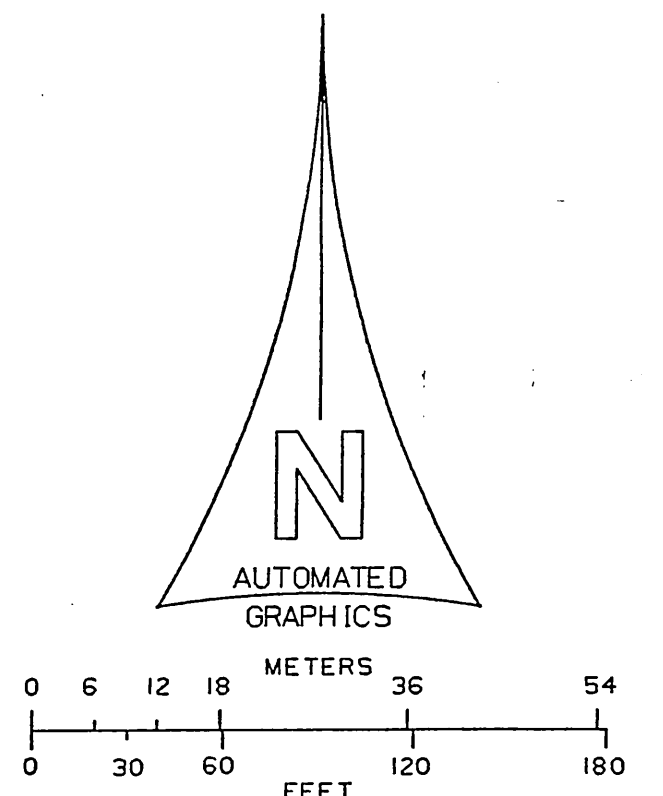
C.2.B.-2200

TRACT NO 39509
M.B. 1119 - 38 - 66



SECTION 21

NOTE:
1. THE ALIGNMENT AND PROPOSED RIGHT OF WAY SHOWN HEREON SUPERSEDES THAT SHOWN ON C.S.B. 3063 WITHIN THE LIMITS SHOWN HEREON.



SECTION CORNER
FOUND 4"x4" REDWOOD POST, BRASS TACK, SET IN CONCRETE 30" ABOVE SURFACE. SEE F.B. 2336-268.
REPLACED SAME WITH COUNTY ENGINEER'S MONUMENT MARKED: FLUSH WITH SURFACE. F.B. 2336-268, 284

COUNTY OF LOS ANGELES
DEPARTMENT OF PUBLIC WORKS
T. A. TIDEMANSON - COUNTY ENGINEER
PREPARED BY MAPPING AND PROPERTY MANAGEMENT DIVISION AND SURVEY DIVISION
SURVEYED BY M. J. VOIGT
CHECKED BY S. BARR
DRAWN BY J. BURGESS

MAP OF
MUREAU ROAD
FROM CALABASAS RD. TO THE SOUTHEASTERLY CORNER OF TR 39509, M.B. 1119-38/66

BASIS OF BEARINGS
BEARINGS ARE BASED ON THE PROPOSED CENTERLINE OF MUREAU RD. IS $59^{\circ} 39' 43'' W$ AS SHOWN ON COUNTY SURVEYORS MAP NO. B-3063

COUNTY SURVEYOR'S MAP NO
B-5566
SHEET 3 OF 3 SHEETS
FILED: February 1, 1973
John S. Barr
ASST. CHIEF MAPP. & PROP. MGT.
NOVEMBER, 1966
REFERENCE
C.S.B. 3063
JOB NUMBER
M8932001
INDEX MAP NO
159-077
PART NAME: C45UR107C05566

C.2.B.-2200