

Pt A Tract Corner (See CSB 5569 for establishment method) Nothing found or set. See PWB 1505-687

Pt B Tract Corner Nothing found or set. See PWB 1505-685

Pt C Intersection Centerline & Tract Line Prod Nothing found or set. See PWB 1505-685

Pt D Northeast Corner of Lot 48, Tract 9826 Established at record angle and distance from Pt 11245. Nothing found or set. See PWB 1505-625

Pt E CL EC Established holding record distances along the southeasterly R/W of Seminole Drive from Pt 14021, nothing set. See PWB 1505-624

Pt 173 Rancho Las Virgenes Station No. 10 Found 2" IP & Brass Cap per Tract 8228 & PWB 1505-390, 391. See PWB 1505-500

Pt 176 NW Corner Gov. Lot 6, Sec. 3, T1S R18W, SBM Found 1 1/2" IP & Cap up 2" per Tract 7374. See PWB 1505-503, 539

Pt 181 Section Corner Found LA Co Eng brass cap monument marked as shown. See PWB 1505-506, 640

Pt 198 174 Section Corner, Per Tract 8228 (See CSB 5568-3 for establishment method.) LA Co Eng brass cap monument marked as shown. See PWB 1505-506, 640

Pt 203 SW Corner Gov. Lot 6, Sec. 3, T1S R18W, SBM Established by proportion between the SW corner of Section 3 (Pt 181) & the South Corner Section 3 (Pt 198). Nothing set. See PWB 1505-505

Pt 262 CL Angle Pt, Cross Drive Found 1 1/2" IP & Brass Cap in Srd Co Well. See PWB 1505-551, CSB 5568-3 & CSB 5571

Pt 263 Tract Corner Found C-Notl & Tag LS 4034, no reference. Removed nail & tag and searched for original corner, nothing found. Accepted location as tract corner. Set Spike & DPW Washer. See PWB 1505-449, 559

Pt 264 CL Angle Pt Set LA Co Eng Brass Cap Mon In Well Mk'd RE 16485. See PWB 1505-559

Pt 268 CL Intersection Point Tract LA Co Eng Brass Cap Mon. In Well Mk'd RE 16485. See PWB 1505-561, 562 & CSB 5568-1

Pt 303 Tract Corner Accepted longitudinal location of Pt 13881 (2x2 Nail & Tag LS 2617). Set 1" IP & DPW Tag on section line, 0.40 ft. North of Pt 13881. See PWB 1505-469A, 642

Pt 306 CL Intersection Point Drive Found LA Co Eng Brass Cap Mon. In Well Mk'd RE 16485. See PWB 1505-559

Pt 307 CL PI (See CSB 5569 for establishment method.) Set Gear Spike & DPW Washer. See PWB 1505-645

Pt 308 CL PI (See CSB 5569 for establishment method.) Set Spike & DPW Washer. See PWB 1505-646

Pt 309 CL Angle Pt (See CSB 5569 for establishment method.) Set Spike & DPW Washer. See PWB 1505-449, 564, 648

Pt 310 CL Intersection Set Spike & DPW Washer. See PWB 1505-559, 559B

Pt 325 Tract Corner (See CSB 5569 for establishment method.) Set Spike & DPW Washer. See PWB 1505-652

Pt 401 Tract Corner Established at record distance from Pt 263 Set 2" IP & DPW Tag. See PWB 1505-598 & CSB 5571

Pt 402 Tract Corner Established at record angle & distance from Pt 401. Nothing found or set. See PWB 1505-625

Pt 403 Tract Corner Established by intersection, hold record angle from Pt 402, held Pt 504 and calculated offset to Pt D. Nothing found or set. See PWB 1505-625

Pt 404 Tract Corner Established at record distance south of Pt 403 Nothing found or set. See PWB 1505-626

Pt 405 CL Angle Pt Malibu Drive (Northeast) Set Pylon on Washer of Pt 505. See PWB 1505-626

Pt 406 Tract Corner Nothing set. See PWB 1505-627, CSB 5571 & CSB 5572

Pt 407 CL Angle Pt Malibu Drive 2" & DPW Tag In Srd Co Well. See PWB 1505-627 & CSB 5571

Pt 501 CL INT Set Spike & DPW Washer on 1". See PWB 1505-599B

Pt 502 CL PI Set Spike & DPW Washer. See PWB 1505-624

Pt 503 CL PI Set 2" IP & DPW Tag on 3". See PWB 1505-624

Pt 504 Tract Corner Established at record distance from Pt 509 Nothing found or set. See PWB 1505-624

Pt 505 CL Angle Pt, Malibu Drive (Southwest) Set Spike & DPW Washer. See PWB 1505-626

Pt 506 CL INT Set 2" IP & DPW Tag. See PWB 1505-32, 52

Pt 507 CL PD Set 2" IP & DPW Tag. See PWB 1505-32, 52

Pt 508 CL EC Nothing found or set. See PWB 1505-52

Pt 509 Tract Corner, R/W BC Nothing found or set. See PWB 1505-52

Pt 510 Tract Corner, R/W EC Established at record angle from the southeasterly line of Tract 9826 and record distance from Pt 511. Nothing found or set. See PWB 1505-52

Pt 511 Tract Corner Found 2" x 2" Nail on 8" per RS 116-14. Accepted as tract corner, replaced with 2" IP & DPW Tag on 3". See PWB 1505-32, 52

Pt 512 Tract Corner Found 1 1/2" IP & Tag LS 2617 per PWB 1505-358 & RS 116-14. Accepted as tract corner. See PWB 1505-471A, 658

Pt 513 End of CL Seminole Drive at Tract Line Set Small Spike in Lead on large boulder. See PWB 1505-658

Pt 514 Tract Corner Established at record distance southeasterly of Pt 11484. Set 2" IP & DPW Tag. See PWB 1505-659

Pt 515 Tract Corner Established at record distance northeasterly of point 514. Set 2" IP & DPW Tag up 2". Found 2x2 (NS) 27'00"E 2.85 ft. from Pt 515. See PWB 1505-469A, 642

Pt 516 CL PI Established by intersection holding Pts 11245 & 11268 to the northeast & a 15.00 ft offset to Pts 512 & 14026 to the southwest. Set 2" IP & DPW Tag in Srd Co Well. See PWB 1505-661, 662

Pt 517 CL Intersection / ROST Established at record distance from Pt 516 Set Spike & DPW Washer. See PWB 1505-661, 662

Pt 518 CL Intersection Established by proportion between Pts 513 & 517 Set 2" IP & DPW Tag In Srd Co Well. See PWB 1505-664

Pt 519 CL PI Set Spike & DPW Washer. See PWB 1505-665

Pt 520 CL PI Set Spike & DPW Washer. See PWB 1505-666

Pt 521 CL BC Set 2" IP & DPW Tag on 6". See PWB 1505-667

Pt 522 Tract Corner Established on section line at record distance east of Pt 303. Set 2" IP & DPW Tag. See PWB 1505-469A, 642

Pt 523 CL EC Set 2" IP & DPW Tag. See PWB 1505-667

Pt 524 CL PD Set Spike & DPW Washer. See PWB 1505-663

Pt 530 Point on Tract Line Set 1" IP & DPW Tag. See PWB 1505-658

Pt 601 Tract Corner Original 2" IP & Cap per Tract 9757. See PWB 1505-53 & CSB 5572

Pt 10841 Found C-Notl, no reference. See PWB 1505-645

Pt 10875 Found 2x2 & Tag LS 6385, no reference. See PWB 1505-645

Pt 10879 Found 2x2 & Tag LS 6385, no reference. See PWB 1505-646, 647

Pt 10880 Found Rebar & Cap LS 3927, no reference. See PWB 1505-646, 647

Pt 10886 Found Cotton Spindle, no reference. See PWB 1505-646, 647

Pt 11245 CL PD & Lot Line Prod Found Spike & Washer LS 4051 per PWB 1505-358. See PWB 1505-660

Pt 11268 CL PD & Lot Line Prod Found Spike & Washer LS 4051 per PWB 1505-358. See PWB 1505-661, 662

Pt 11403 Found 1 1/2" IP & Tag LS 2617 no reference. See PWB 1505-666

Pt 11404 Found 1" IP & Tag LS 2617 no reference. See PWB 1505-661, 662

Pt 11407 Found 1 1/2" IP & Tag LS 2617 no reference. See PWB 1505-667

Pt 11425 Found 1 1/2" IP & Tag LS 2617 no reference. See PWB 1505-664

Pt 11463 Found 1 1/2" IP & Tag LS 2617 up 2" no reference. See PWB 1505-665

Pt 11464 Found 1 1/2" IP, open up 10" no reference. Filled pipe with concrete & set DPW Tag in center. (See 08'36" W 12.47 ft. from Pt 519). See PWB 1505-665

Pt 11469 Found 1" IP & Tag LS 2430 no reference. See PWB 1505-665

Pt 11482 Northwest Corner Lot 33 Tract 9826 Found 1" IP & Tag LS 2617, no reference. See PWB 1505-470A, 659

Pt 11483 Found 1" IP & Tag LS 2617, no reference. 0.22 ft. west of tract line. See PWB 1505-470A, 659

Pt 11484 Northwest Corner Lot 33 Tract 9826 Found 1x2 & Tag LS 2617, no reference. See PWB 1505-470A, 659

Pt 11485 Found 1" IP & Tag LS 2430 no reference. See PWB 1505-666

Pt 11486 Found 1 1/2" IP & Tag LS 2617 no reference. See PWB 1505-666

Pt 11563 Found C-Notl in boulder, no reference. See PWB 1505-471A, 658

Pt 13881 Found 2x2 Nail & Tag LS 2617, no reference. The longitudinal position of this point was held to establish Pt 303 (Tract Corner), on section line, 0.40 ft. North of Pt 13881. See PWB 1505-469A, 642

Pt 14014 Tract Corner Found 1" IP & Tag RCE 28418, no reference. See PWB 1505-684, 686

Pt 14021 Northwest Corner Lot 48 Tract 9826 Found 1" IP & Tag LS 4051 per PWB 1505-358. See PWB 1505-660

Pt 14022 Northwest Corner Lot 47 Tract 9826 Found Lead & Tag LS 4051 per PWB 1505-358. (See 11'30'00"E 15.09 ft. from Pt 11268). See PWB 1505-661, 662

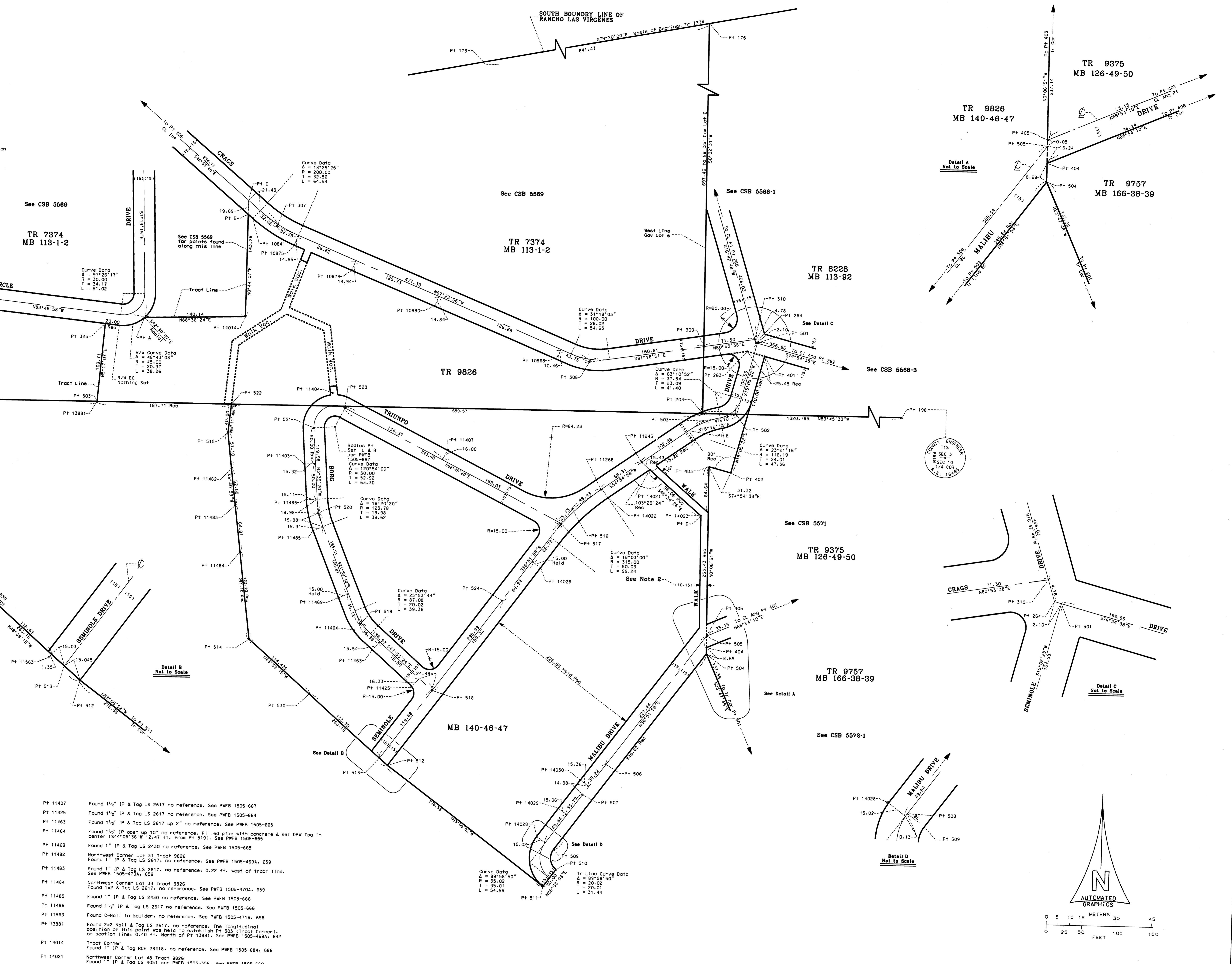
Pt 14023 Found 1 1/2" IP & Tag LS 2617, per PWB 1505-358, N27'36" W 0.43 from Pt D. See PWB 1505-625

Pt 14026 Northwest Corner Lot 45 Tract 9826 Found 1" IP & Tag LS 2617 per PWB 1505-358, & RS 116-14. See PWB 1505-472, 663

Pt 14028 Found Nail & Tag LS 2618 per RS 116-14. See PWB 1505-52

Pt 14029 Found 2x2 IP & Wood Plug per RS 116-14. (Tag LS 4848 missing). See PWB 1505-52

Pt 14030 Found 2x2 & Tag LS 2618 per RS 116-14. See PWB 1505-52



For R/W encroachments see SDFM 43.5T

COUNTY OF LOS ANGELES DEPARTMENT OF PUBLIC WORKS JAMES A. MOYES - COUNTY ENGINEER PREPARED BY SURVEY DIVISION	MAP OF <b>MALIBU LAKE          AREA CENTERLINE</b> TR 9826		COUNTY SURVEYOR'S MAP NO <b>B-5570</b> SHEET 1 OF 1 SHEETS FILED <i>May 17 2024</i> <i>James A. Moyes</i> ASST. DEPUTY DIRECTOR
	SURVEYED BY <b>VARIOUS</b> CHECKED BY <b>C. M. O'BRYAN</b> DRAWN BY <b>J. C. GUILD</b>		SURVEYED 1995 - DEC 1998 REFERENCE PWB 1405, PWB 1505
BASIS OF BEARINGS N79°20'00"E ALONG THE SOUTH BOUNDARY LINE OF RANCHO LAS VIRGENES PER TR 7374			JOB NUMBER S 016 INDEX MAP NO 144-057