

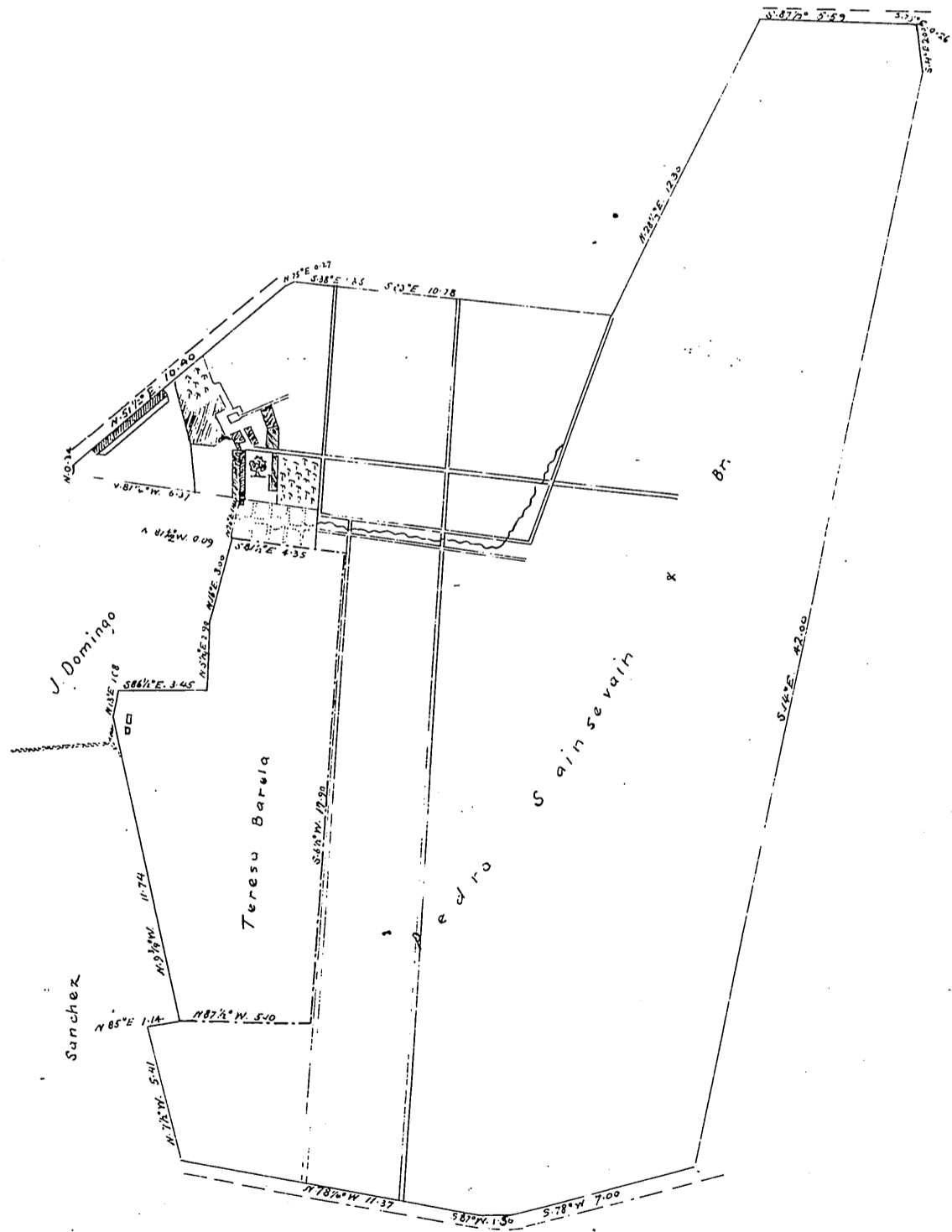
Scale 6 chains to the inch. Var. 12° 44' E.

Surveyed April 7<sup>th</sup> 1855 by G. Hansen Deputy County Surveyor of Los Angeles Co. Cal.

The courses are magnetic.

Area of Sainsevain + Br's tract  $74 \frac{92}{100}$  acres.

Area of Teresa Barela's tract  $11 \frac{25}{100}$  acres.



Recorded April 12<sup>th</sup> A.D. 1855, at 5<sup>33</sup> PM.  
at request of Joseph H. Blood Esq.

*Handwritten notes:*  
J. Domingo  
Teresa Barela