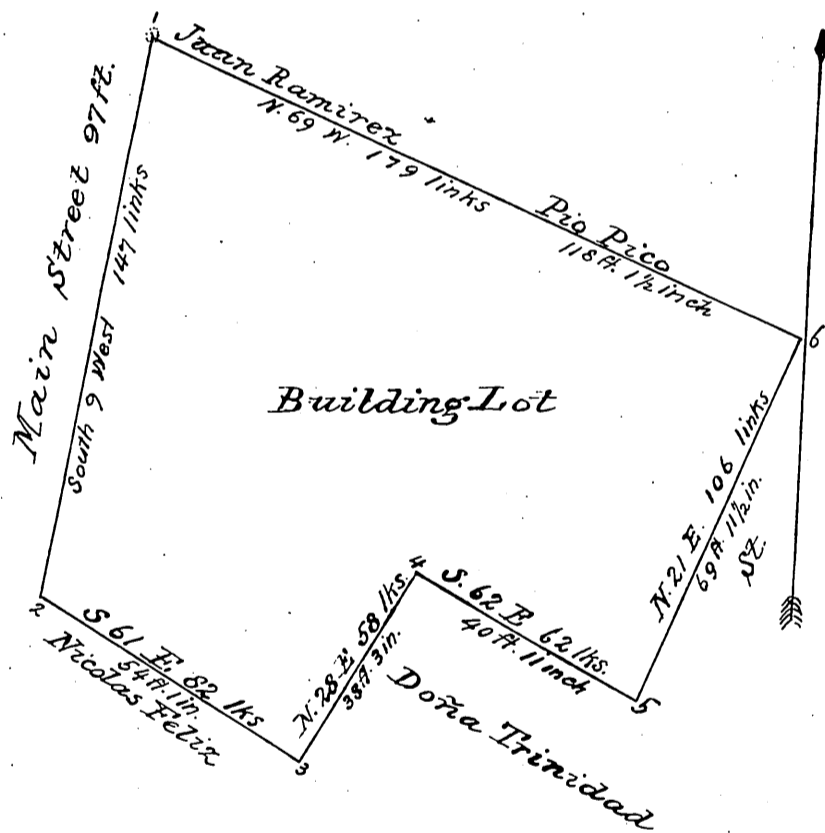


Survey of a lot  
 belonging to  
 DOÑA MARIA ANTA POLLORENO  
 a scale of 2 inches to a chain  
 Courses are Magnetic.



Surveyed by  
 Juan Y. Cot, Deputy  
 County Surveyor  
 of Los Angeles County  
 Cal.  
 August 13<sup>th</sup> 1857

Recorded March 17<sup>th</sup> 1860, at 12<sup>o</sup> M.  
 at request of Olvera.

*C. M. J.*