

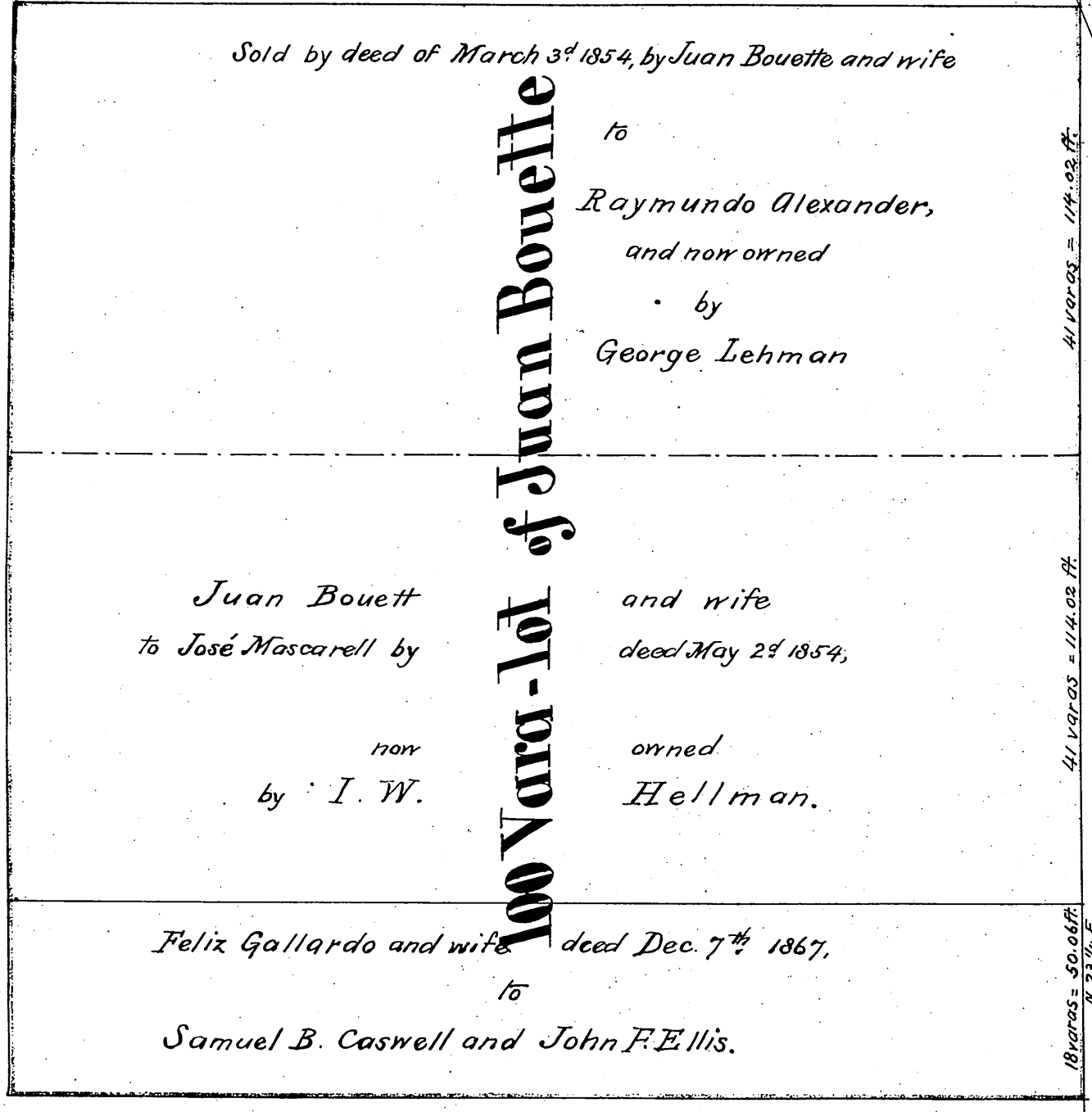
N.

MAP
 of a
 lot of land in Los Angeles City
 described
 in deed from Felix Gallardo et wife
 to
Samuel B. Caswell
 and
John F. Ellis,
 of date
 Dec. 7th 1867.
 Surveyed Dec 7th 1867,
 by
 G. Hansen County Sur.
 ass^d by L. Seibold
 scale 1 in. to 40 feet.
 courses magnetic.

Third St. 60 ft wide.

C.M. Benbrook to H. Dockweiler.
 County Rec. Book 9, page 118.
 Lot formerly owned by J.D. Hunter.
 40 ft. front on Main Str.

A. Ulyard to J. C. Kuhn,
 Book 1, page 616,
 51 1/2 ft. front on Main St.
 bounded North by J.D. Hunter
 and South by Juan Bouett.



Main Street 80 ft. wide.

State of California }
 County of Los Angeles } Office of the County Surveyor,
 I hereby certify the above to be a correct plat of
 a lot of land in the City of Los Angeles, described in
 a deed from Felix Gallardo et ux; to Samuel B. Caswell
 and John F. Ellis, of date Dec. 7, 1867.

Geo. Hansen, County Surveyor.

Recorded December 28th 1867, at 3¹² P.M.
 at request of Caswell & Ellis.

Copy
1867