

Los Angeles March 15<sup>th</sup> 1869

I certify this to be a correct plan of a survey executed by me under instructions received by me from John King Esq<sup>r</sup> of a tract of land, situated in Los Angeles City, California, fronting on Alameda Street and being part of two tracts formerly owned by and respectively known as the 'Temple' and 'Copely' Tract.

Frank Lecourreur  
Surveyor.

Recorded April 14<sup>th</sup> AD. 1869  
at 12<sup>15</sup> PM, at request of  
Phineas Banning

PROPOSED

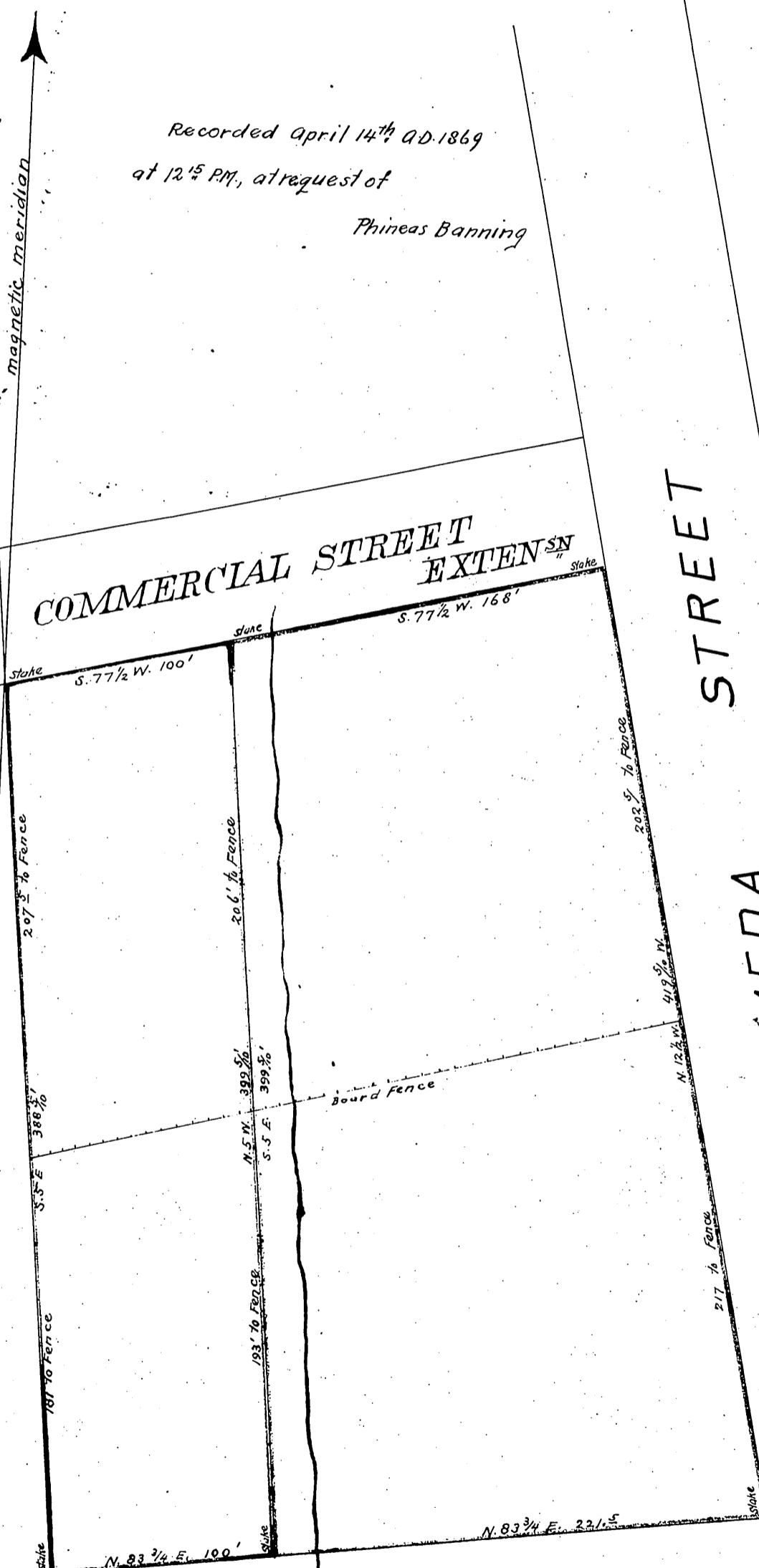
COMMERCIAL STREET  
EXTEN<sup>SN</sup>

STREET

ALAMEDA

Magnetic Courses  
Scale 60 feet to 1 inch

REQUENA



*Handwritten signature*

Sht. 2  
~~A-19~~  
A-902

DEEDS 12  
K.