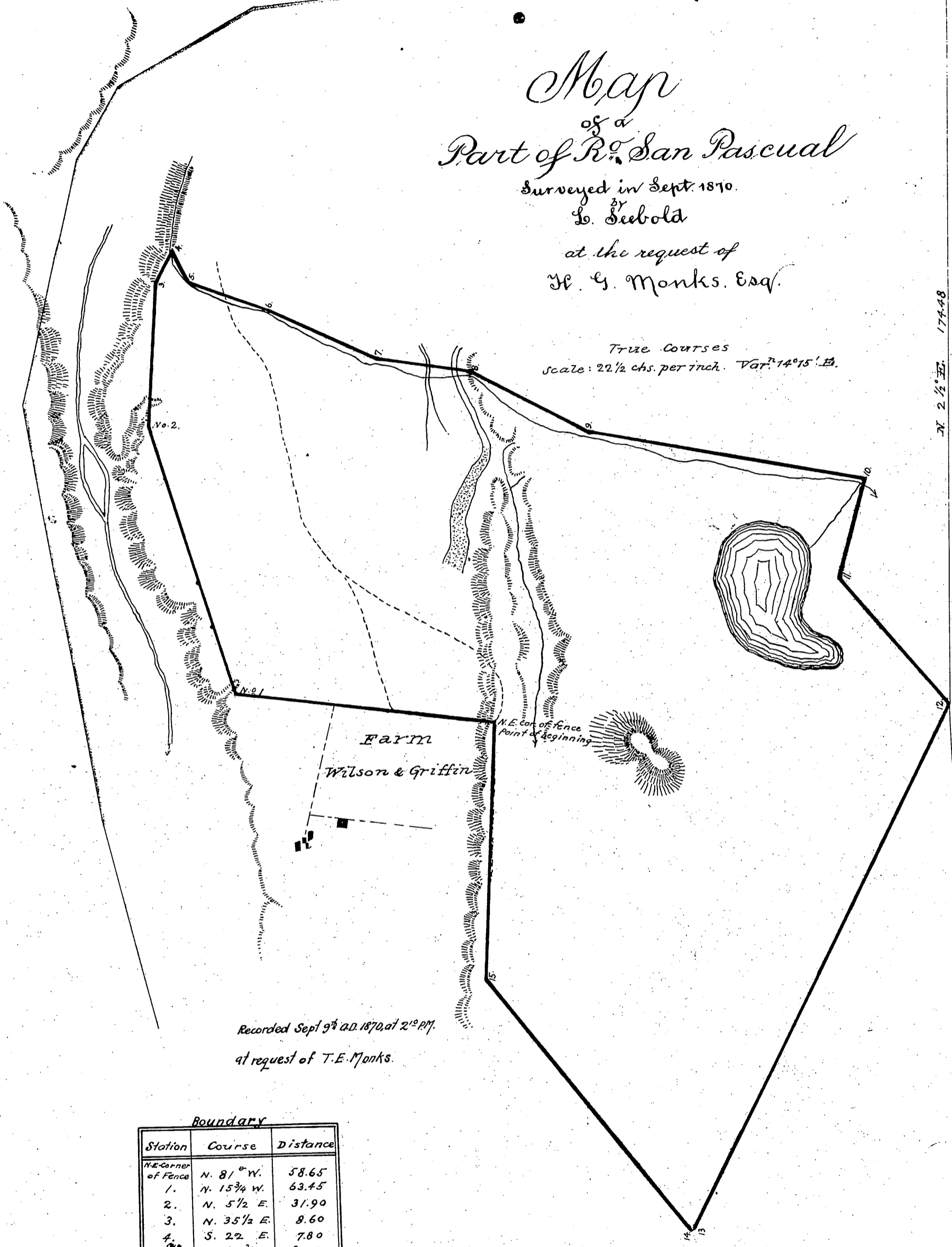


Map of a Part of R. San Pascual

Surveyed in Sept. 1870.
by
L. Seibold

at the request of
J. G. Monks, Esq.

True Courses
Scale: 22 1/2 chs. per inch. Var. 14° 15' E.



Recorded Sept 9th A.D. 1870, at 2^o PM.
at request of T.E. Monks.

Boundary

Station	Course	Distance
N.E. Corner of Fence	N. 81° W.	58.65
1.	N. 15 3/4 W.	63.45
2.	N. 5 1/2 E.	31.90
3.	N. 35 1/2 E.	8.60
4.	S. 22 E.	7.80
5.	S. 67 3/4 E.	20.00
6.	S. 65 E.	25.00
7.	S. 78 1/2 E.	22.13
8.	S. 59 E.	29.00
9.	S. 77 E.	64.75
10.	S. 15 1/4 W.	22.45
11.	S. 36 1/4 E.	37.18
12.	S. 30 W.	131.30
13.	S. 65 W.	1.00
14.	N. 35 W.	71.72
15.	N. 4 1/2 E.	57.12
		contains 1889.668 acres

Note by Recorder. The original map is on a scale of 15 chains, and is here reduced as above, to accommodate the size of this book

This Map accompanies Deed on page 440, ante, and was filed for record therewith.

Corrected
E.S.F.