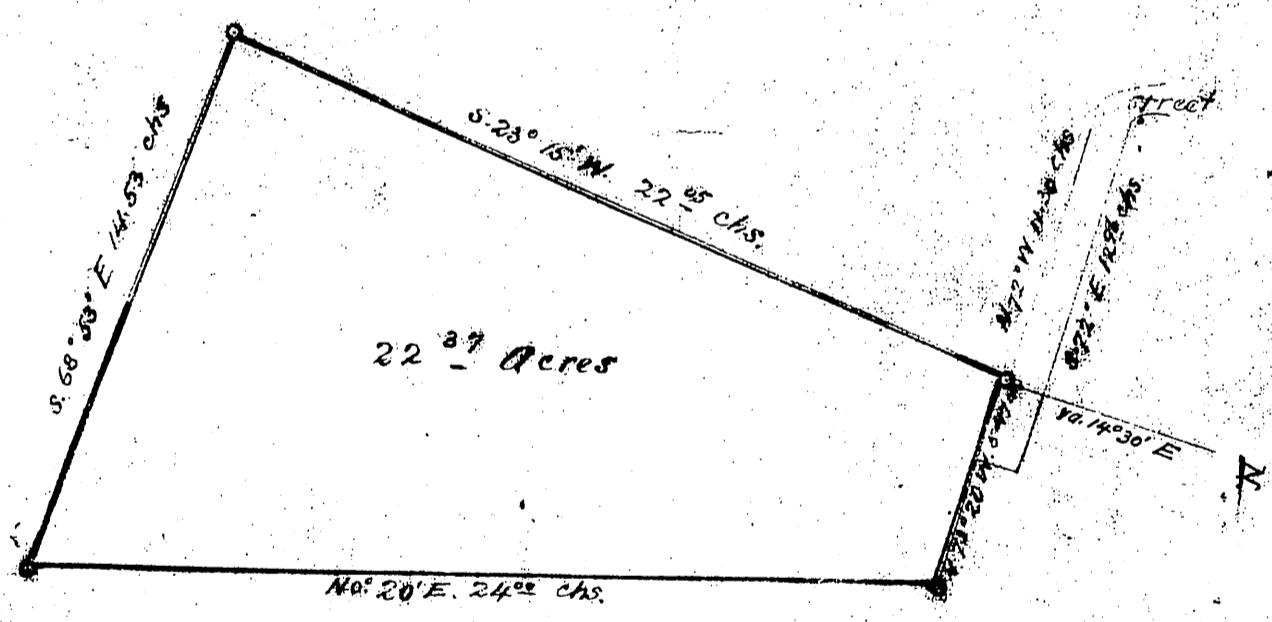


. 85

Los Angeles, Cal. Dec. 8th 1871

Survey made for R.M. Widney and L.S. Slouson Dec. 8, 1871; Began survey at NW. cor. of Manuel Coronel's land and the N.E. cor. Manuel Abila's land; said cor. is established by a stake in the fence running E. & W. between the above named parties and José Villalobos and Jose M. Villalobos and witnessed as follows, viz at a point S. 23 1/4° W. dist. 12 links from said stake, the N.E. cor. of Manuel Abila's house bore N. 75° 25' W. and the S.E. cor. of the same house bore N. 81° 15' W., thence

1. S. 23° 15' W. 22.05 chs.
2. S. 68° 53' E. 14.53 "
3. N. 0° 20' E. 24.00 "
4. N. 73° 20' W. 5.47 "



Goldsworthy and Higbee
Surveyors.

Recorded Dec. 16th 1873, at 3⁰⁰ P.M.
at request of Theo. L. Grott.

Compl'd
M.F.