

DM 30 - 586

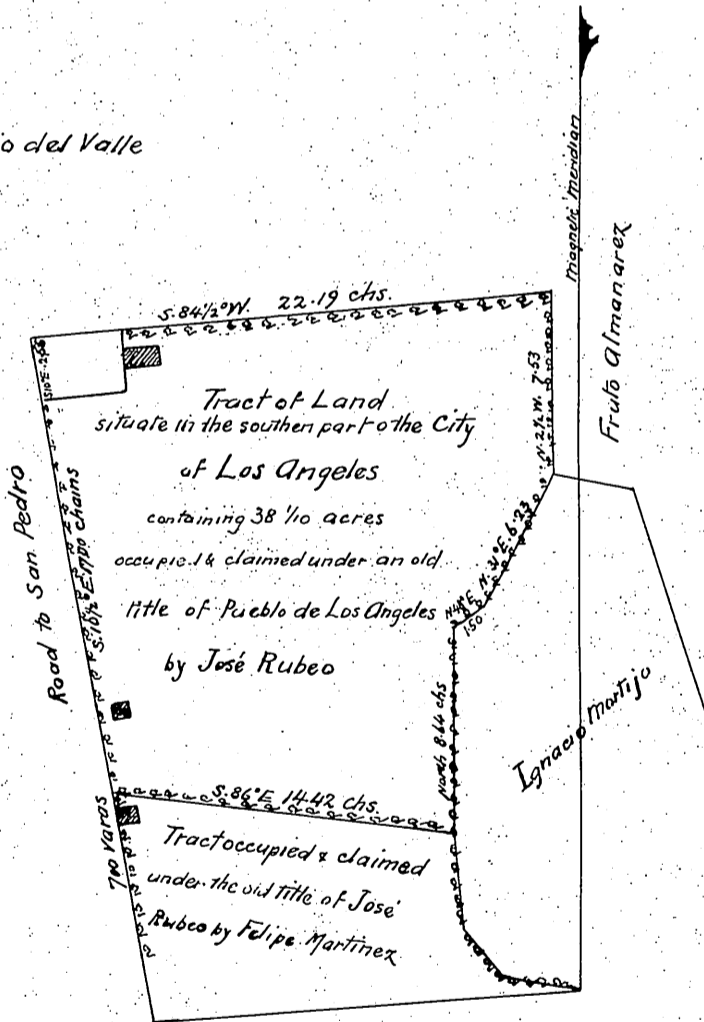
92

Thereby certify the above to be a correct  
tract of land containing 700 yds  
on San Pedro Road & occupied & claimed  
under an old title of the Pueblo de Los Angeles  
by José Rubeo & on his request surveyed  
on the 30<sup>th</sup> day of December 1853

I further certify that the line S. 86° 15' E. 14.42 chs.  
was agreed on in my presence by  
parties on the Northern boundary  
portion of said 700 yds tract  
José Rubeo had sold to Felipe M.  
Los Angeles City January 2<sup>d</sup> 1854

Geo. Hansen, Deputy Cor.  
of Los Angeles City

Ignacio del Valle



Amesbury  
1854