

DM 39 - 484

484

101

Compass bearings and distances with permanent monuments in it.

- 1 A 58 N 60 W to S E corner of Main St. and Morans Lane
  - 2 S 37° 0' 11" W 15.18 To corner of Briswaller and lands on E. side of Main St.
  - 3 S 20° 05' W 59.00 To Δ
  - 4 N 61 1/2° W 12.60 AS TO TAKE ON NORTH WEST CORNER OF WASHINGTON and MAIN STREETS
- From S E corner of Main St and Morans Lane the S E corner of Paul Kerns new track tail line bears N. 26° 10' E DIST 6.12 CHS.

Dorrey  
Main  
Street

S 58° E 12.60 c  
Briswaller

Magnetic courses variation 14° 45' E

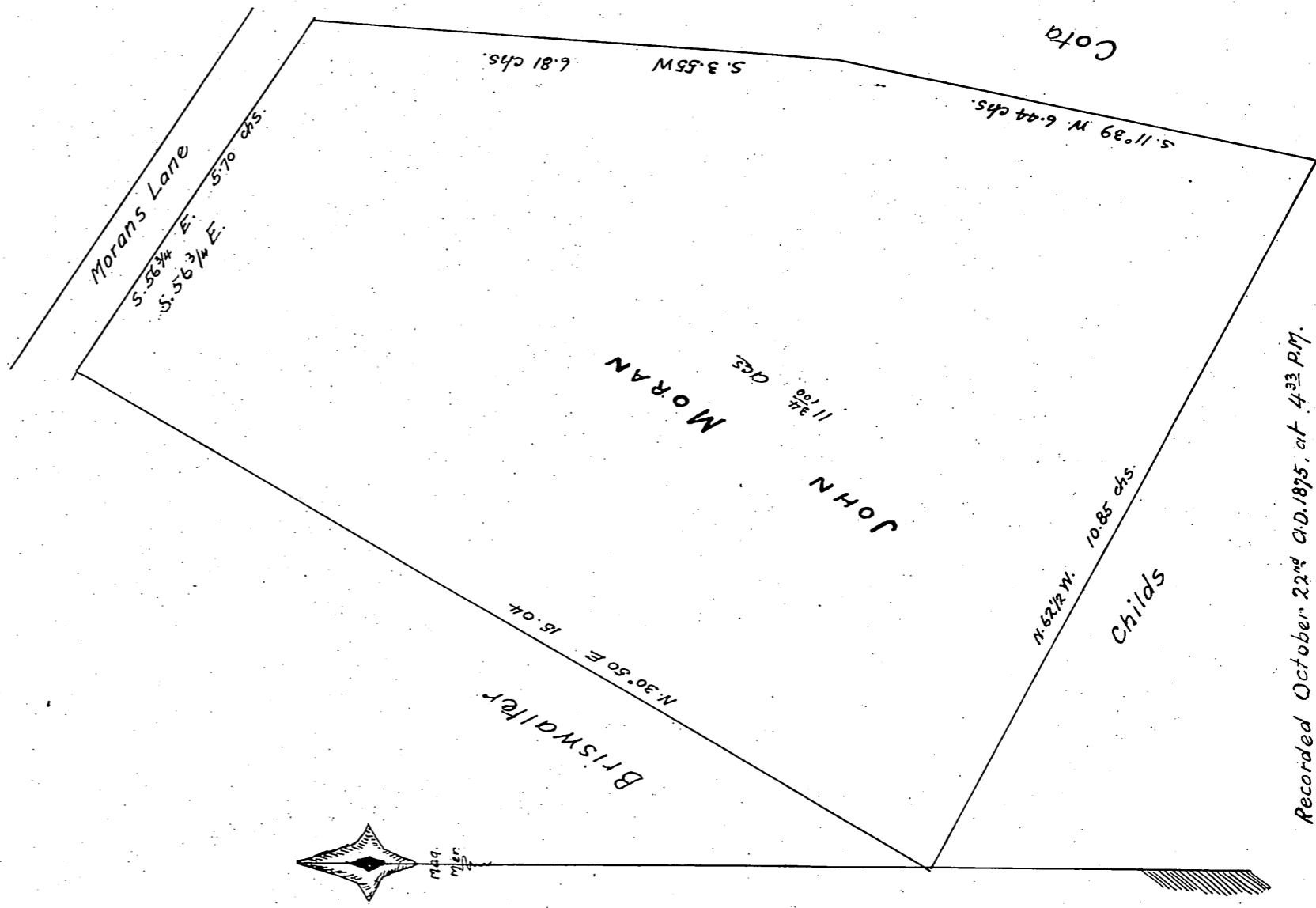
MAP  
OFA

TRACT OF LAND  
SITUATED ON MORAN'S LANE

OWNED BY

JOHN MORAN

containing 11 3/4 Acres.



Recorded October 22<sup>nd</sup> A.D. 1875, at 4:23 P.M.

at request of John Moran.