

106

Plot of Monte Vista

Situated in Los Angeles County California

Property of Chas Lindley Esq.

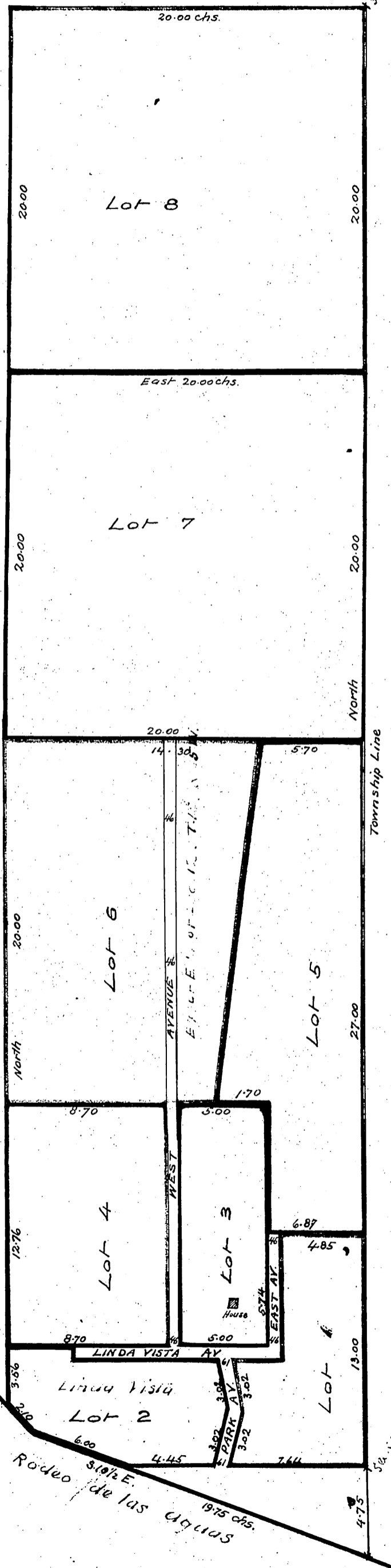
Surveyed Oct. 1875, by M. R. Peel.

True Courses Var. 14° 45' E.

Scale 6 chains to 1 inch.

The line between lots 3 and 5 altered so as to make right lines and right angles as indicated by the large ink line and the erasures - the new line being a continuation of the West line of East Avenue, made before filing map and before deed of Lot (1) one to Josephine Lindley - May 15th 1876

C. Lindley



SEC. 7 T. 1 S. R. 14

Recorded May 16th 1876, at 3²⁵ P.M.
at request of Chas. Lindley.

Avenues vacated See 83-47-48

Comp
1877