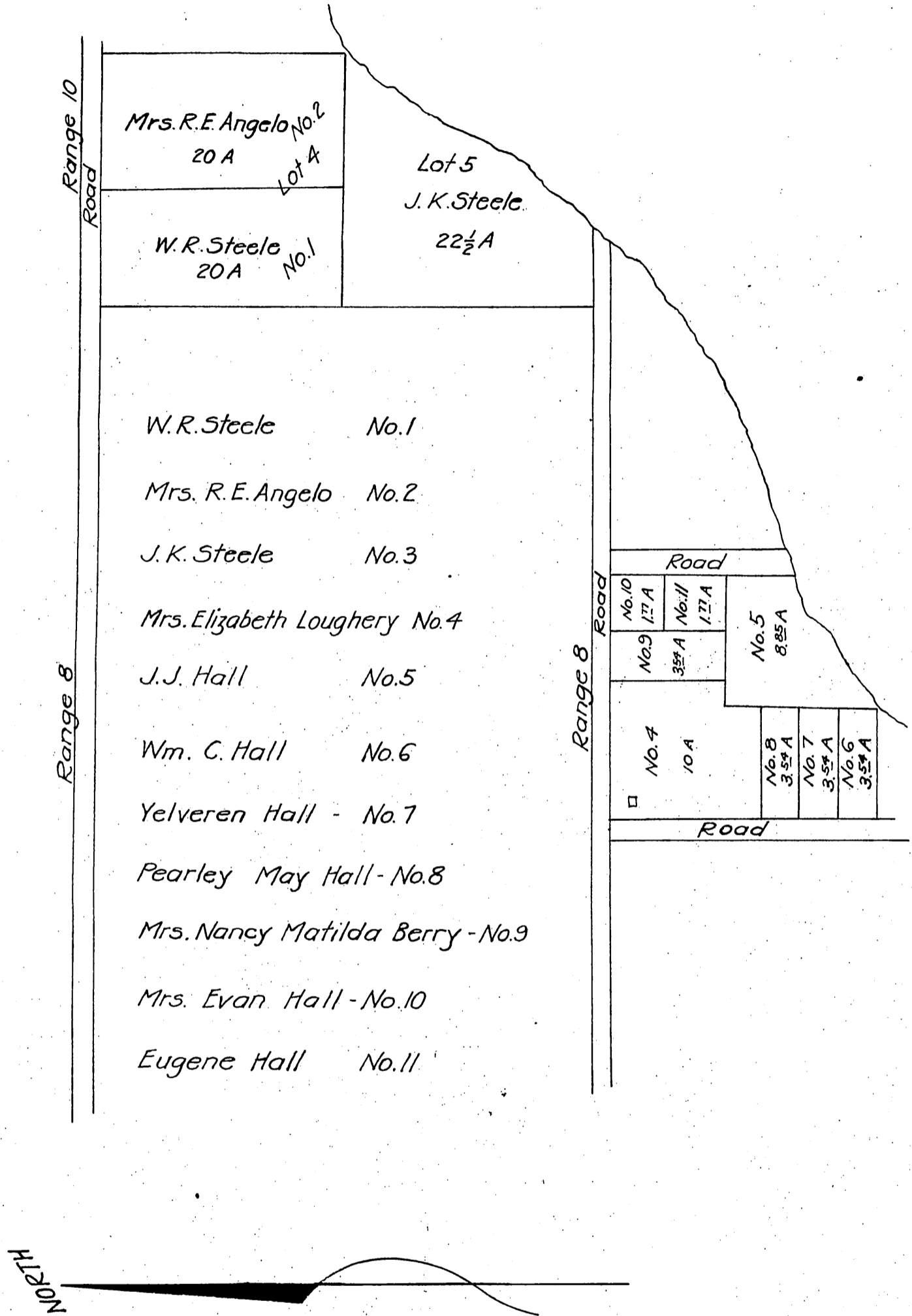


Partition of the estate of Mrs. Nancy Steele, deceased, situated in the Temple & Gibson Tract, L. A. County, Calif.



Recorded Oct. 10th, 1879 at 3:25 P.M.
at request of W.R. Steele.

Compton & Dominguez Rd. changed to Atlantic Drive - D:49-132
For State Hwy (Atlantic Ave.) see C.S.B-1129