

117

Exhibit "A"

Plat of a part of the Rancho

Paso de Bartolo.

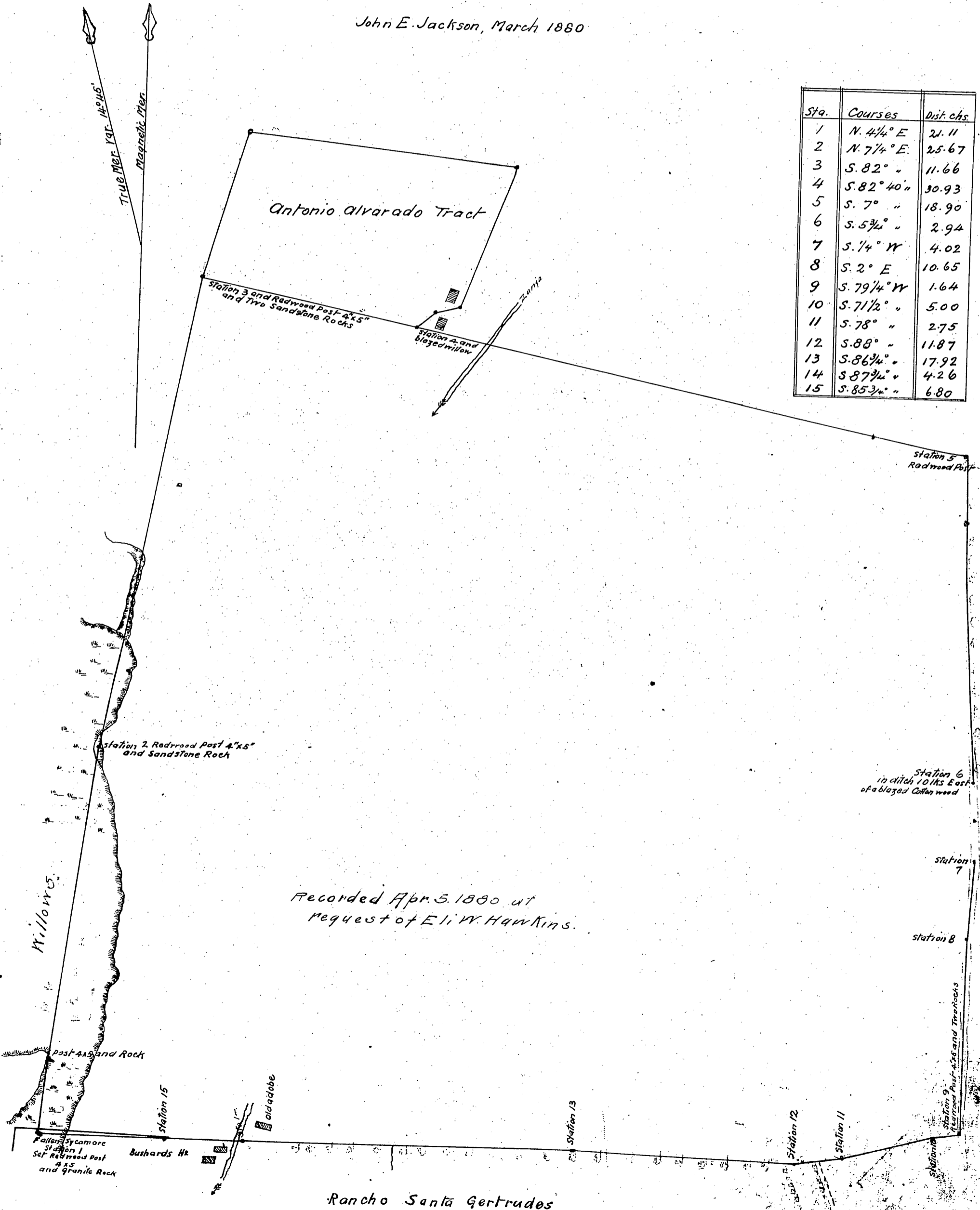
Conveyed to Eli W. Hawkins by Juaguana Moreno and Trinidad

Moreno, April 1st 1879; and recorded in Book 67 of Deeds page 395.

Courses are magnetic - scale 5chs. to one inch.

John E. Jackson, March 1880

Sta.	Courses	Dist. chs.
1	N. 4 1/4° E	21.11
2	N. 7 1/4° E	25.67
3	S. 82° "	11.66
4	S. 82° 40" "	30.93
5	S. 7° "	18.90
6	S. 5 3/4° "	2.94
7	S. 1/4° W	4.02
8	S. 2° E	10.65
9	S. 79 1/4° W	1.64
10	S. 71 1/2° "	5.00
11	S. 78° "	2.75
12	S. 88° "	11.87
13	S. 86 3/4° "	17.92
14	S. 87 3/4° "	4.26
15	S. 85 3/4° "	6.80



Recorded Apr. 5. 1880 at request of Eli W. Hawkins.

Rancho Santa Gertrudes

Crowley 1877