

DM. 88-10

124

MAP OF THE  
La Puente Mill Property

OWNED BY

J.H. Temple, Lucy T. de Arnez and Three Minor Heirs.

Surveyed in September 1880

by

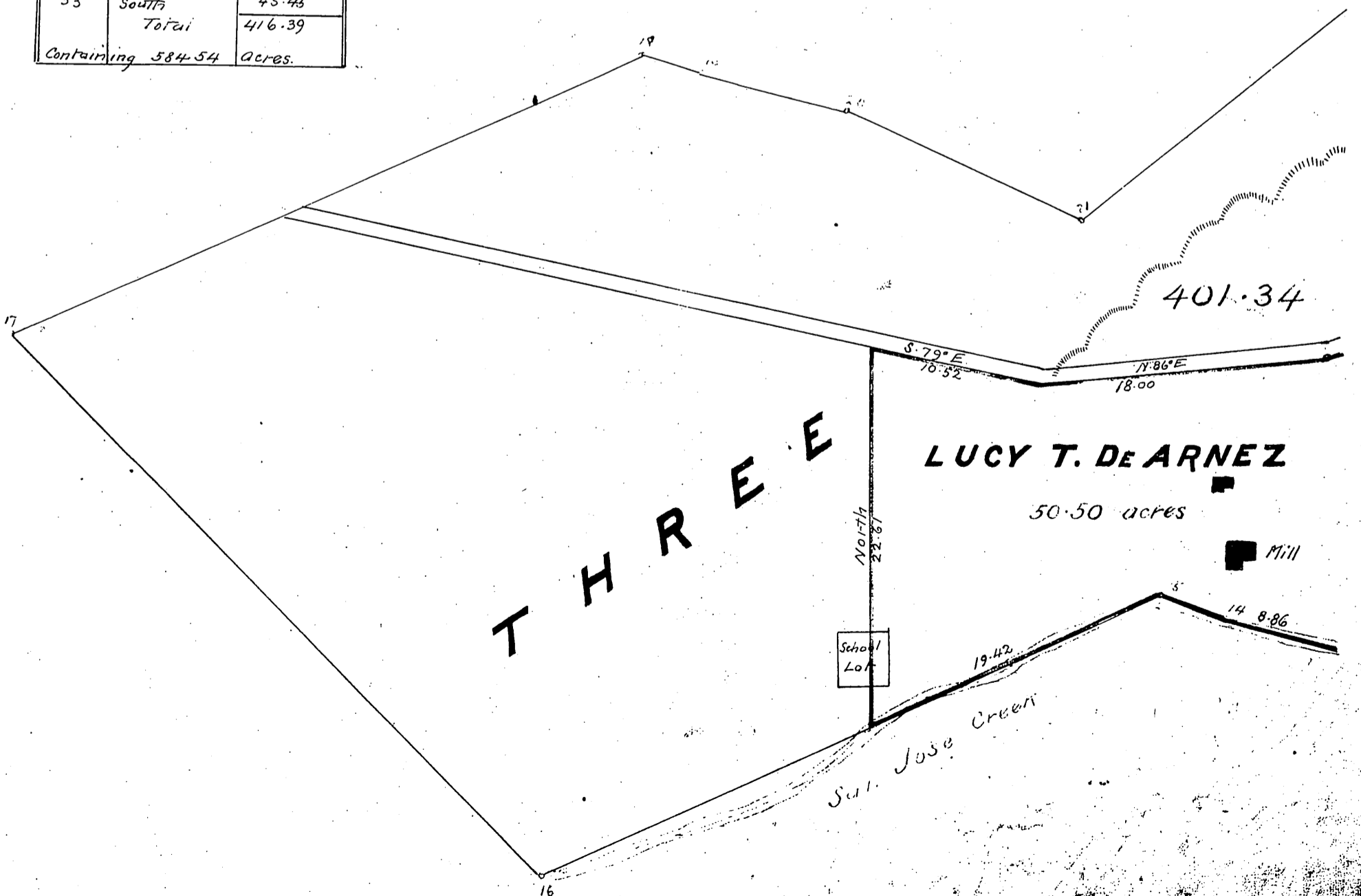
E.T. WRIGHT, CO. SUR.

scale 8 chs. to 1 inch variation 14°50' E.

Station	Course	Distance
1	N. 72 3/4° W	5.07
2	N. 84 3/4° W	5.39
3	S. 79 3/4° W	7.06
4	" 64 3/4° W	5.00
5	" 51 1/4° "	7.00
6	" 64° "	3.45
7	" 81° "	6.00
8	N. 73 3/4° "	2.00
9	" 41 3/4° "	3.00
10	S. 86 1/4° "	4.78
11	S. 53 1/4° "	26.00
12	N. 65 3/4° "	16.00
13	" 77° "	9.15
14	" 74° "	3.90
15	S. 66 3/4° "	41.55
16	N. 45° "	45.45
17	" 66 3/4° E	41.55
18	" 74° "	3.90
19	" 77° "	9.15
20	" 65 3/4° "	16.00
21	N. 53 1/4° "	26.00
22	" 86 1/4° "	4.78
23	S. 41 3/4° "	3.00
24	" 73 3/4° "	2.00
25	N. 81° "	6.00
26	" 64° "	3.45
27	" 51 1/4° "	7.00
28	" 64 3/4° "	5.00
29	" 79 3/4° "	7.06
30	S. 84 3/4° "	5.39
31	" 72 3/4° "	5.07
32	N. 67 1/2° "	34.79
33	South	45.45
Total		416.39

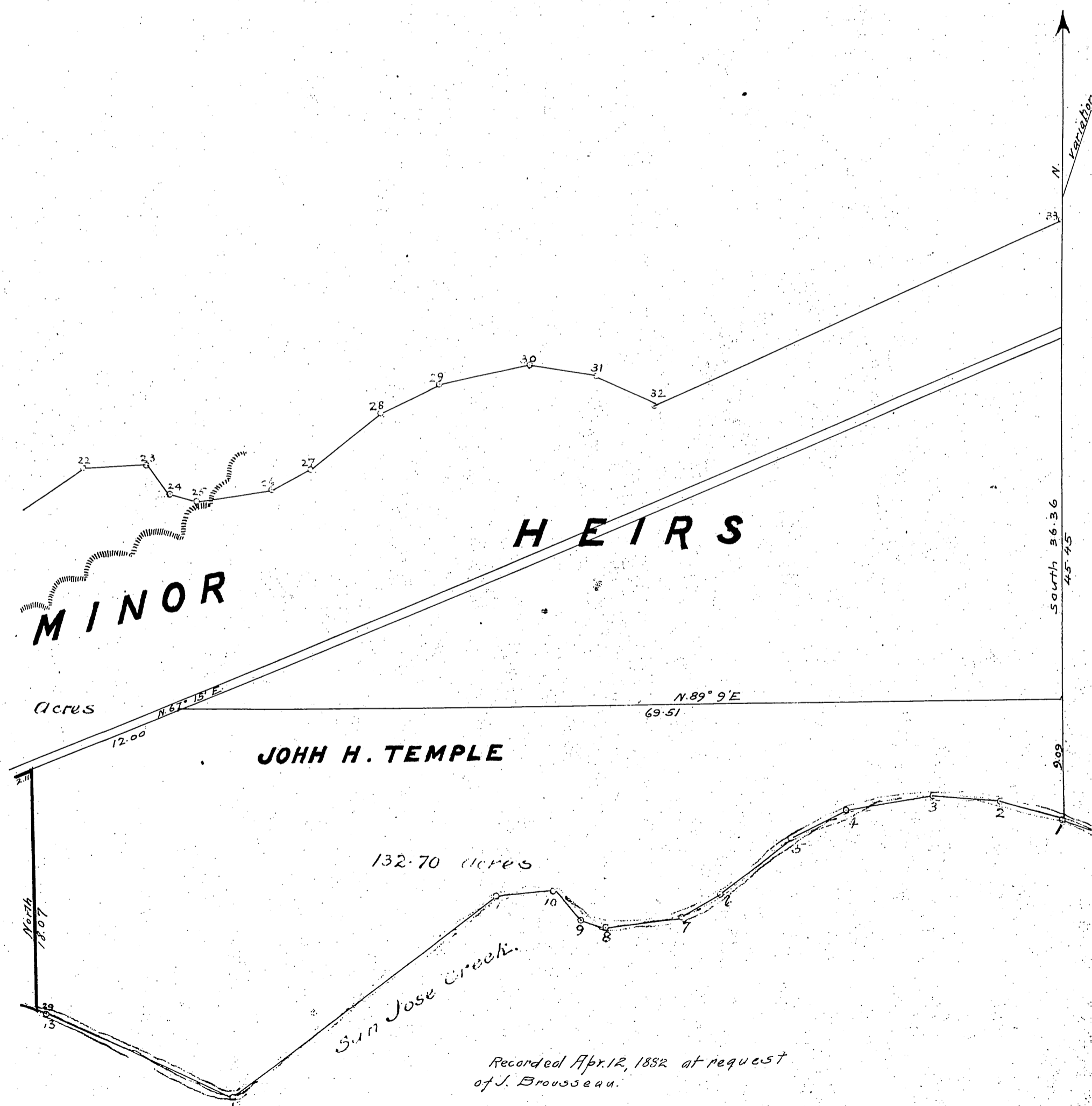
Containing 584.54 acres.

For Transmission Line Easements, see C.F. 1997 & 1999  
" Waste Water Disposal Line see C.S.B. 1543-3



DM 88-11

125



Campbell P. 7