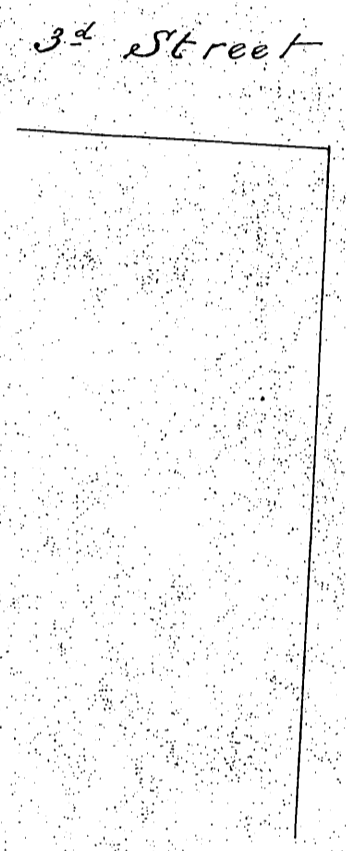
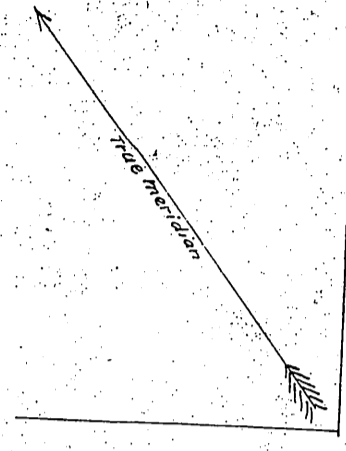


DM 100-201

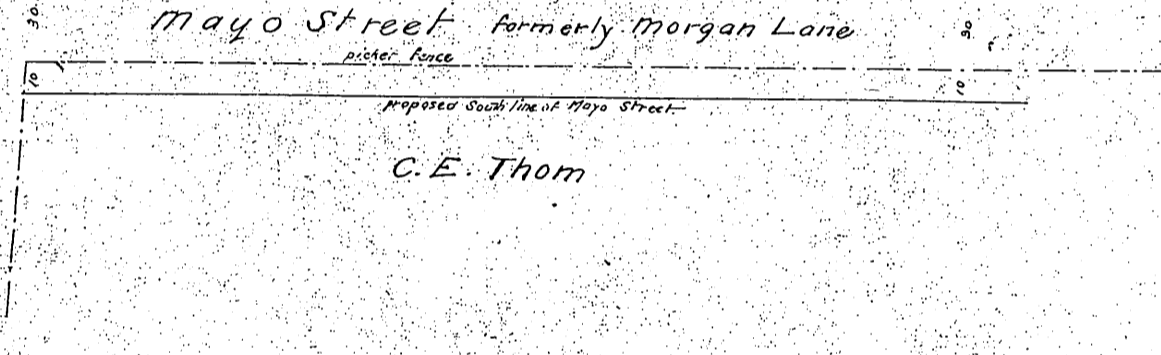
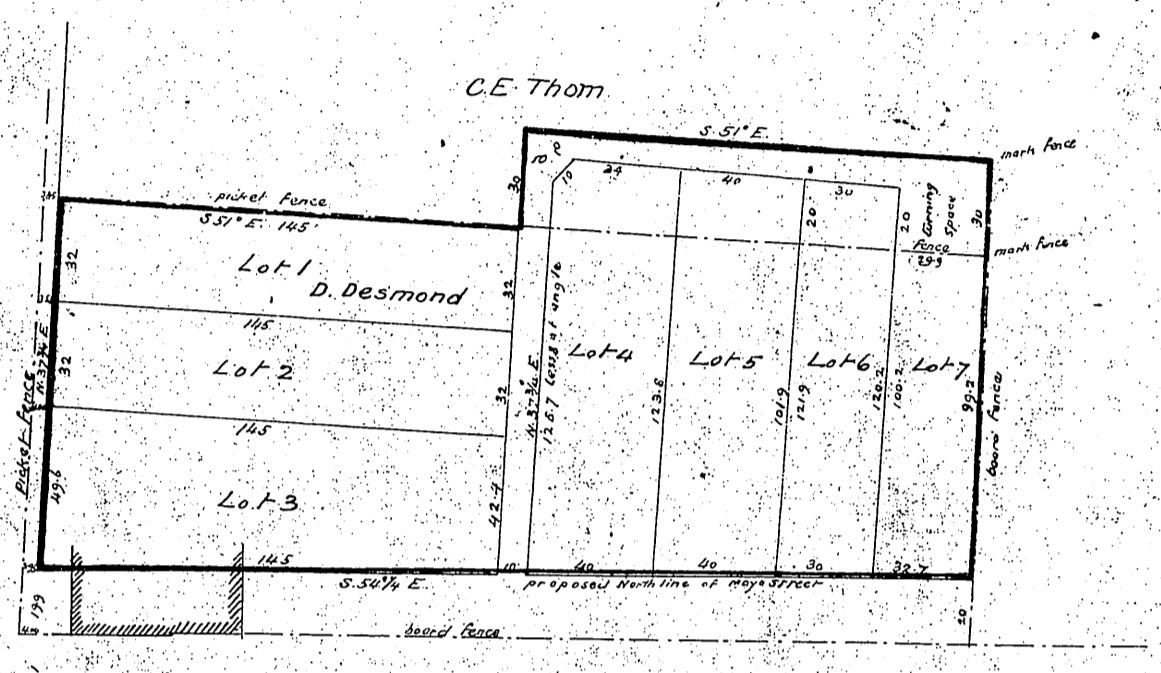
129

Mayo Tract

in Los Angeles City Cal
Surveyed at request of M.L. Wicks Esq.
February 28-1883 by Hansen & Solano
True courses Var. 14° 50' E. scale 30 ft. per inch.



Street



Recorded March 7th 1883, at 3^o P.M.
at request of M.L. Wicks

scale reduced to 60 ft per inch.

Widening Third St. - C.F. 1345.

C. E. Thom
1883