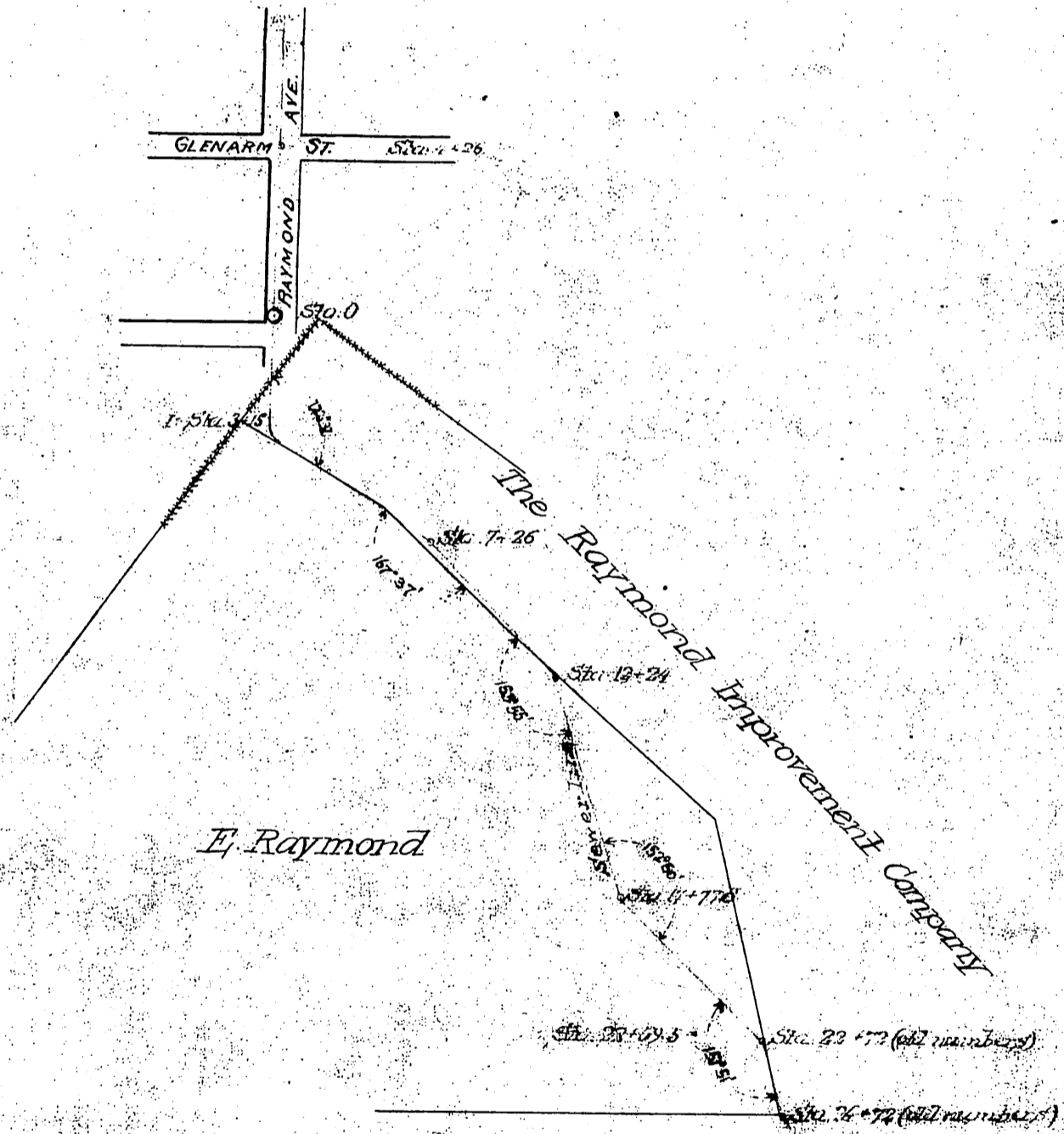


Recorded Dec. 19th 1887, at 2⁴⁵ P.M.

at request of Grantee (City of Pasadena)



MAP
 showing
Main Sewer Line of Pasadena
 as located on lands owned by **Erasmus Raymond**
 Dec. 1887
 Scale 1" = 400' *Chas. Mayer Engr.*

Copy 1/19/87