

DM 702-126

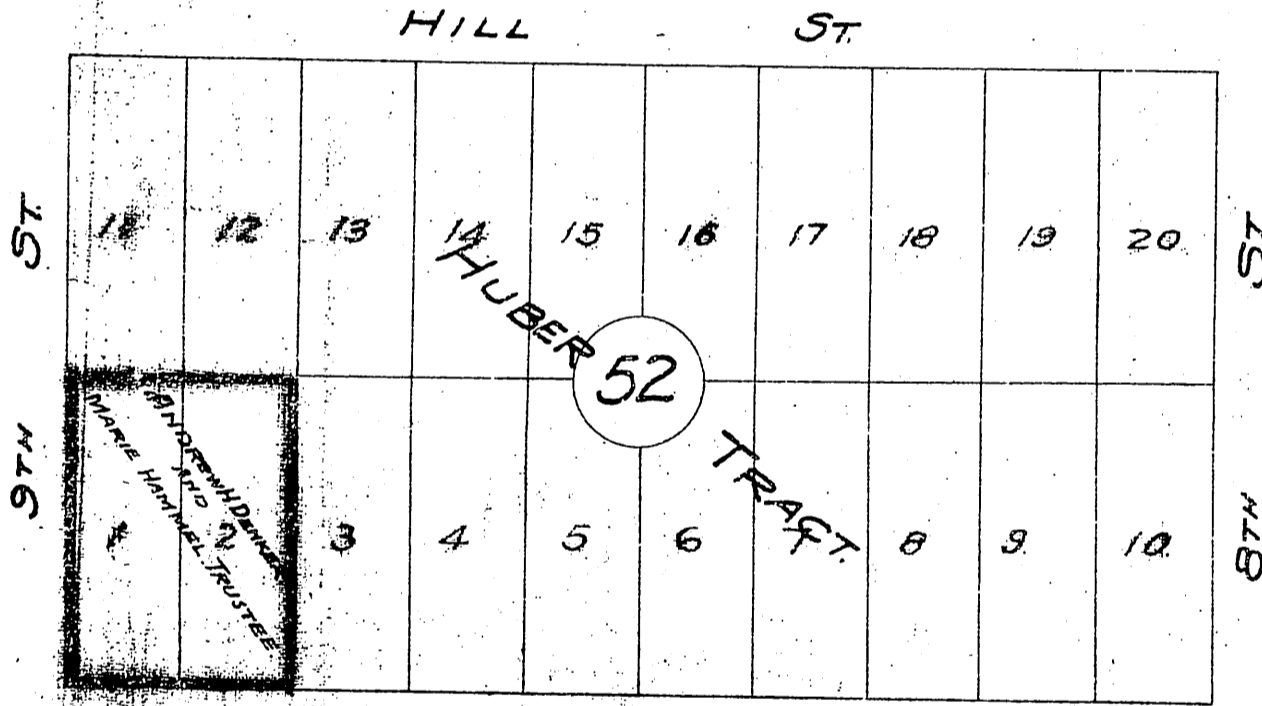
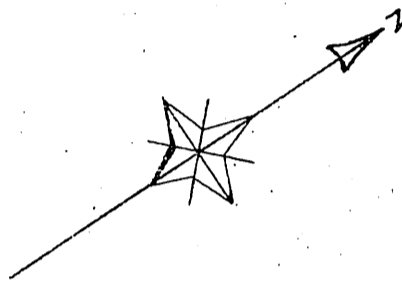
3

126.

I. W. HELLMAN
vs.
ANDREW H. DENKER ETAL.
REFEREE'S MAP IN PARTITION.
TRACT No. 1.
AWARDED TO
ANDREW H. DENKER AND
MARIE HAMMEL, TRUSTEE.

SCALE: 100 FT. TO 1 INCH.

LOCATED BY
E. T. WRIGHT
FEB. 1891.



BROADWAY.

(CASE NO. 14482.)