

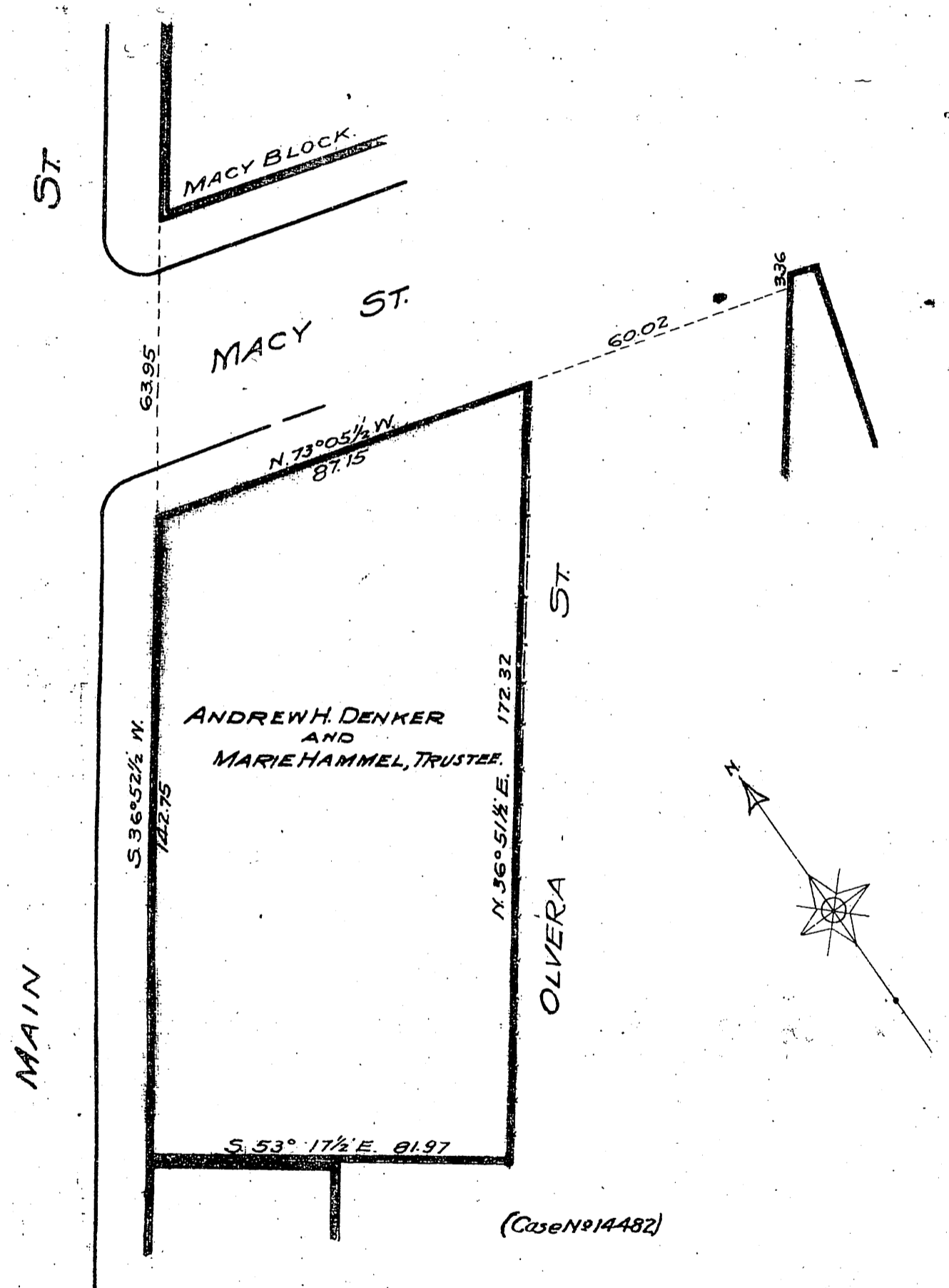
4

I. W. HELLMAN  
VS  
ANDREW H. DENKER, ETAL.  
REFEREE'S MAP IN PARTITION.

TRACT N<sup>o</sup>2.  
AWARDED TO  
ANDREW H. DENKER AND  
MARIE HAMMEL, TRUSTEE,

LOCATED BY  
E. T. WRIGHT.  
FEB. 1891

SCALE: 30 FT. TO 1 INCH.



(Case N<sup>o</sup> 14482)