

From "A" to "B", a strip of land 66 ft. wide
deeded to City of South Pasadena, by Daggett,
Porter and Green.

Land owned
by
C. D. Daggett.

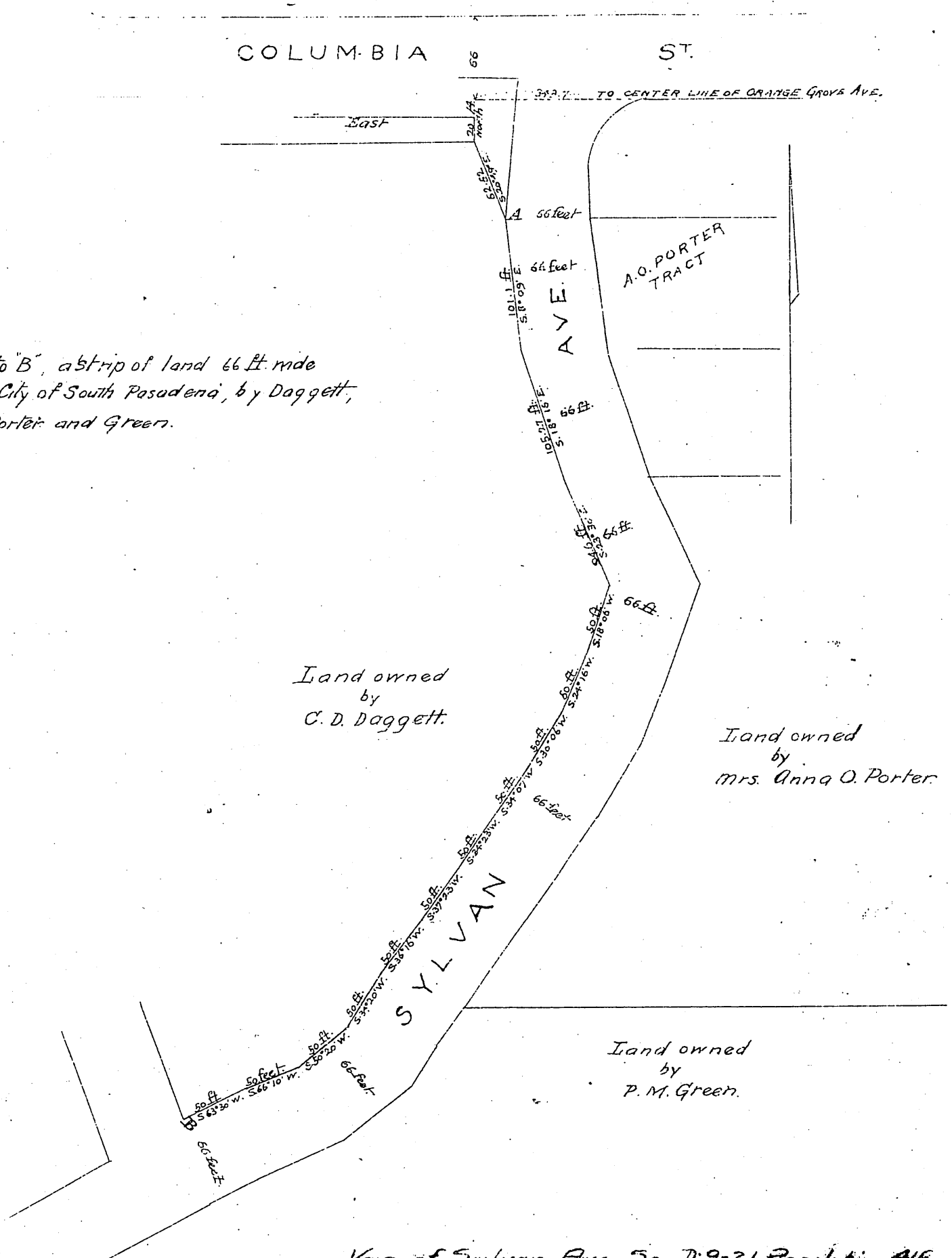
Land owned
by
Mrs. Anna O. Porter.

Land owned
by
P. M. Green.

Vac of Sylvan Ave. See D:9-21 Resolution 416

Recorded April 28th 1891, at 12¹³ P.M.

at request of City of South Pasadena.



Copy
1891