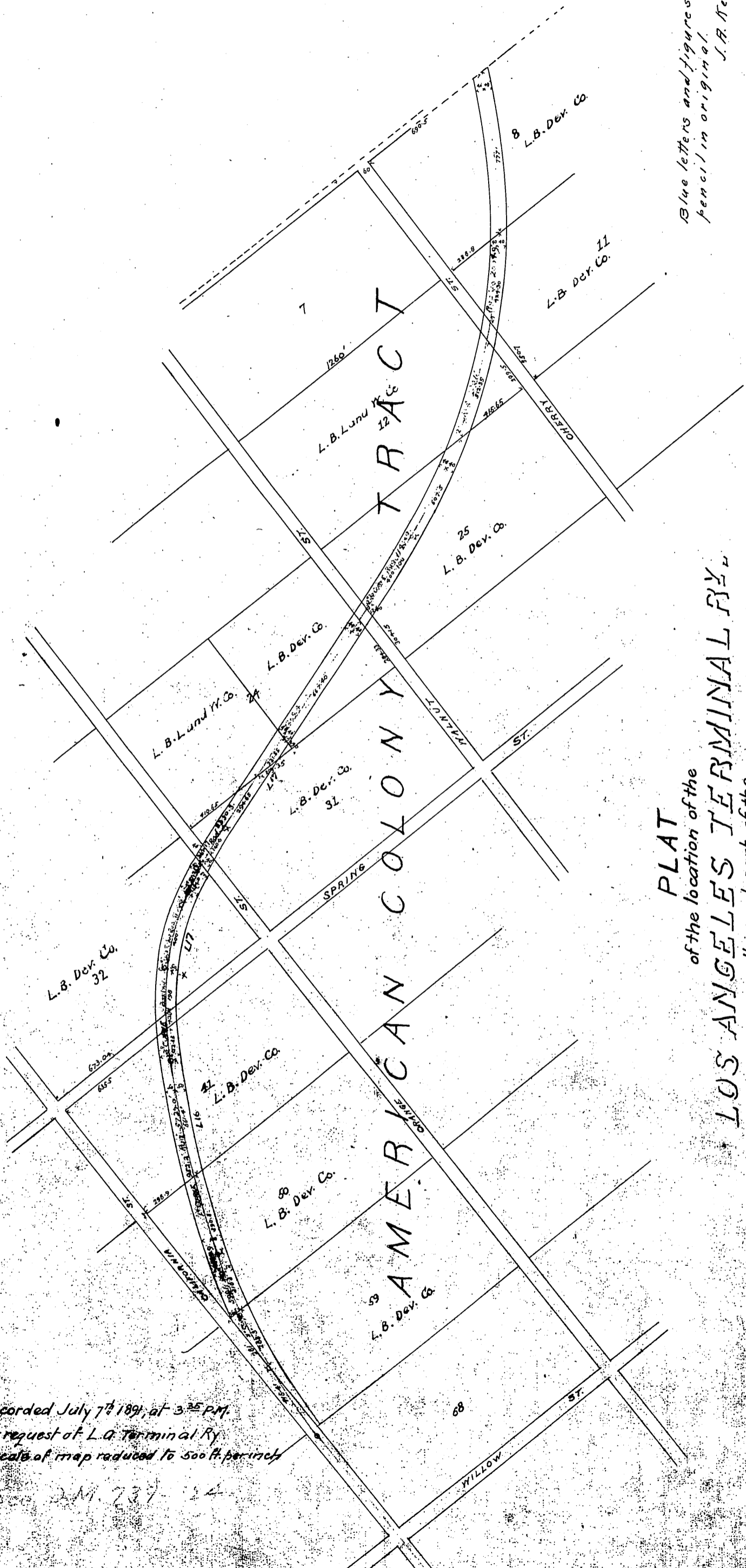


Blue letters and figures are in pencil in original. J.A. Kelly, Co. Rec.



PLAT
of the location of the
LOS ANGELES TERMINAL RY.
through part of the
AMERICAN COLONY TRACT
SCALE 200' = 1"

Recorded July 7th 1891, at 3:25 PM.
at request of L.A. Terminal Ry.
scale of map reduced to 500 ft. per inch

DM 719-313