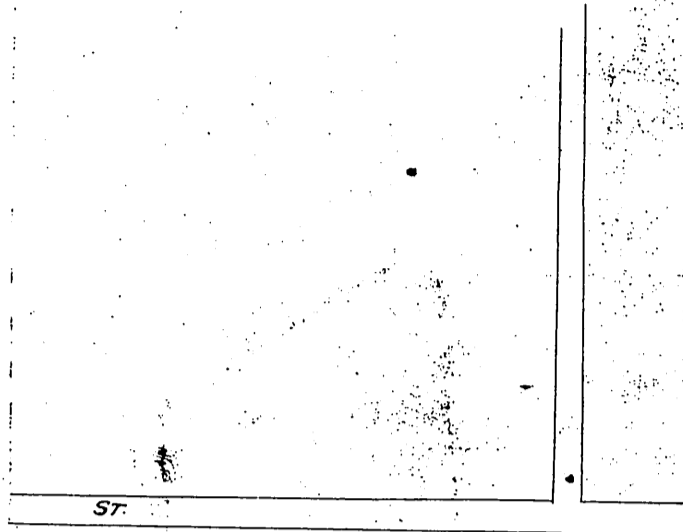


DM 724-267

26

20

Sec. 1



T. 2. S. R. 11. W.

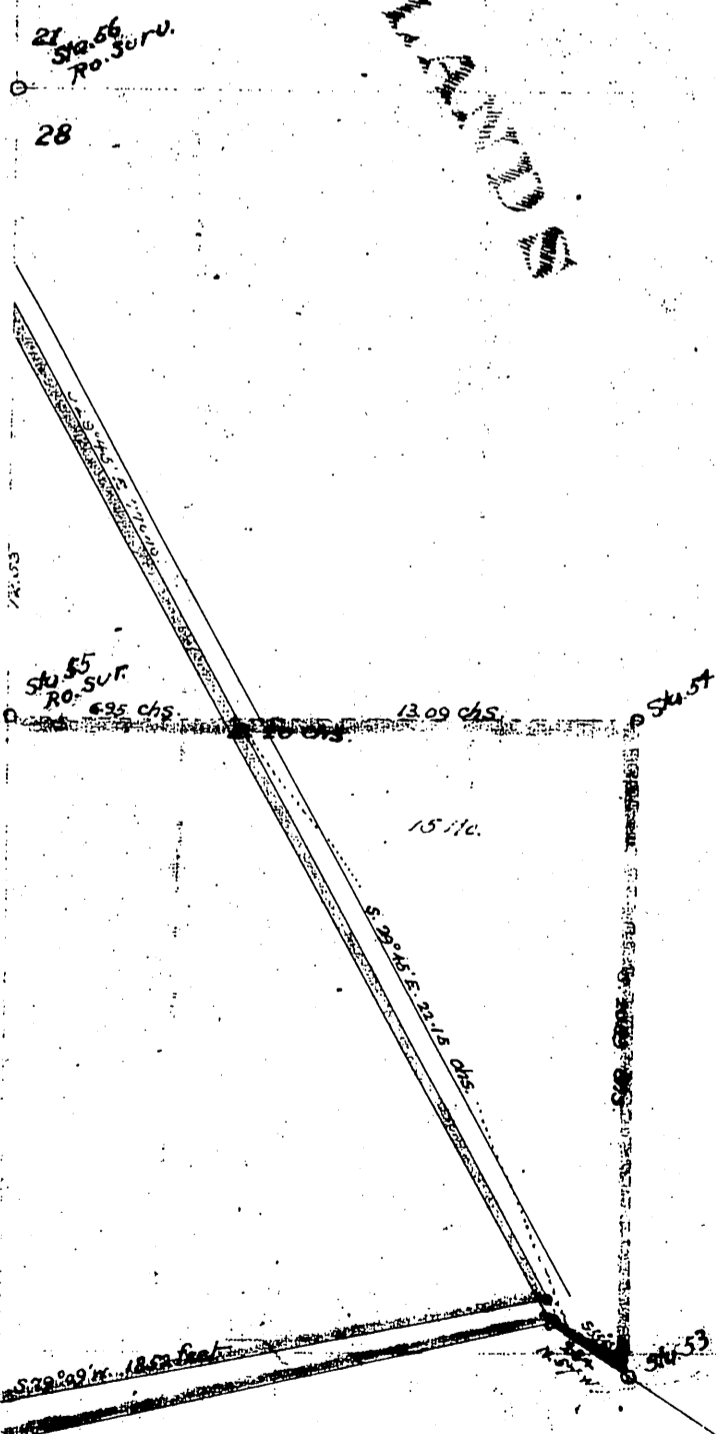
PUBLIC

Compiled by the Abstract
and Title Insurance Co. of
Los Angeles, Cal., from Deeds
and Maps of record in said
Co. April 25th 1891.

Scale 400 ft. to 1 inch

LAND

Violet words and figures and lines are in pencil in original



For Center St. see D: 64-34, OR. 7736-299
Center St. changed to Washington Blvd. ~ E: 49-12, Min. Bk. 249-365

Sec. 28

Santa Gertrudes

Recorded July 22nd 1891, at 4:22 PM
at request of Dr. Walter Lindley

DEEDS-724