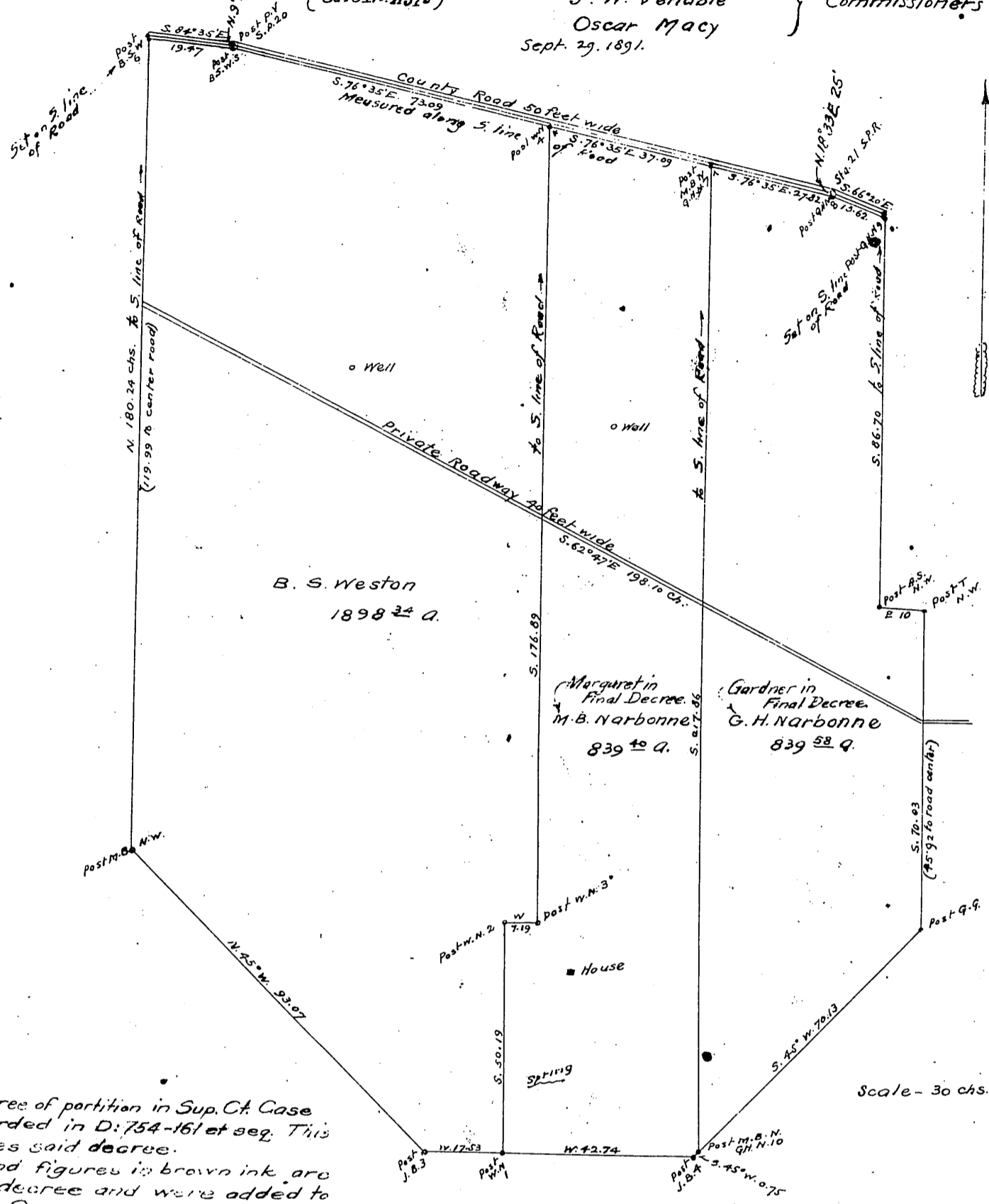


Partition Map
of that part of the Rancho Palos Verdes, known
as the Narbonne and Weston Tract,
By order of the Superior Court of Los Angeles County.

(Case No. 11575)

Charles J. Healey }
J. W. Venable } Commissioners
Oscar Macy }
Sept. 29, 1891.



NOTE -
The final decree of partition in Sup. Ct. Case No. 11575 is recorded in D: 754-161 et seq. This map accompanies said decree.
The notes and figures in brown ink are from the final decree and were added to this map by Co. Sur.
The final decree recognizes a County Road 50' wide, 25' on each side of the north line of Ro. Palos Verdes as shown on this map and the several allotments extend only to the south line of said road.
Co. Sur.
June 9, 1921.

Scale - 30 chs. to 1 in

Deed for Newton St D:10-166 D:3464-290
Wilmington & Salt Works Road D:2-189 D:1135-101