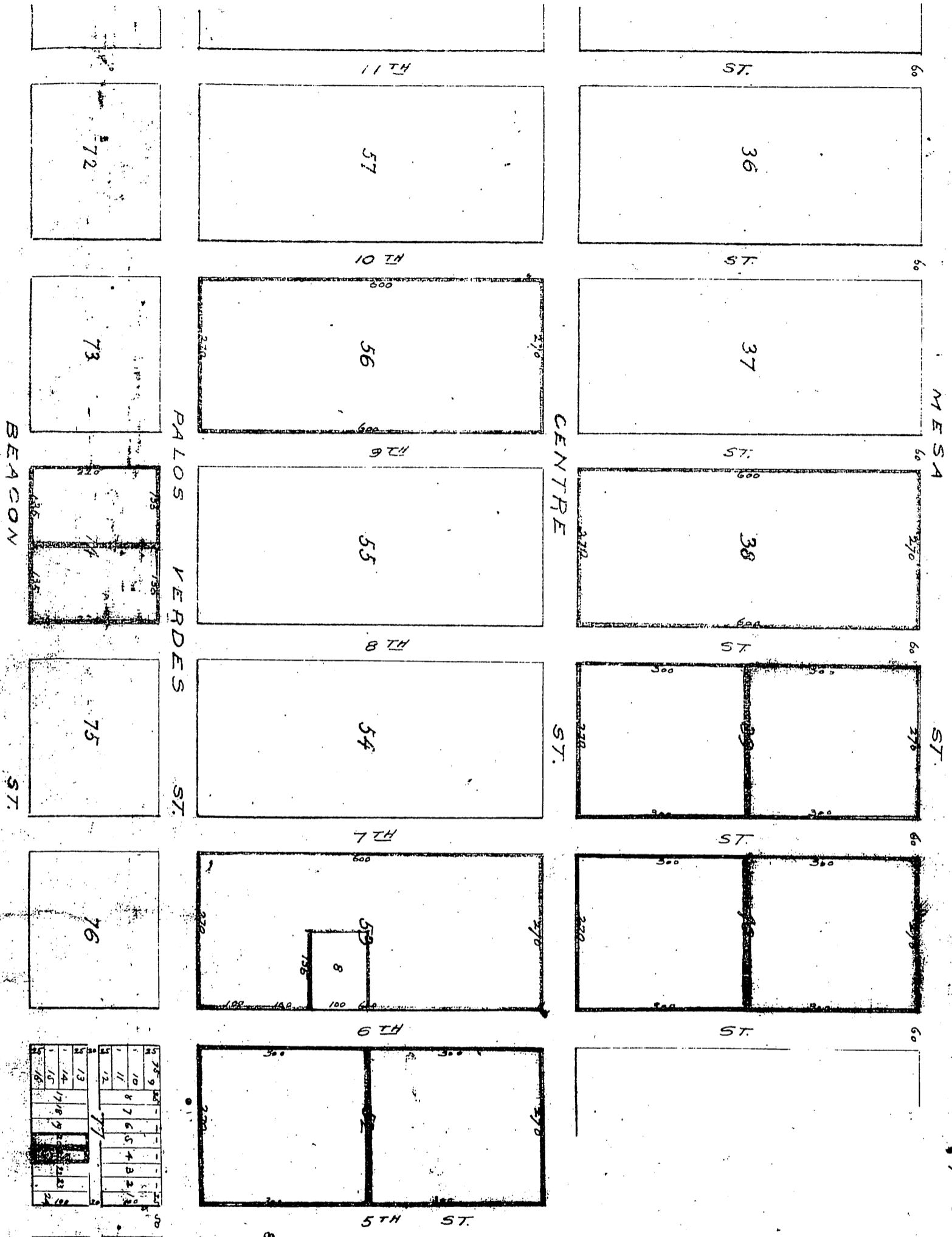


Plat showing the property in the Town of San Pedro, owned by B.S. Weston, Mrs. Margaret B. Narbonne, and Gardner H. Wilborne, as allotted to them under decree of the Superior Court in and for the County of Los Angeles by the Commissioners appointed by said decree.

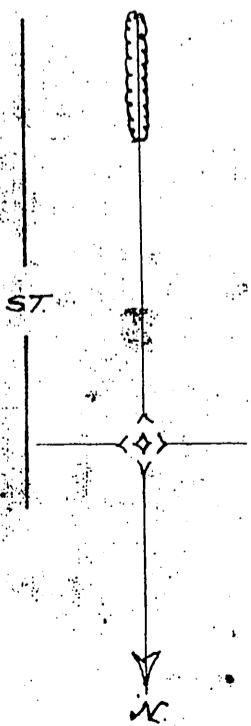
Charles T. Healey  
J. W. Venable  
Oscar May  
Commissioners  
Sept. 25, 1891



1	2	3	4	5	6	7	8	9	10	11	12	13	14	15	16	17	18	19	20
1	2	3	4	5	6	7	8	9	10	11	12	13	14	15	16	17	18	19	20

1	2	3	4	5	6	7	8	9	10	11	12	13	14	15	16	17	18	19	20
1	2	3	4	5	6	7	8	9	10	11	12	13	14	15	16	17	18	19	20

1	2	3	4	5	6	7	8	9	10	11	12	13	14	15	16	17	18	19	20
1	2	3	4	5	6	7	8	9	10	11	12	13	14	15	16	17	18	19	20



NOTE  
Green — B.S. Weston  
Yellow — G.H. Narbonne  
Red — Mrs. M. Narbonne

Scale - 200 Feet to 1 inch

Recorded Oct. 19, 1891, at request of J. A. Grates.

(See Record of Sundays, P. Page 4)