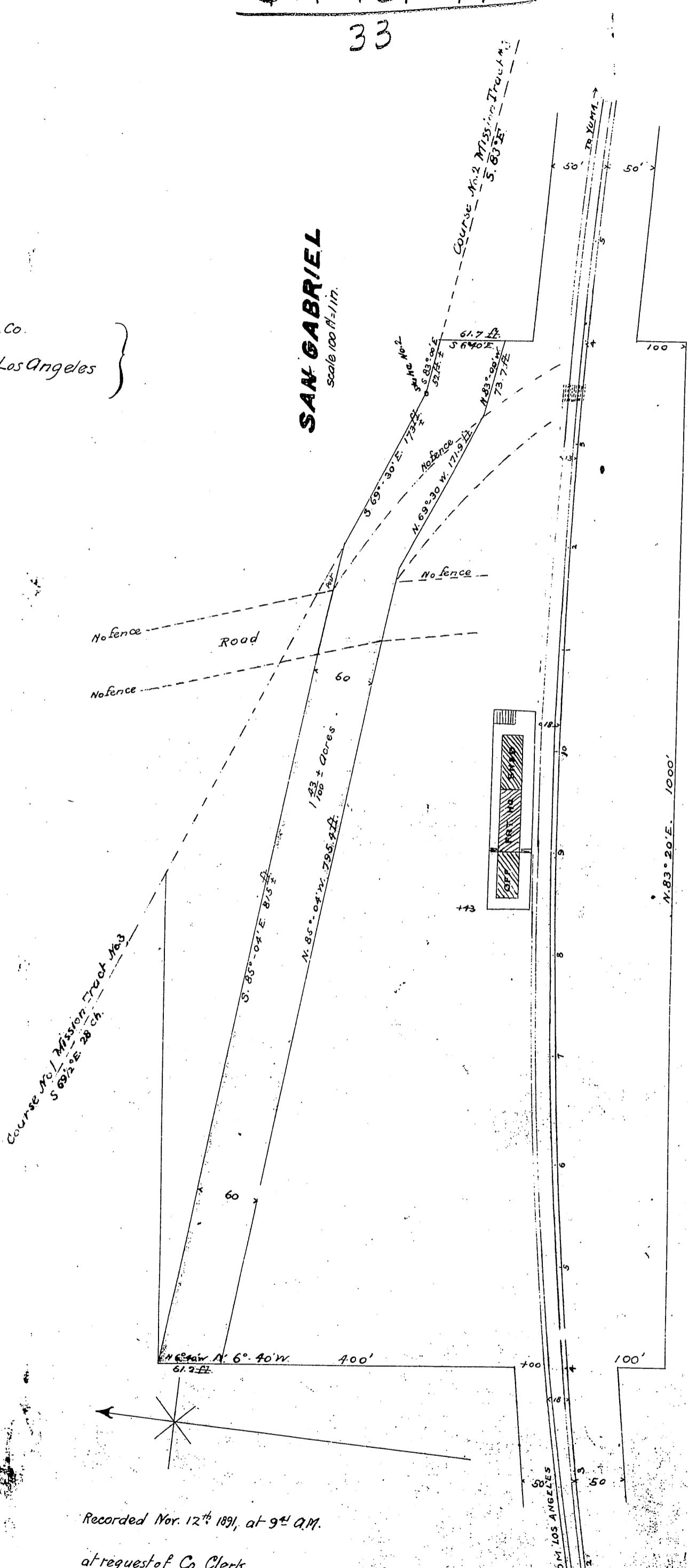


S.P.R.R. Co.  
To  
County of Los Angeles

**SAN GABRIEL**  
Scale 100 ft = 1 in.



Recorded Nov. 12<sup>th</sup> 1891, at 9<sup>th</sup> A.M.

at request of Co. Clerk.

Now Dalton St by Ord 42 See D: 18-250

*Handwritten initials/signature*