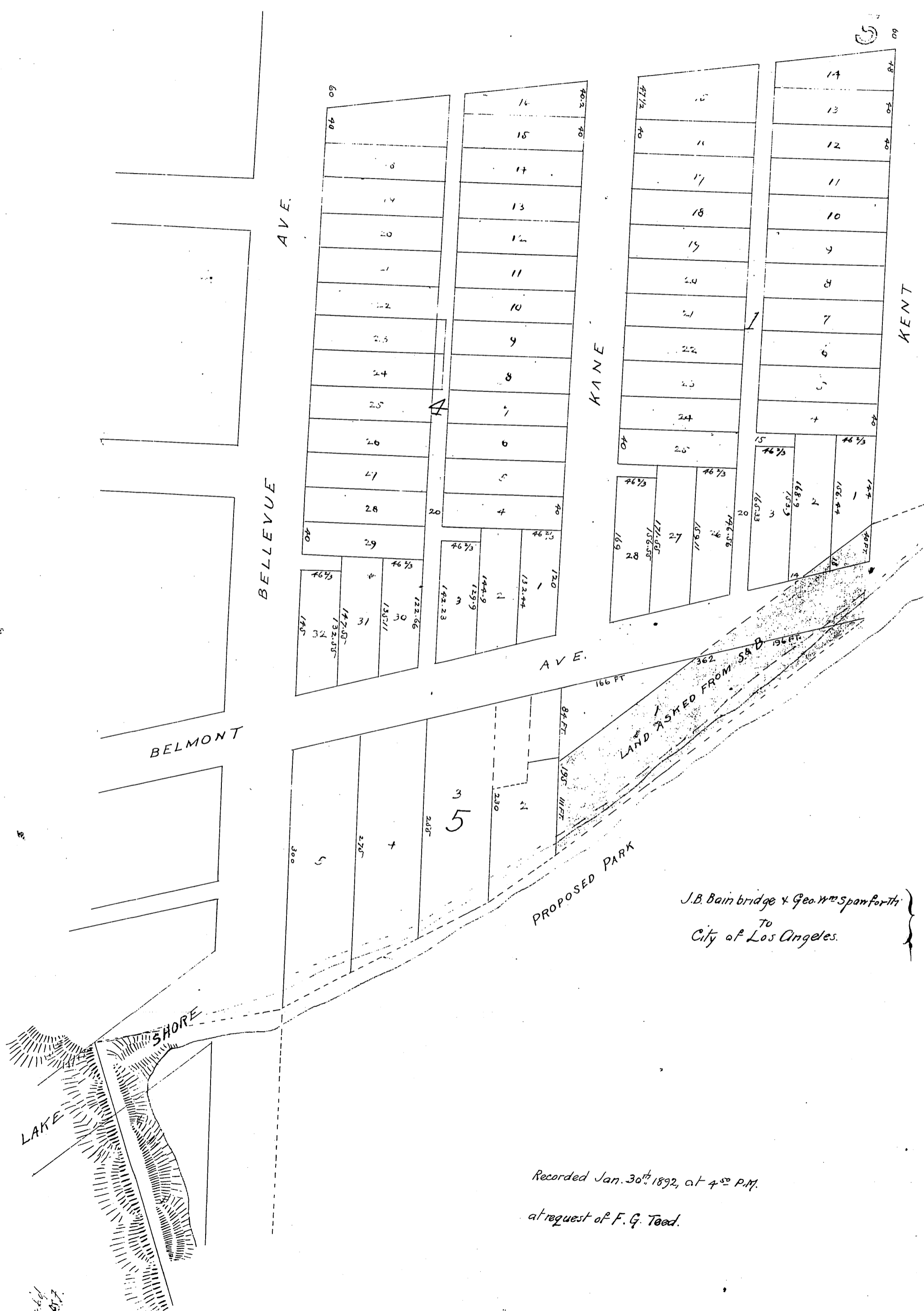


DM-772-97

44

9



LAND TAKEN FROM S & B
 362
 166 FT
 84 FT
 195.11 FT
 196 FT

J.B. Bainbridge & Geo. W. Spanforth
 TO
 City of Los Angeles.

Recorded Jan. 30th 1892, at 4⁵⁰ P.M.
 at request of F. G. Teed.

Conrad
 1897