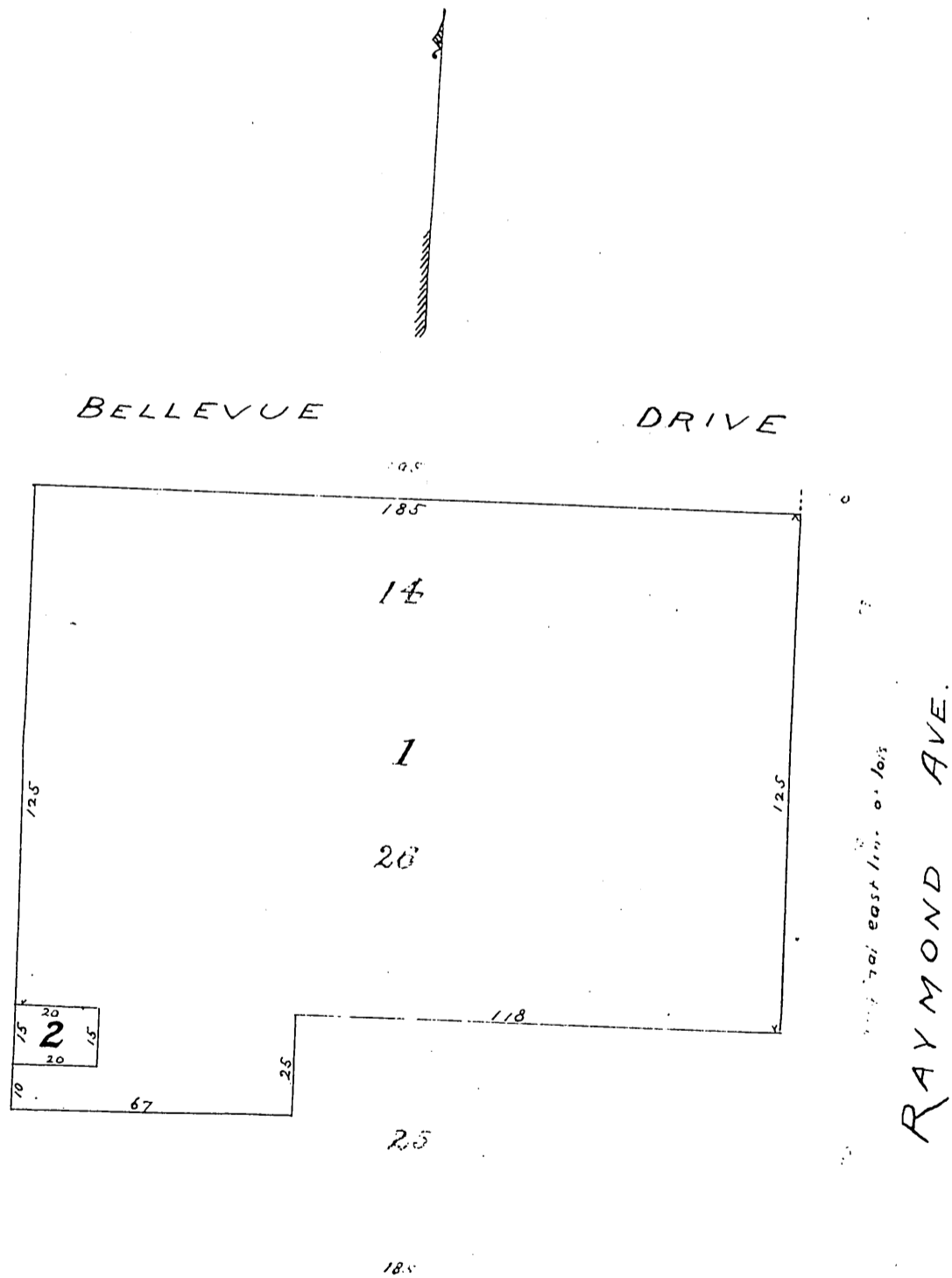


DM 795-278

278

52

Showing a portion of Banbury's Subdn,
at misc 10-31, and a portion of the Julia E. Ward
Homestead Tract, at misc 7-54, Pasadena, Cal.



Recorded Jun. 29th 1892, at 3⁰⁰ P.M.

at request of A.W. Roche

Comp'd
5/27