

MAP  
OF THE  
**ESTELLA TRACT**  
LOS ANGELES CITY  
CAL.

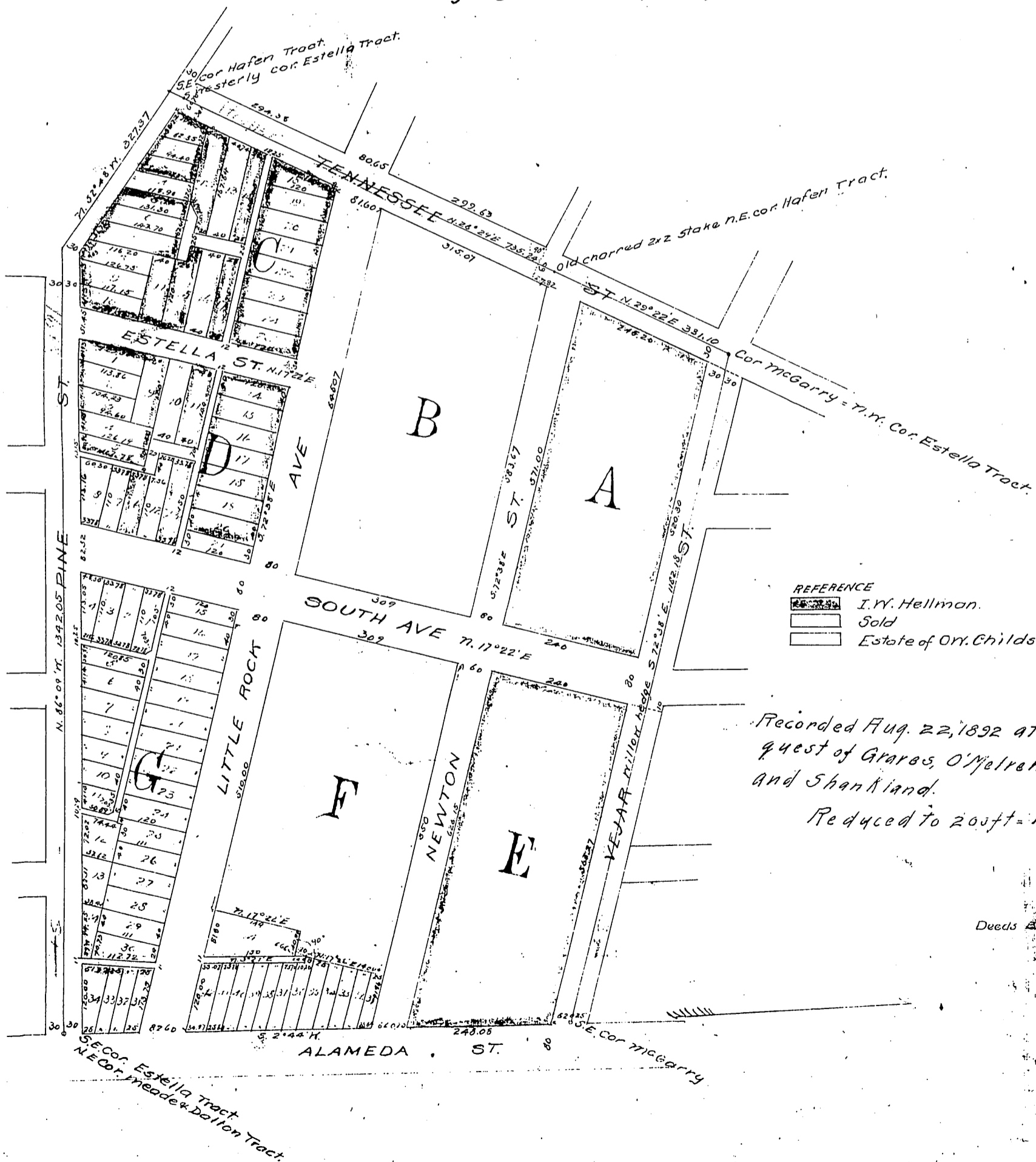
Surveyed in December 1887 by J. H. Dockweiler

{SCALE 100 FEET  
TO ONE INCH.}

Amended by John F. Jackson  
June 1892

For Tennessee St Sec D: 5244-129 + D: 5245-115 D: 16-21,  
Felicia St changed to Compton Ave, Ord. 34646

Alley adj. Lots 31 to 34, Blk. G, vacated - Ord. 76094.



Deeds 811

Copy 1892

SW-3