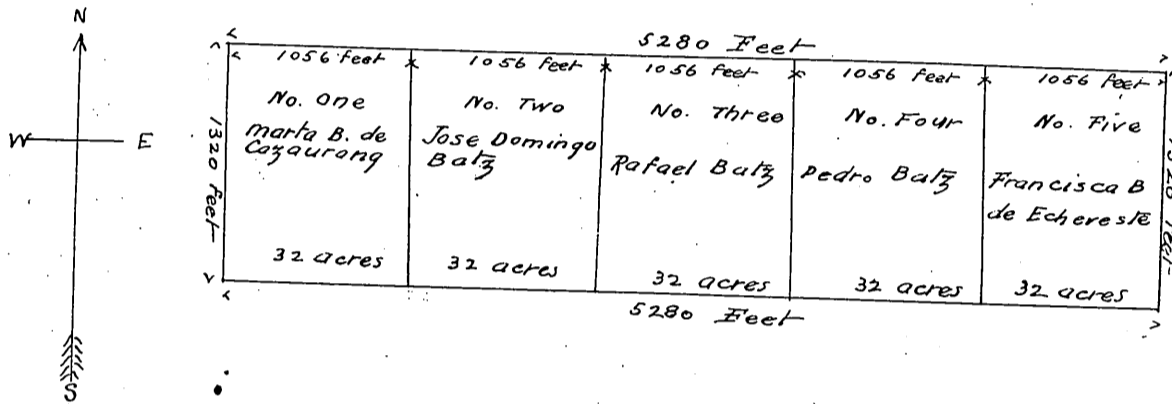


DM 822-120.
58

120

MAP
OF THE
NORTH HALF OF THE SOUTH HALF
OF SEC. 21, T. 15. R. 12W. S.B. 8 & 17.



Recorded Oct. 7th 1892, at 11³⁰ A.M.
at request of Francisco Echereste.

For State Hwy (Ramona Blvd.) see C.S.B-441-2

Copy 1/2/92

SHT. 8

DEEDS 822