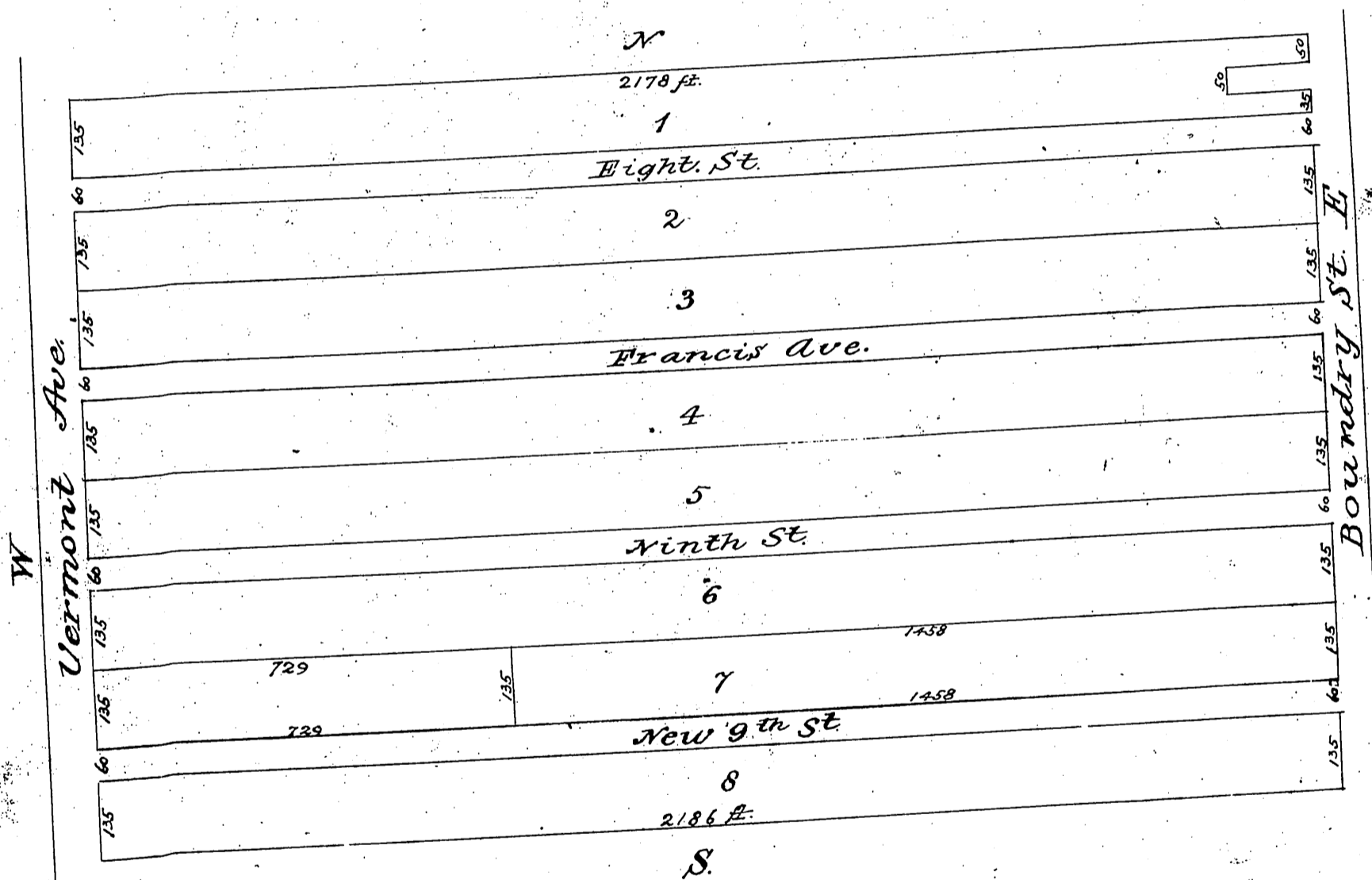


DM 827-278

69

278

In the matter of the Estate of Francis M. Holst, Deceased. } Partition of Real Estate. S.W. 1/4 of the N.W. 1/4 + Lot 2 of Sec. 30, T. 13. R. 13 W. S.B.M. } Scale 132 ft = 1 in. H.Y. Harding, Surv.



Scale reduced one half.

Opening of 60' St in Lot 8 II 2563-45 - II 7-222  
" " " " " " II 2144-56 - II 7-255  
Virginia, Stever St D 11-188 D 3036-20

Recorded Dec. 6<sup>th</sup> 1892, at 4<sup>30</sup> P.M.

at request of Chapman & Hendricks.

Comp'd  
1892