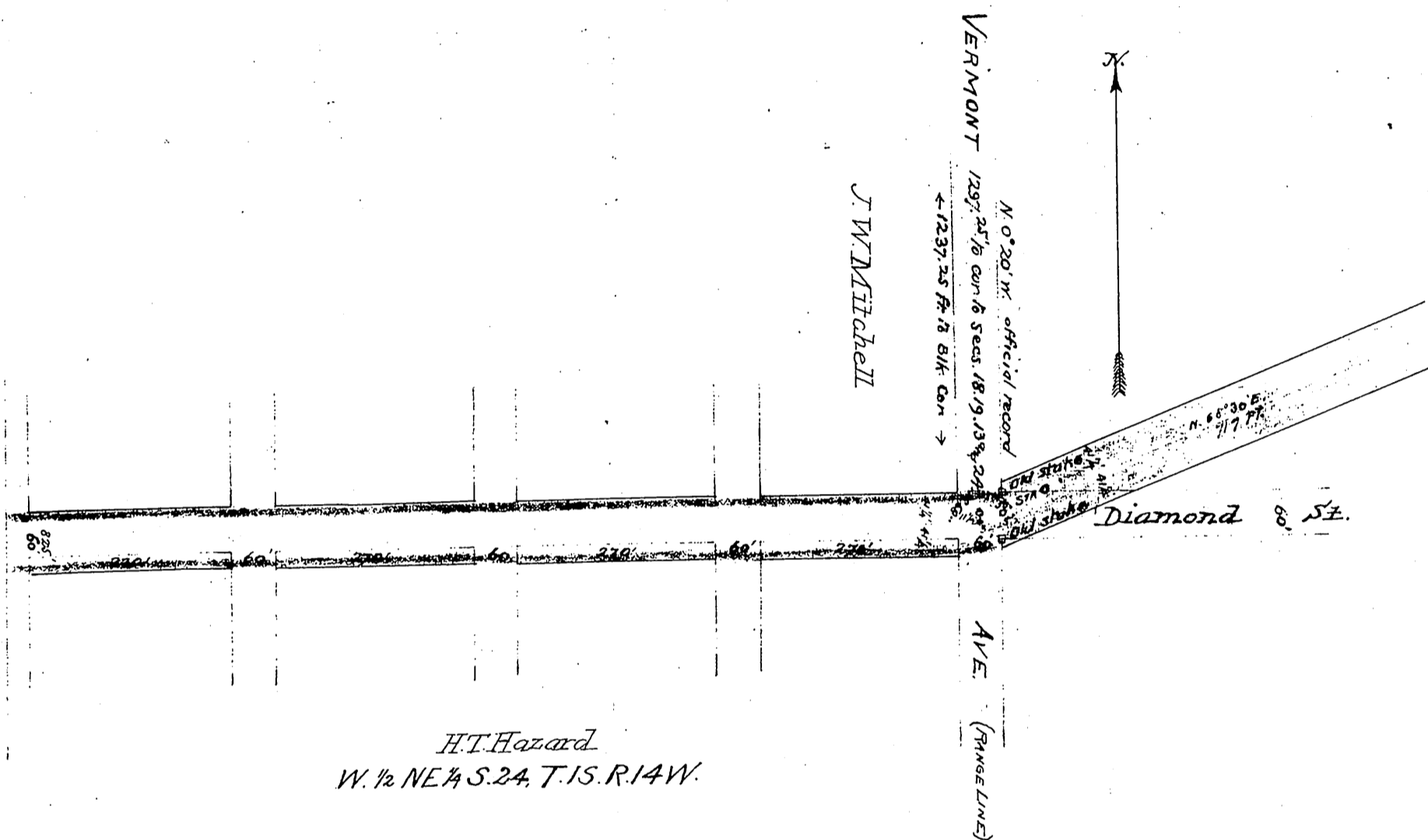


# PROPOSED EXTENSION



VERMONT 1297 25 1/2 COR. 6 SEAS. 18, 19, 13 1/2, 22 1/2

N 0° 20' 11" OFFICIAL RECORD  
← 1237.25 FT. 18 8/16 COR. →

J.W. Mitchell



N 68° 30' E  
117 FT.

Diamond St.

AVE. (RANGE LINE)

H.T. Hazard  
W. 1/2 NE 1/4 S. 24, T. 15, R. 14 W.