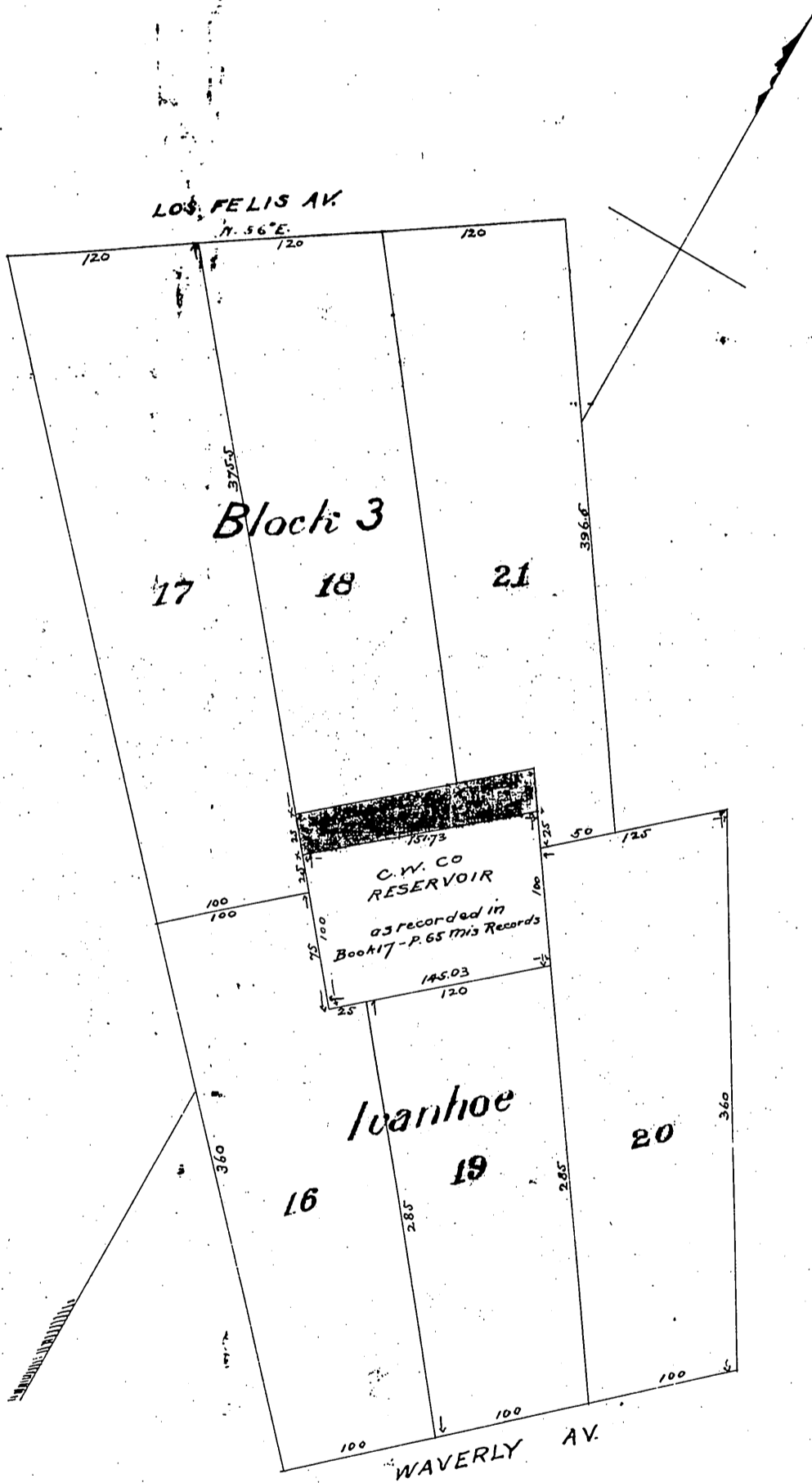


Plat of a part of Block 3 Ivanhoe

as recorded in Book 17 pages 65-66-67 and 68 Miscellaneous Records of Los Angeles County Cal. showing that piece of land deeded by R.D. List-trustee to the Los Angeles City Water Co a corporation.

SCALE 100 FT. TO 1 INCH



Recorded July 25<sup>th</sup> 1894, at 3<sup>55</sup> P.M.

at request of S.H. Mott.

*Copy of Plat*