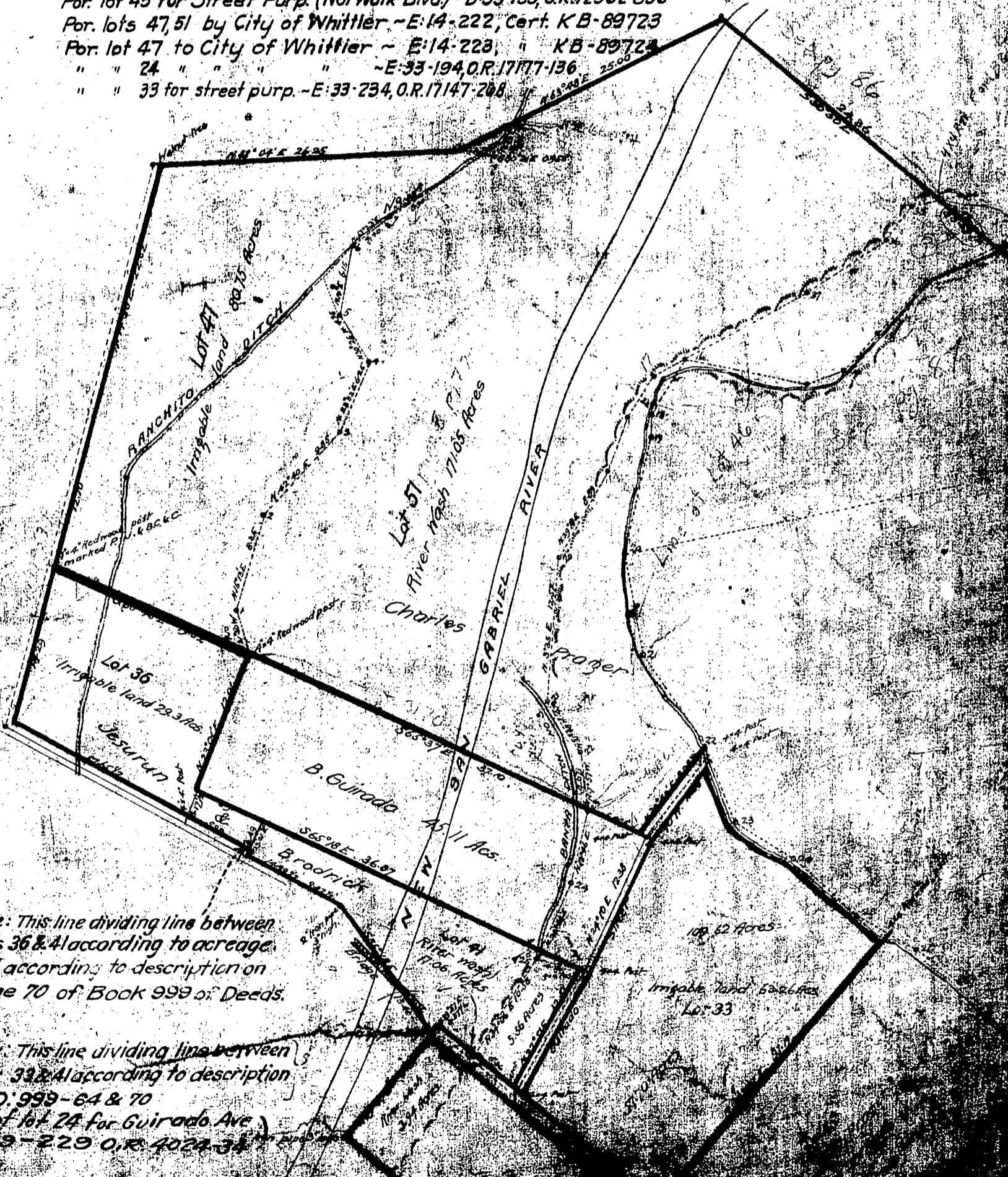


For State Hwy (Whittier Blvd) see C.S.B-272
 For Beverly Blvd. see H:46-1-2-3
 For lot 24 for San Gabriel River - D:74-52 O.R. 9687-186
 For Lot 24 to L.A. Co. Flood Control Dist. D:29-262 O.R. 3061-74
 For " 47 for Stephens St. D:48-42 O.R. 4452-386
 For lot 41 for San Gabriel River D:50-117 O.R. 5697-223
 For lot 41 " " " " D:50-118 O.R. 6158-175
 For lot 41 & B. Guirado 45.11 Ac. Allot. for San Gabriel River 50-122 O.R. 4755-110 and D:50-122
 For lots 47, 51 to City of Whittier - D:72-192, Cert. FU56505
 For lot 45 for Street Purp. (Norwalk Blvd) - D:99-153 O.R. 12962-396
 For lots 47, 51 by City of Whittier - E:14-222, Cert. KB-89723
 For lot 47 to City of Whittier - E:14-223, " KB-89723
 " " 24 " " " " - E:33-194 O.R. 17177-136
 " " 33 for street purp. - E:33-234 O.R. 17147-208



Note: This line dividing line between Lots 36 & 41 according to acreage and according to description on page 70 of Book 999 of Deeds.

Note: This line dividing line between Lots 33 & 41 according to description in D: 999-64 & 70
 For lot 24 for Guirado Ave D: 39-229 O.R. 4024-34

Map A