

25

Lemon Road Extension  
 Surveyed Dec. 6, 1895  
 by E. T. Wright, County Surveyor  
 W. B. Nicholson, Deputy  
 Scale 1 in = 200 ft. Note Book 5, Page 40

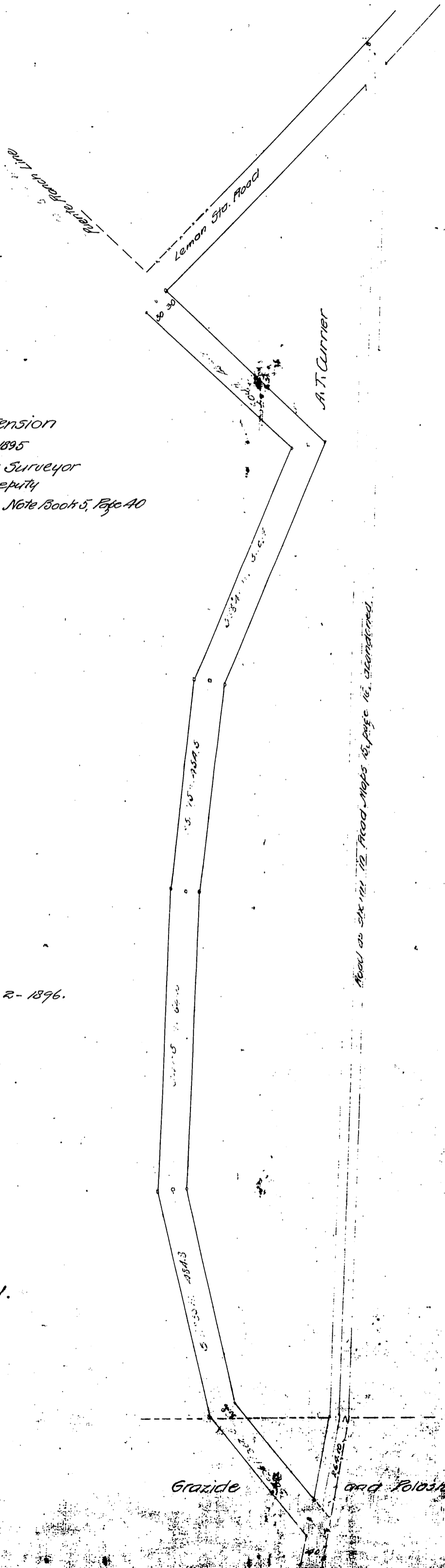
Recorded at request of L.A. County Apr. 2 - 1896.

A.T. Currier  
 H.J. Fugua  
 H.O. McClintock  
 F. Graziade  
 Sam Polaske  
 Isador "

To  
 L.A. Co.

See D. 2-131.  
 " C.S. 8203

Por. of Road Deeded by County D:78-127, O.R. 9679-186



Road as shown in 12. Road Maps 15, page 16, abandoned.