

# MAP of the San Fernando and Tunnel Road

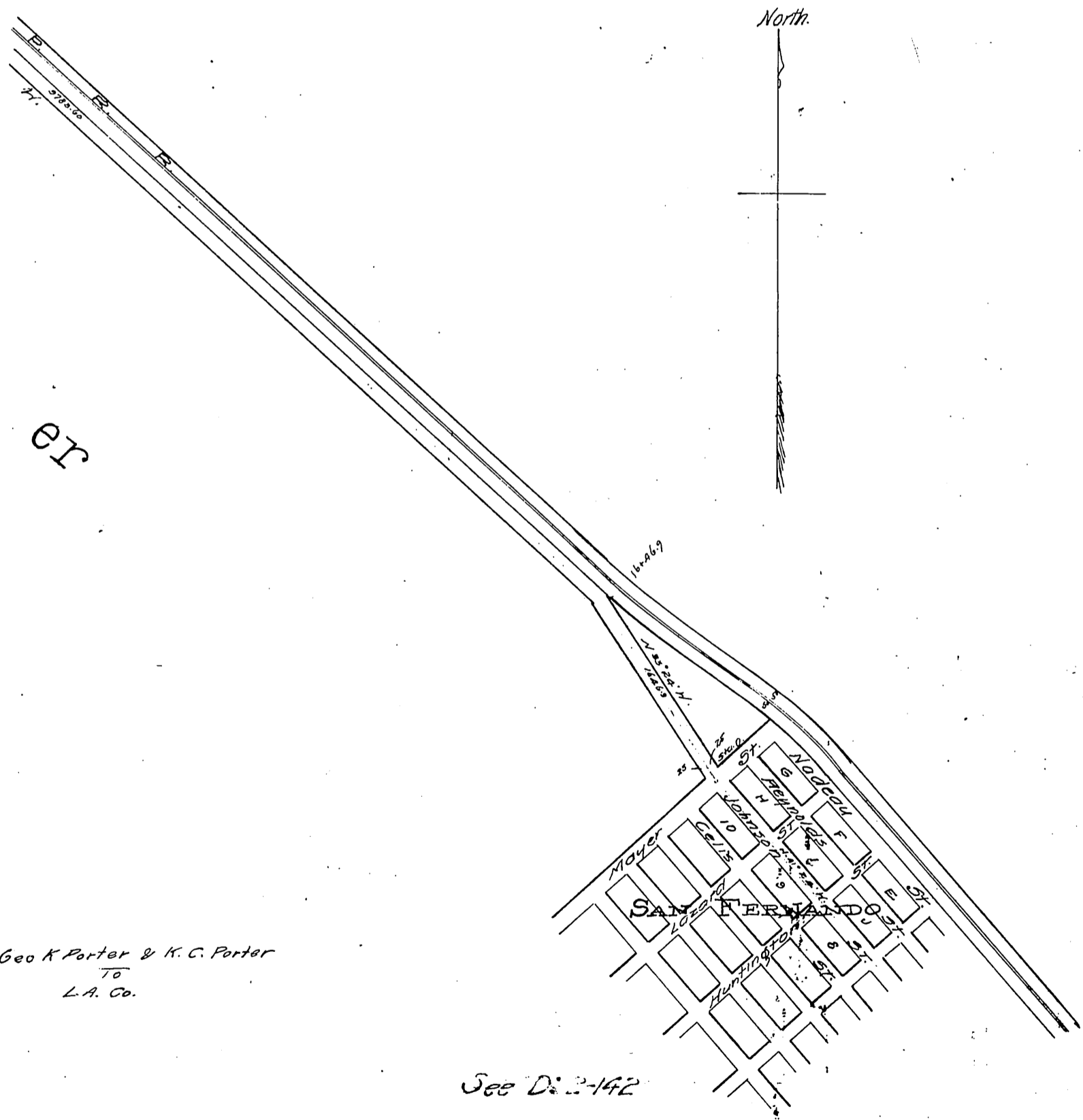
As surveyed under instructions from  
Hon. Board of Supervisors

Scale of all Roads 500ft - 1 in.  
Other scale 1000 ft. - 1 in.

In March 1896

E. T. Wright Co Sur.  
by H. B. Nicholson, Dep.

Road 50ft. Wide.



Geo K Porter & K. C. Porter  
To  
L.A. Co.

See D. 2-142

Recorded of request of County Clerk, May 22/96.