

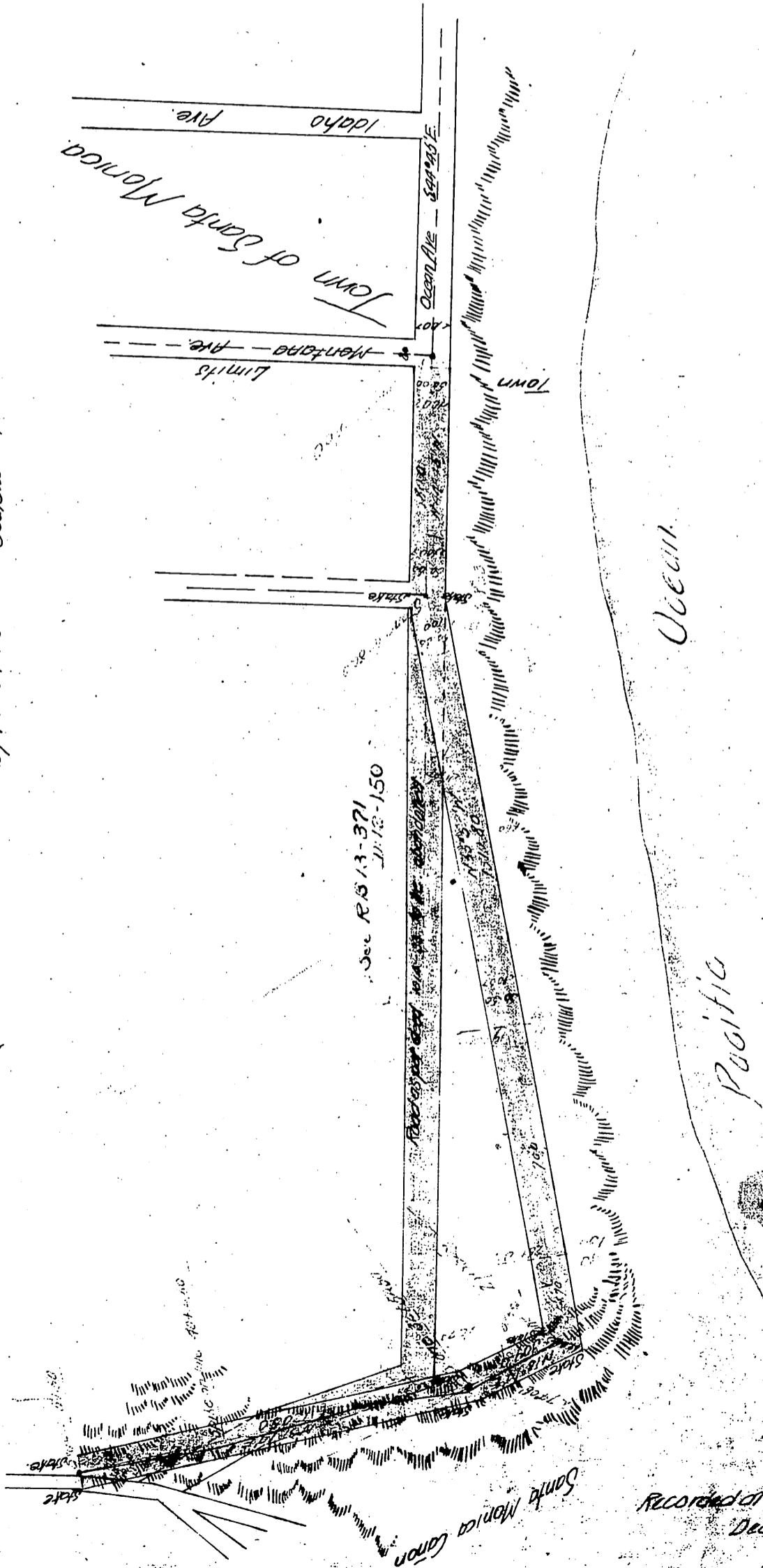
J.P. Jones to L.A. Co.
June 24-1897

Plat of
Ocean Ave., Extension
from Montana Ave. to Santa Monica Canon

showing re-location as per deed and old road to be abandoned

E.T. Wright Co. Sur. April, 1897

by T.H. James Scale 200' = 1"



See R.S. 13-371
July 12-1890

II:2-206
For Loc of part of
Road See Map No. 2
Ed. D. 12: 148 R. 15 13-24

Recorded at reg. of Co. Clerk
Dec 18, 1897