

Recorded  
July 12, 1897

Mary H. Banning

12  
Mand. E. R. de Sepulveda

Mand. E. R. de Sepulveda

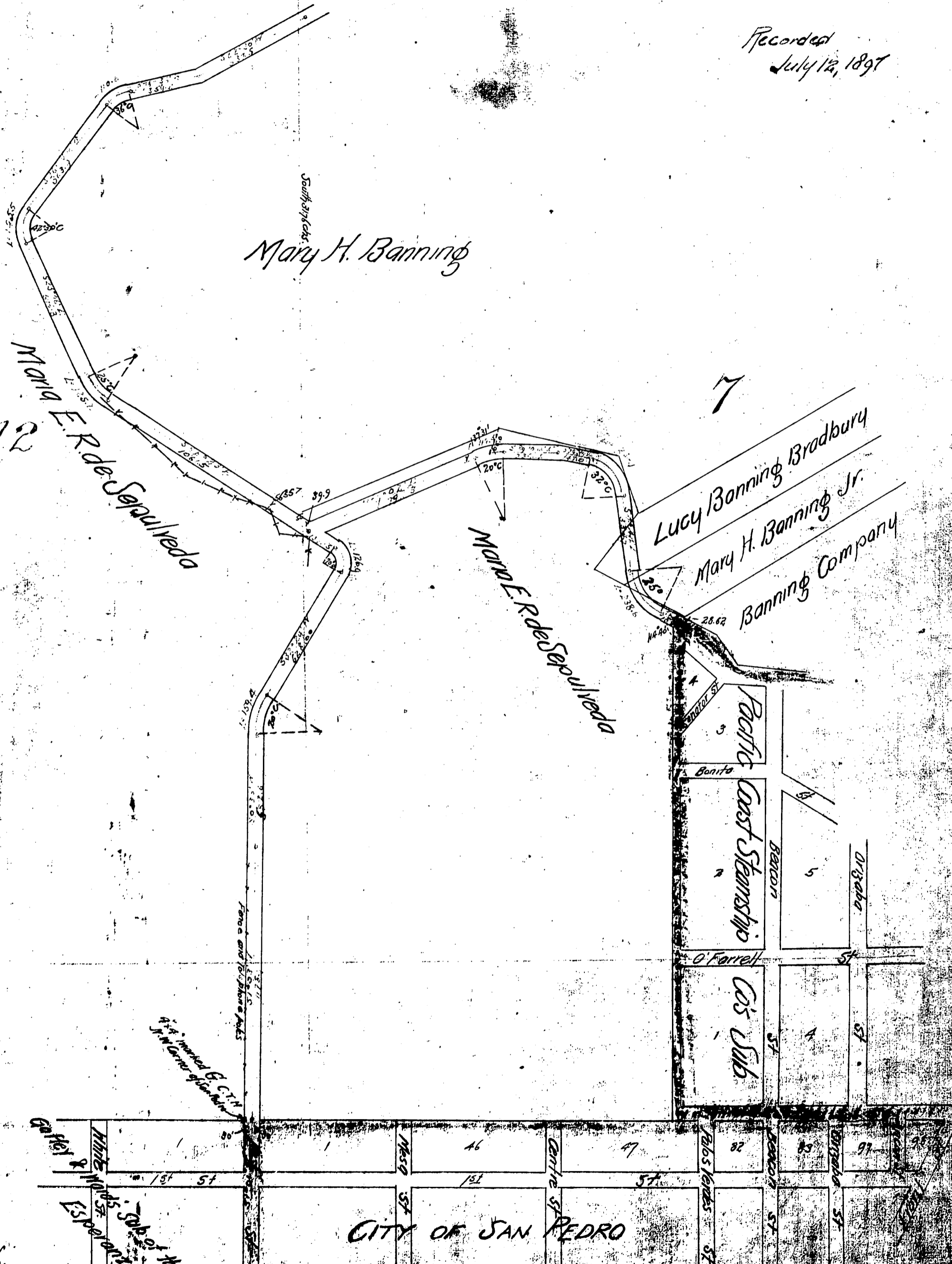
Lucy Banning Bradbury  
Mary H. Banning Jr.  
Banning Company

Pacific  
Coast Steamship  
Cos Sub

CITY OF SAN PEDRO

D:1180-12

DM 1180-12



1/2 in. Mand. E. R. de Sepulveda  
1/2 in. Mand. E. R. de Sepulveda

White St  
Mesa St  
Centre St  
Rios Juntas St  
Beacon St  
Orizaba St  
Gardner St