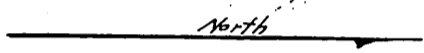
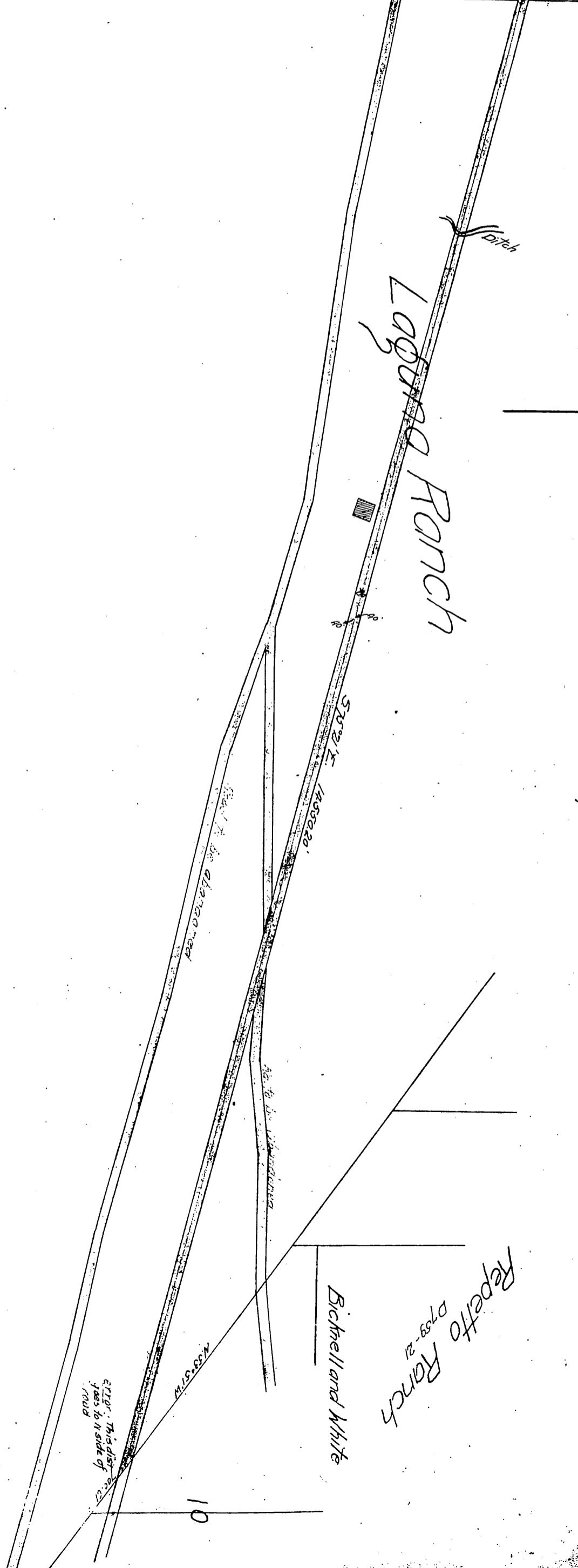
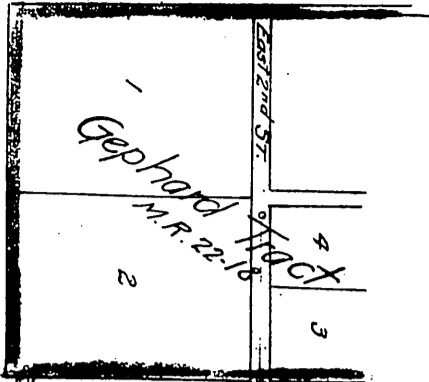


DM 1202-318

5



Arcadia B. de Baker
to
L. A. County.

Part of
Whittier Road
Scale 1000 = 1"

Repetto Ranch
D 759-21

Bicknell and White

- 117 B 237
- 117 B 241
- 120 B 233
- 120 B 237

Recorded Feb 8-18 8
at request of Coun., Clerk.

D-1202