

DM 1226-84
34

T-60

Area of Tract In red = $6 \frac{68}{100}$ Ac.
Yellow = $23 \frac{66}{100}$ Ac.
Total Area = $30 \frac{34}{100}$ Ac.

Scale: One inch = 200 feet

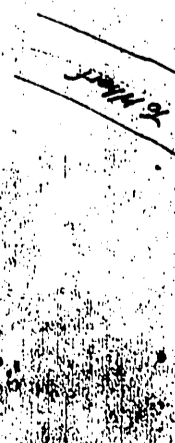
Recorded March 18 1898
Santa Monica Land and Water Co.
To
S. P. R. R.

Bay of Santa Monica

Line of High water of Santa Monica Bay and South boundary of Rancho Boca de Santa Monica 3000 ±
6.68 Ac. ±
General line of S. P. R. R.

23.66 Ac.

Rancho Boca de Santa Monica



Santa Monica
High Water