

Recorded Mar 27 1898

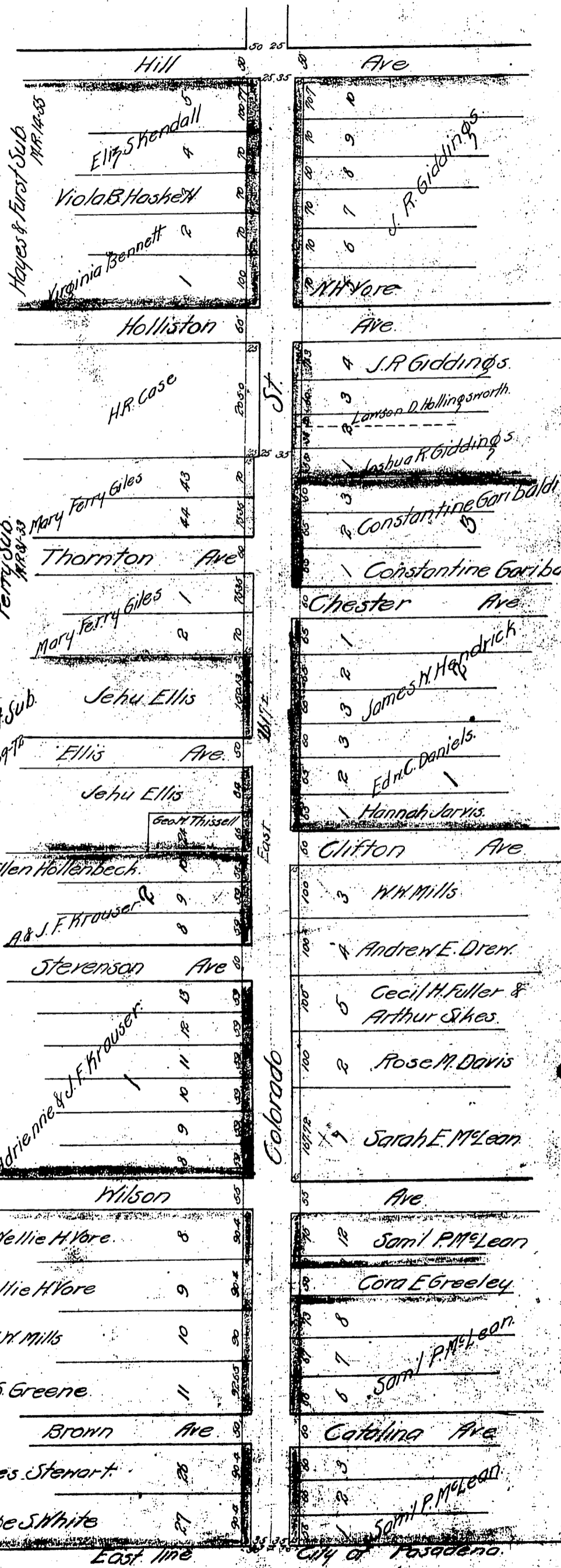
J. Francis Krauser, Adrienne Krauser, Nellie H. Vore, Elizabeth P. Mills, Martha White, Alice Gordon White, George Stora White, Sarah E. McLean, Samuel P. McLean, Cora E. Greeley, Ellen Hollenbeck, Hannah Jarvis, Victor Marsh, Annie H. Marsh, Edward Groenendyke, Geo N. Thissell per F.P. Boynton, George W. Stinson

to Los Angeles County

DM 1230-18

37

Colorado Street Widening
Scale 200'-1"



J. Ellis Colorado St. Sub
M.R. 39-78

Stevenson & Rhodes
Sub M.R. 13-76

Hull Tract
M.R. 1291

Hayes & Furst Sub
M.R. 14-83

Ferry Sub
M.R. 8-33

J.R. Giddings Sub
M.R. 1573

Chester Tract
M.R. 14-84

M.R. 4-325

Sam'l P. McLean Sub
M.R. 59-59

So. Cal. Sur. Map 3419

Index #8