

Scale 200'-1"

J.H. Burke
Silas B. Root
Hyacinthe Sarrasin
Mat Tyler per M.F. Tyler heirs
to
Los Angeles County
Recorded July 12-1898.
D: 2-228

North

Rivera M.F. 28-31

MAIN ST.

16

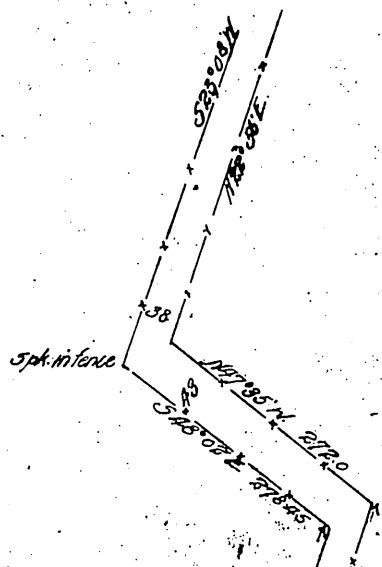
BURKE ST.

17

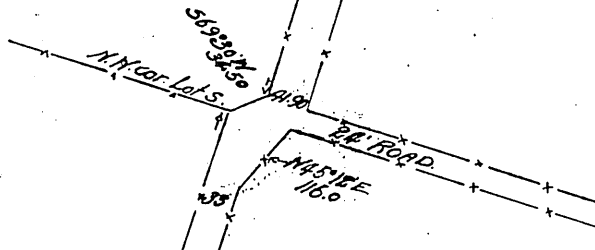
DIAZ ST.

Jos. Burke

Arthur A. Waite



Osburn Burke



Hyacinth Sarrasin

Silas B. Root

James Stewart

Rubiah English

Road named Passons Blvd. D: 49-23 R.B. 35-306

TELEGRAPH ROAD

D: 1245-9