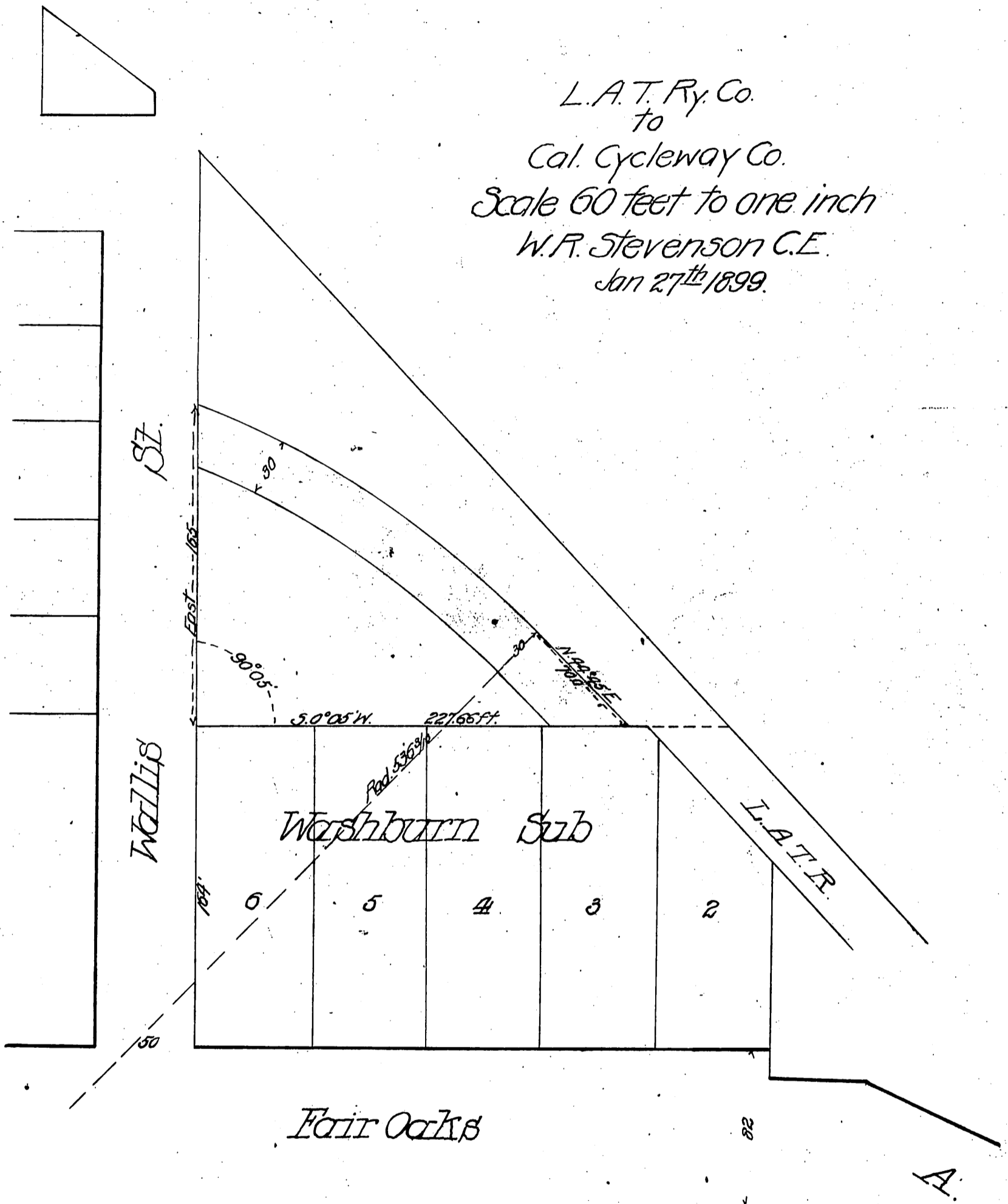


L.A.T. Ry. Co.
to
Cal. Cycleway Co.
Scale 60 feet to one inch
W.R. Stevenson C.E.
Jan 27th 1899.



Por of 30' strip deeded for St D: 4086-196 D: 15-232

Recorded Feb. 1-1899

Por. Lot 12 Blk. N San Pasqual Tr. (M.R. 92-91) to City of Pas.	D: 38-13 O.R. 2872-130
Por. 5 1/2 Wallis St. (Vbc. Ord. 1145)	D: 38-13 O.R. 2872-130
Por. Lots 1, 2, & 3 Washburn Sub. (M.R. 6-242)	D: 38-13 O.R. 2872-130