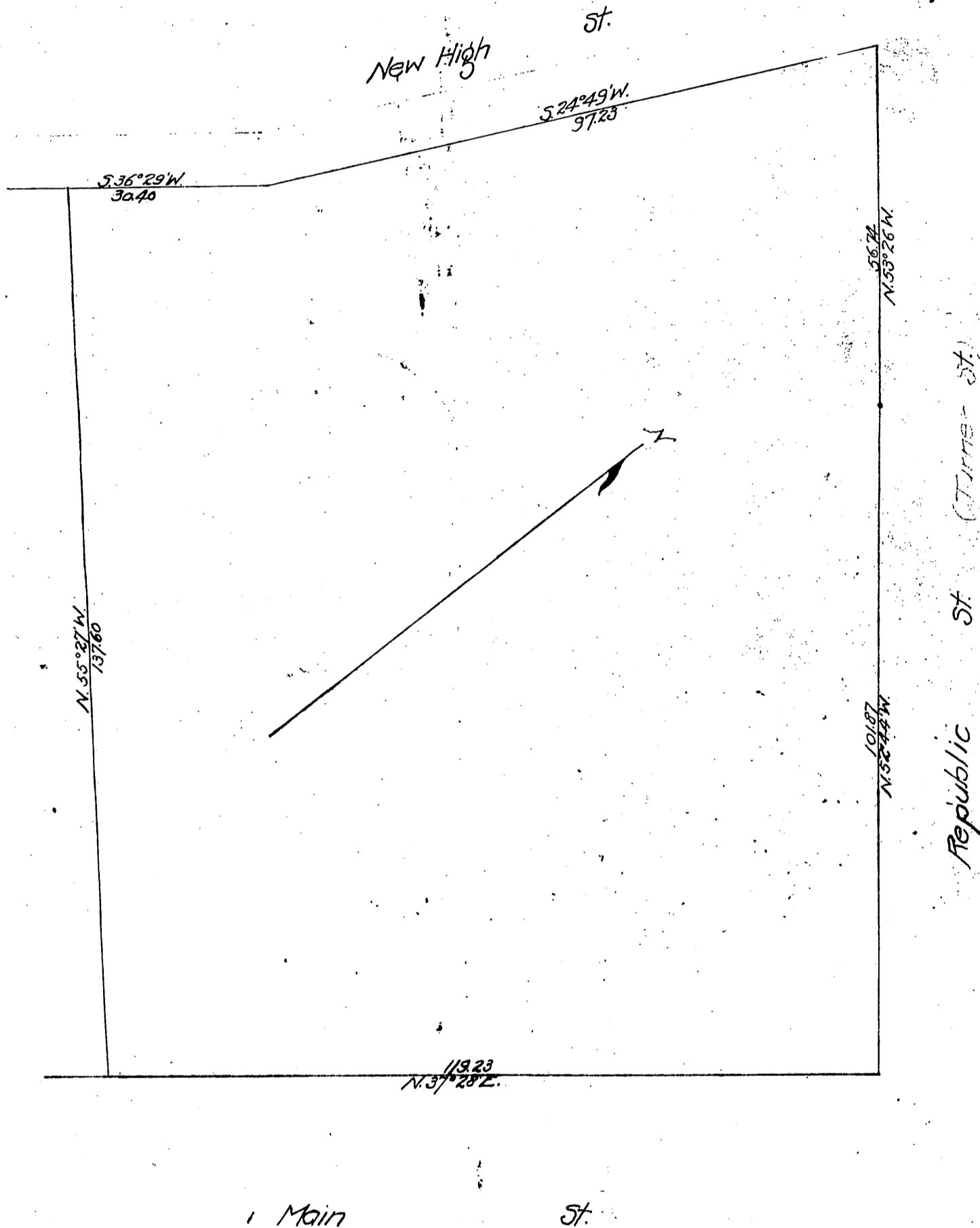


Property involved in Superior Court Case No. 30023  
 W.H. Baker & H.W. Chase  
 vs.  
 J.W. Hellman, et al  
 Located Jan 8, 1899 for L.D.C. Gray  
 By Wright & Nicholson.  
 Scale 20ft.



Recorded Mar. 14-1899 at request of  
 Graves, O'Melveny and Shankland.