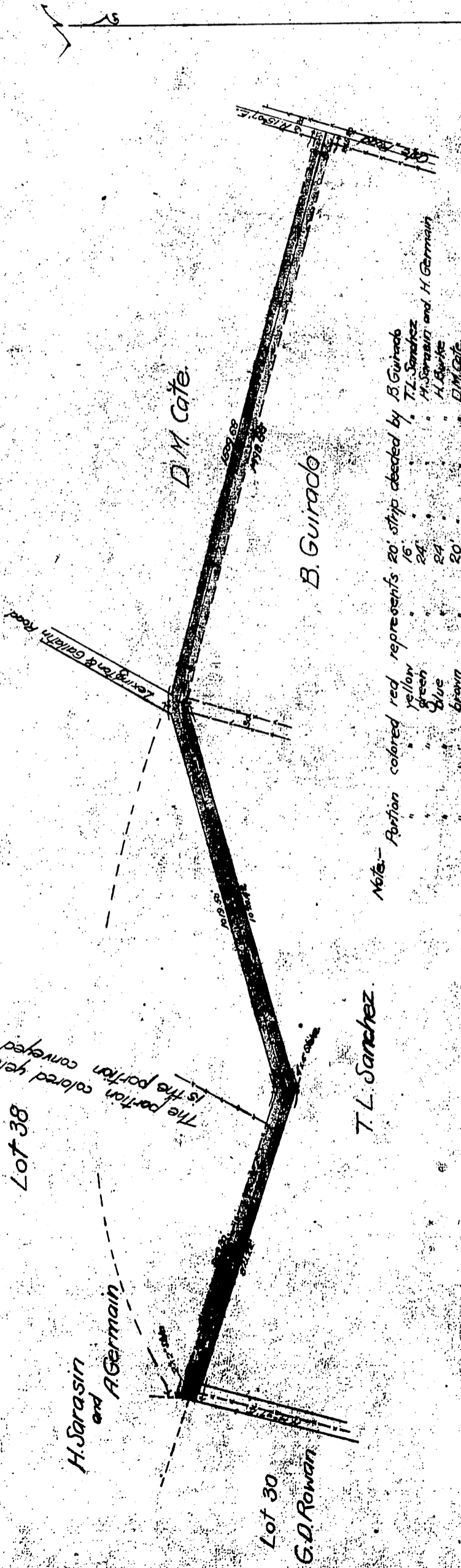


H. Sarrasin et al  
to  
L.A. County.



Note:— Portion colored red represents 20' strip deeded by B. Guirado  
 yellow " " " " T.L. Sanchez  
 green " " " " H. Sarrasin and H. Germain  
 blue " " " " A. Burke  
 brown " " " " D.M. Cate

Scale 300' = 1"  
 Surveyed May 28-1899  
 by J.H. Smith - Co. Sur.

Recorded Dec 8-1899  
 at request of Grantee