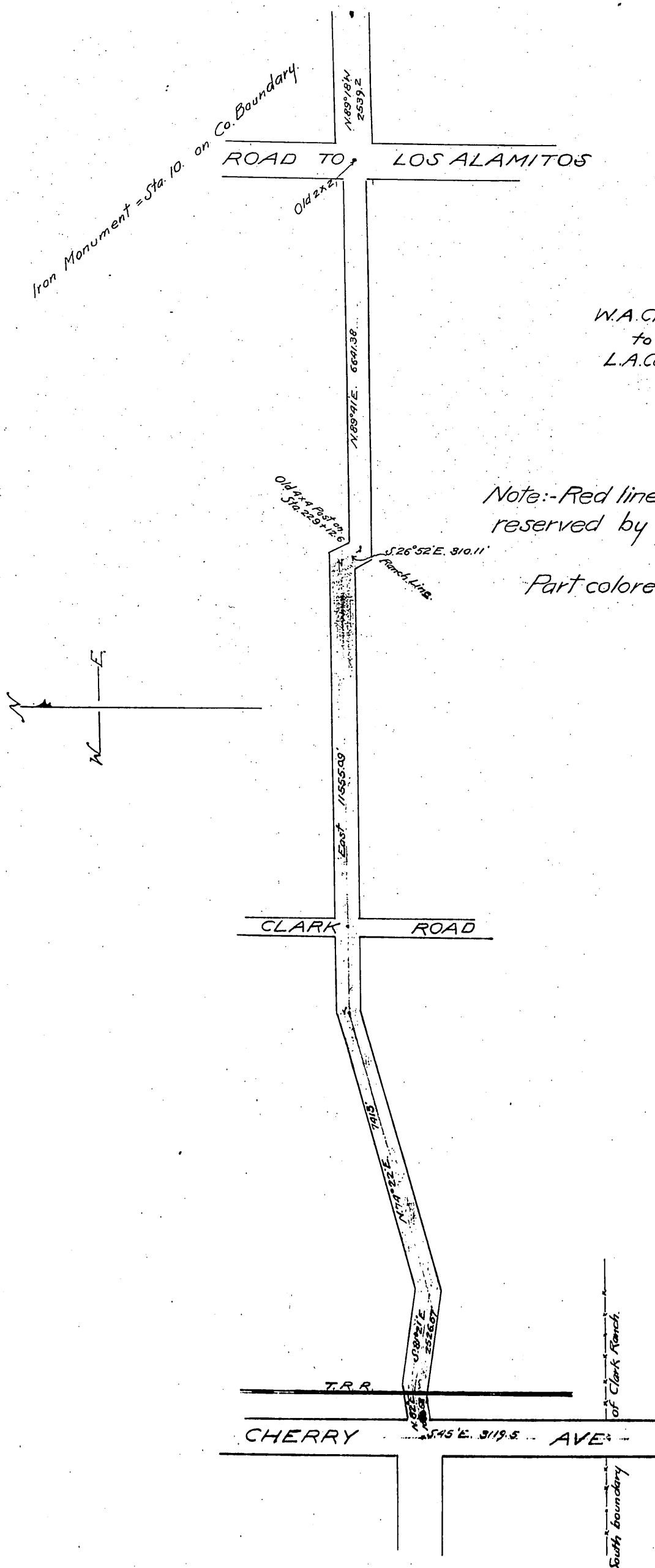


Bixby Station Road
Scale for length 2000'=1" for width 200'=1"



W.A. Clark
to
L.A. County.

Note:- Red lines show strip 60' wide reserved by Stearns Ro. Co.
Part colored brown - deeded.

Vac. por. Bixby Station Road - D: 46-242 O.R. 12139-372

Recorded May 17-1900.

D: 2-266

Por. Bixby Station Rd. changed to Carson St. - D: 49-113.
Vac. por. Carson St. D: 46-183 O.R. 10628-272
Vac. Bixby Station Rd. across U.P. R/W - D: 46-237 O.R. 12125-15
Sht. 30+31 A-132 8x14